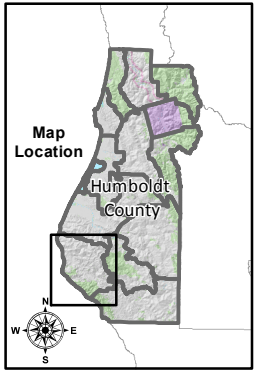
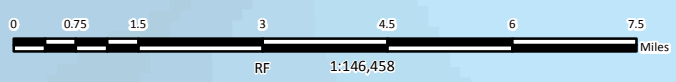
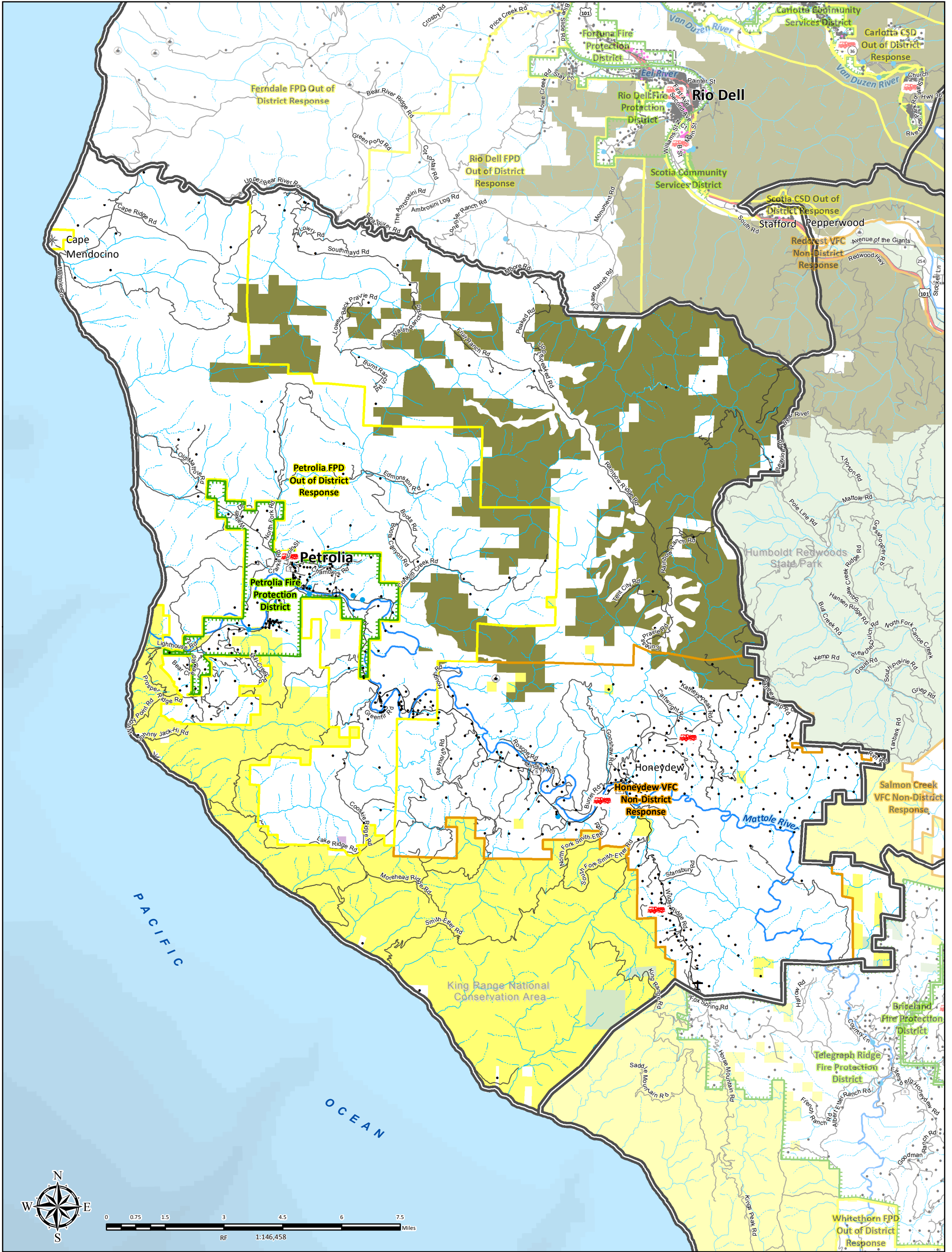


MAP 4.12.1 MATTOLE-LOST COAST PLANNING UNIT



PLANNING UNIT MAP

<ul style="list-style-type: none"> CWPP Planning Unit Boundary Emergency Response <ul style="list-style-type: none"> Local Fire Station CAL Fire Station Six Rivers Fire Station Hospitals and Clinics <ul style="list-style-type: none"> Hospital/Medical Center Red Cross Lookouts, Lights and Radio <ul style="list-style-type: none"> Lighthouse School 	<ul style="list-style-type: none"> District Out of District Non-Tax (Volunteer Fire Company (VFC)) Proposed Annexation Area Improved Parcels <ul style="list-style-type: none"> Improved Parcel (not actual location) Commercial or Industrial Lot (not actual location) Airports <ul style="list-style-type: none"> Landing Strip 	<ul style="list-style-type: none"> HWY 101 State HWY HWY or Secondary Road Local Road or Street Hydrography <ul style="list-style-type: none"> Major River or Stream Infrastructure <ul style="list-style-type: none"> Gauging Station Water Tank or Source Historic Locations 	<ul style="list-style-type: none"> Bureau of Land Management National Park Service State Park or Other State Lands Six Rivers National Forest U.S. Fish and Wildlife Service Tribal Lands Private Industrial Timber Cities
--	--	--	--

FireSafe COUNCIL

COUNTY OF HUMBOLDT
The Home of the Redwoods

Land ownership and infrastructure data was compiled by the County of Humboldt. Fire planning features identified at community workshops by residents; local, state, and federal fire service and prevention partners; and Humboldt County staff. Other data sources include the 2006 and 2013 editions of the Humboldt County Community Wildfire Protection Plan. The map is intended for planning purposes and should not be used for precise measurement or navigation.
Map compiled by County of Humboldt, July 2018.
For online maps and fire planning feature details, visit: https://webgis.co.humboldt.ca.us/HCEGIS2.6_CWPP
Contact: cimmit@co.humboldt.ca.us or jvondohlen@co.humboldt.ca.us