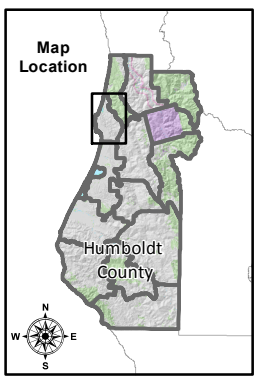
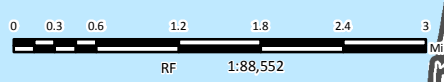
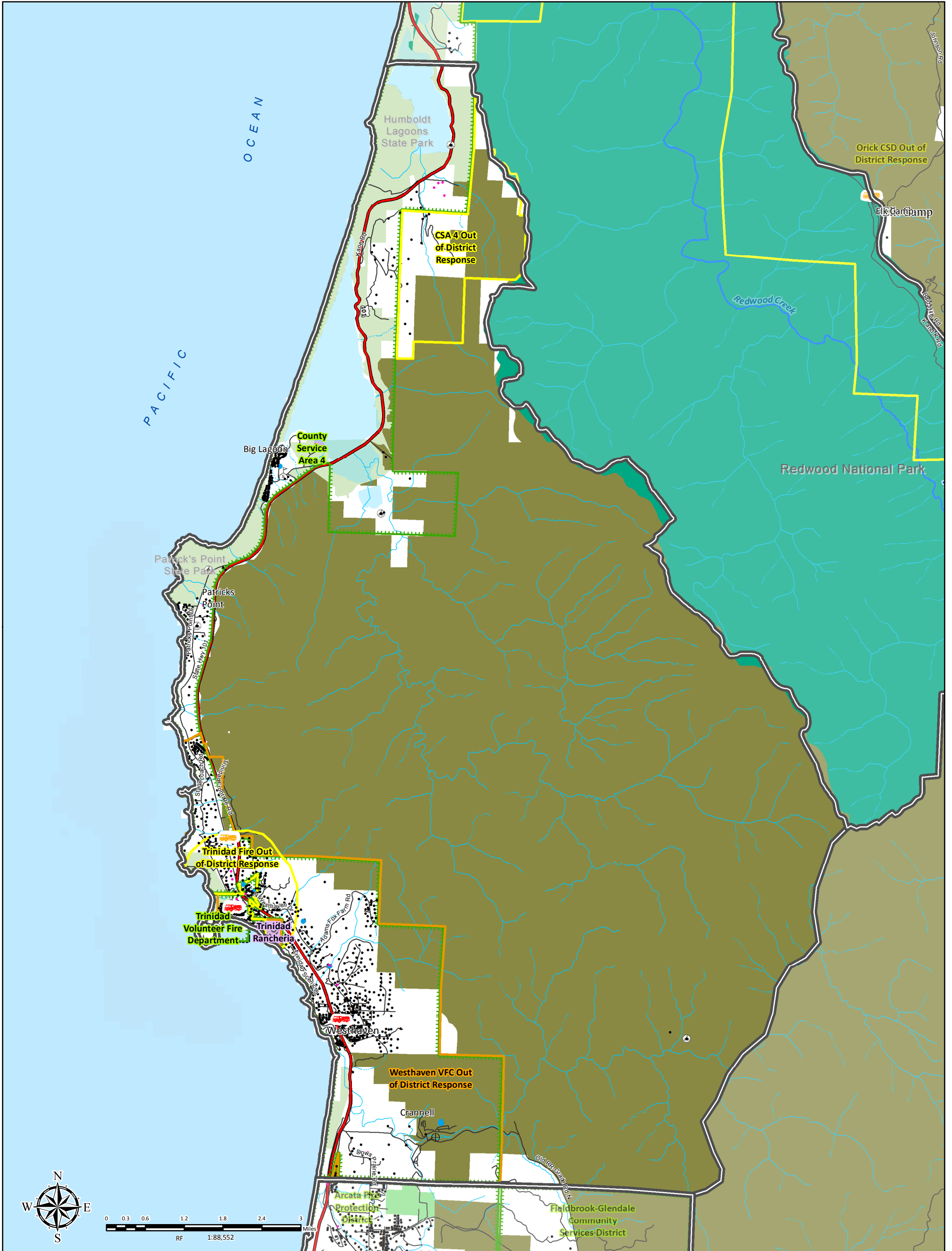


# MAP 4.5.1 TRINIDAD PLANNING UNIT



## PLANNING UNIT MAP

|  |  |   |   |
|--|--|---|---|
| <p><b>Emergency Response</b></p> <ul style="list-style-type: none"> <li> Local Fire Station</li> <li> CAL Fire Station</li> <li> Six Rivers Fire Station</li> </ul> <p><b>Hospitals and Clinics</b></p> <ul style="list-style-type: none"> <li> Hospital/Medical Center</li> <li> Red Cross</li> </ul> <p><b>Lookouts, Lights and Radio</b></p> <ul style="list-style-type: none"> <li> Lighthouse</li> <li> School</li> </ul> | <p><b>Local Fire Organization Response Area</b></p> <ul style="list-style-type: none"> <li> District</li> <li> Out of District</li> <li> Non-Tax (Volunteer Fire Company (VFC))</li> <li> Proposed Annexation Area</li> </ul> <p><b>Improved Parcels</b></p> <ul style="list-style-type: none"> <li> Improved Parcel (not actual location)</li> <li> Commercial or Industrial Lot (not actual location)</li> </ul> <p><b>Airports</b></p> <ul style="list-style-type: none"> <li> Landing Strip</li> </ul> | <p><b>Highways and Roads</b></p> <ul style="list-style-type: none"> <li> HWY 101</li> <li> State HWY</li> <li> HWY or Secondary Road</li> <li> Local Road or Street</li> </ul> <p><b>Hydrography</b></p> <ul style="list-style-type: none"> <li> Major River or Stream</li> </ul> <p><b>Infrastructure</b></p> <ul style="list-style-type: none"> <li> Gauging Station</li> <li> Water Tank or Source</li> <li> Historic Locations</li> </ul> | <p><b>Land Ownership</b></p> <ul style="list-style-type: none"> <li> Bureau of Land Management</li> <li> National Park Service</li> <li> State Park or Other State Lands</li> <li> Six Rivers National Forest</li> <li> U.S. Fish and Wildlife Service</li> <li> Tribal Lands</li> <li> Private</li> <li> Industrial Timber</li> <li> Cities</li> </ul> |
|--|--|---|---|



Land ownership and infrastructure data was compiled by the County of Humboldt. Fire planning features identified at community workshops by residents; local, state, and federal fire service and prevention partners; and Humboldt County staff. Other data sources include the 2006 and 2013 editions of the Humboldt County Community Wildfire Protection Plan. The map is intended for planning purposes and should not be used for precise measurement or navigation.

Map compiled by County of Humboldt, July 2018.  
 For online maps and fire planning feature details, visit:  
[https://webgis.co.humboldt.ca.us/HCEGIS2.6\\_CWPP](https://webgis.co.humboldt.ca.us/HCEGIS2.6_CWPP)  
 Contact: [cimmit@co.humboldt.ca.us](mailto:cimmit@co.humboldt.ca.us) or [jvondohlen@co.humboldt.ca.us](mailto:jvondohlen@co.humboldt.ca.us)