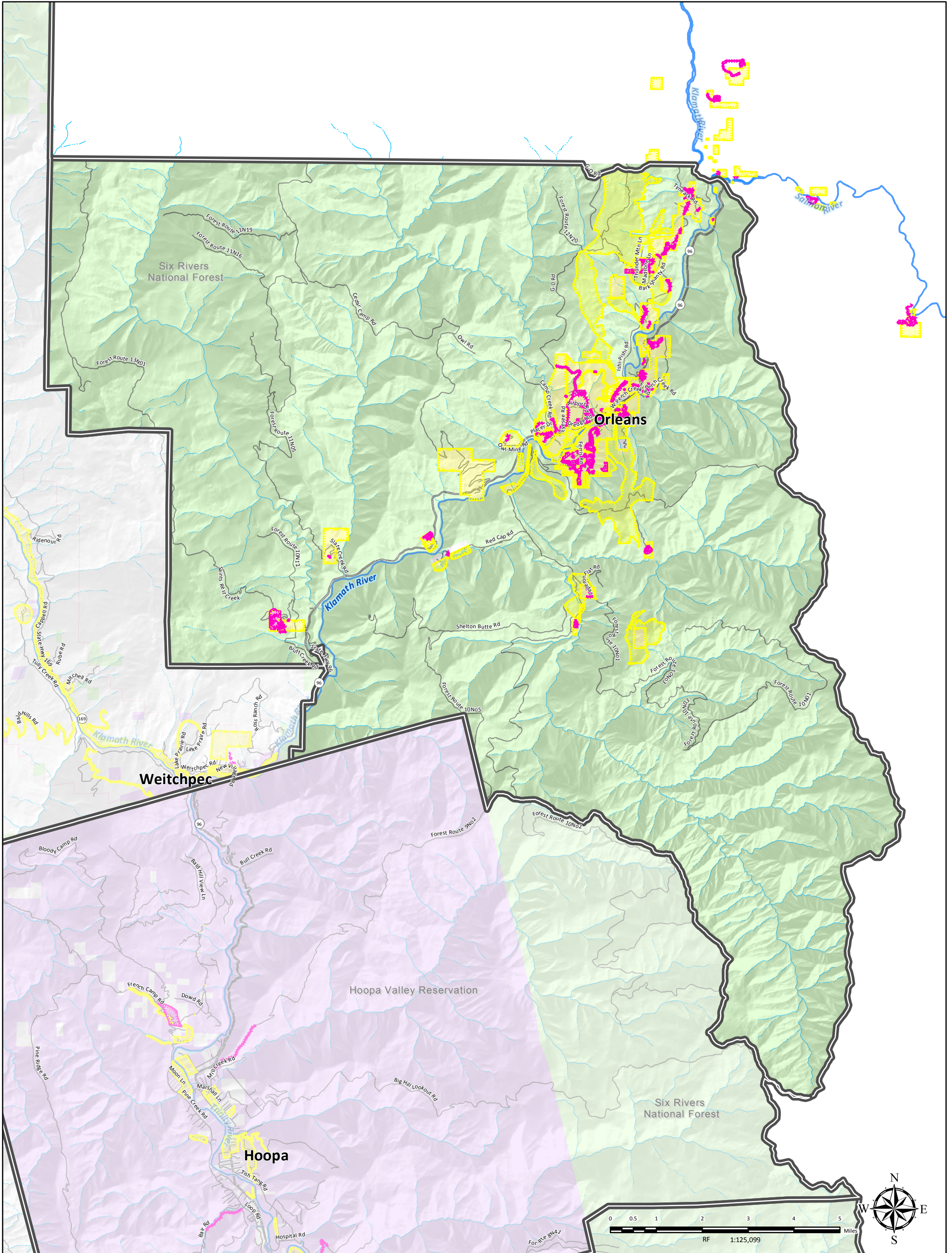


MAP 4.3.3 MID KLAMATH PLANNING UNIT



COMMUNITY-IDENTIFIED PROJECTS

- | | | | |
|--|-----------------------|---------------------------|-----------------------|
| CWPP Planning Unit Boundary | Land Ownership | Highways and Roads | Hydrography |
| Community-Identified Features | Public Land | HWY 101 | Major River or Stream |
| Proposed Project | Tribal Land | State HWY | Perennial Stream |
| Treated Project | Cities | HWY or Secondary Road | Intermittent Stream |
| In order to be effective, all Treated Projects will require continual maintenance. | | Local Road or Street | |

Land ownership and infrastructure data was compiled by the County of Humboldt. Fire planning features identified at community workshops by residents; local, state, and federal fire service and prevention partners; and Humboldt County staff. Other data sources include the 2006 and 2013 editions of the Humboldt County Community Wildfire Protection Plan. The map is intended for planning purposes and should not be used for precise measurement or navigation. Map compiled by County of Humboldt, November 2018. For online maps and fire planning feature details, visit: https://webgis.co.humboldt.ca.us/HCEGIS2.6_CWPP Contact: cimmit@co.humboldt.ca.us or jvondohlen@co.humboldt.ca.us

