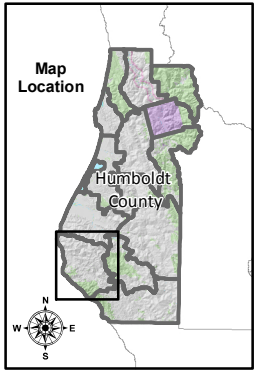
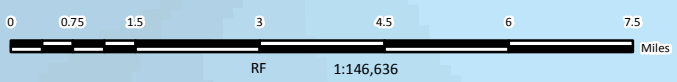
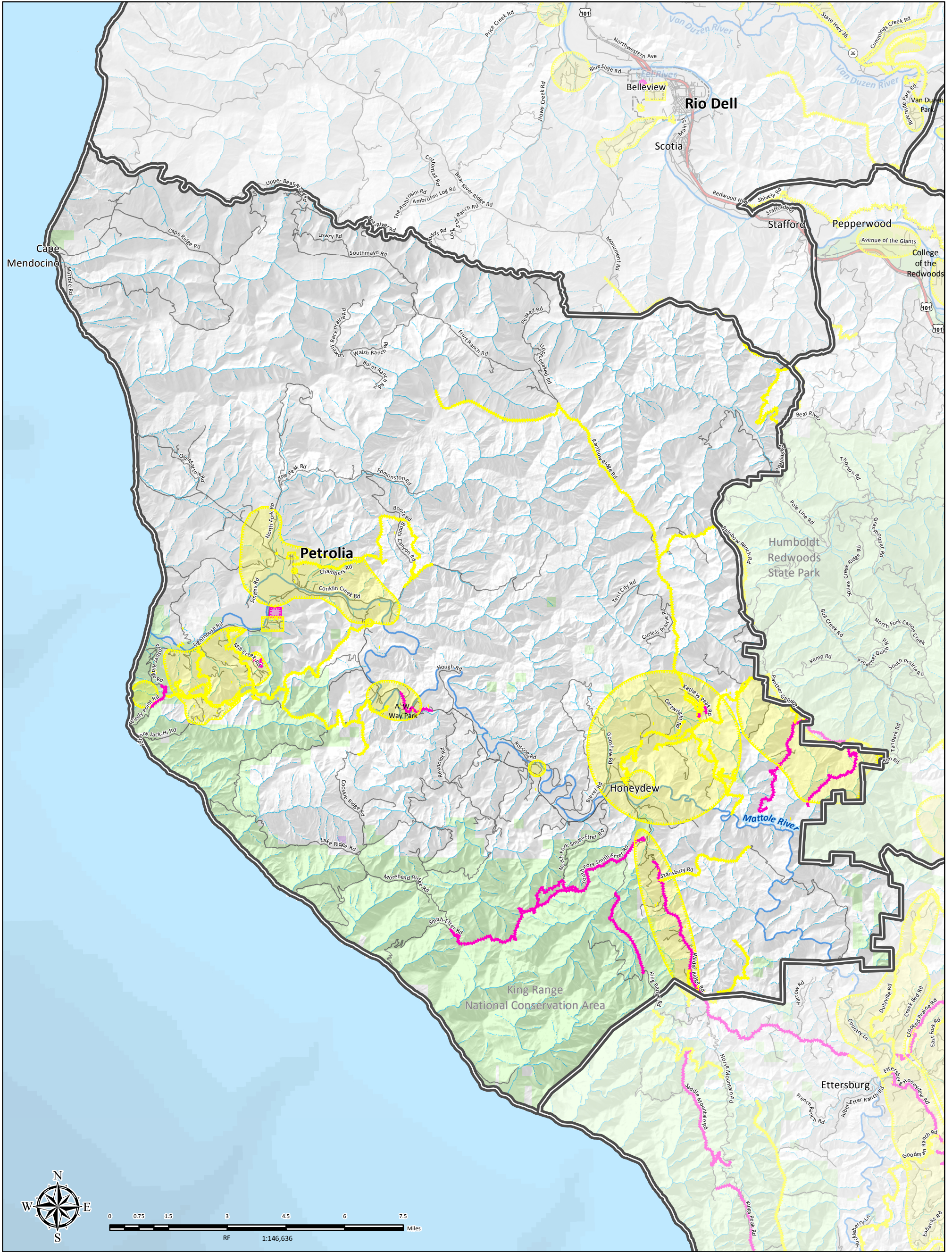


MAP 4.12.3 MATTOLE-LOST COAST PLANNING UNIT



COMMUNITY-IDENTIFIED PROJECTS

- | | | | |
|--|---------------------------|-----------------------|----------------|
| CWPP Planning Unit Boundary | Highways and Roads | Hydrography | Land Ownership |
| Community-Identified Features | HWY 101 | Major River or Stream | Public Land |
| Project | State HWY | Perennial Stream | Tribal Land |
| Treated Project | HWY or Secondary Road | Intermittent Stream | |
| In order to be effective, all Treated Projects will require continual maintenance. | Local Road or Street | Cities | |



Land ownership and infrastructure data was compiled by the County of Humboldt. Fire planning features identified at community workshops by residents; local, state, and federal fire service and prevention partners; and Humboldt County staff. Other data sources include the 2006 and 2013 editions of the Humboldt County Community Wildfire Protection Plan. The map is intended for planning purposes and should not be used for precise measurement or navigation. Map compiled by County of Humboldt, July 2018. For online maps and fire planning feature details, visit: https://webgis.co.humboldt.ca.us/HCEGIS2.6_CWPP Contact: cimmit@co.humboldt.ca.us or jvondohlen@co.humboldt.ca.us