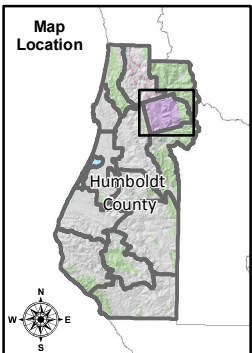
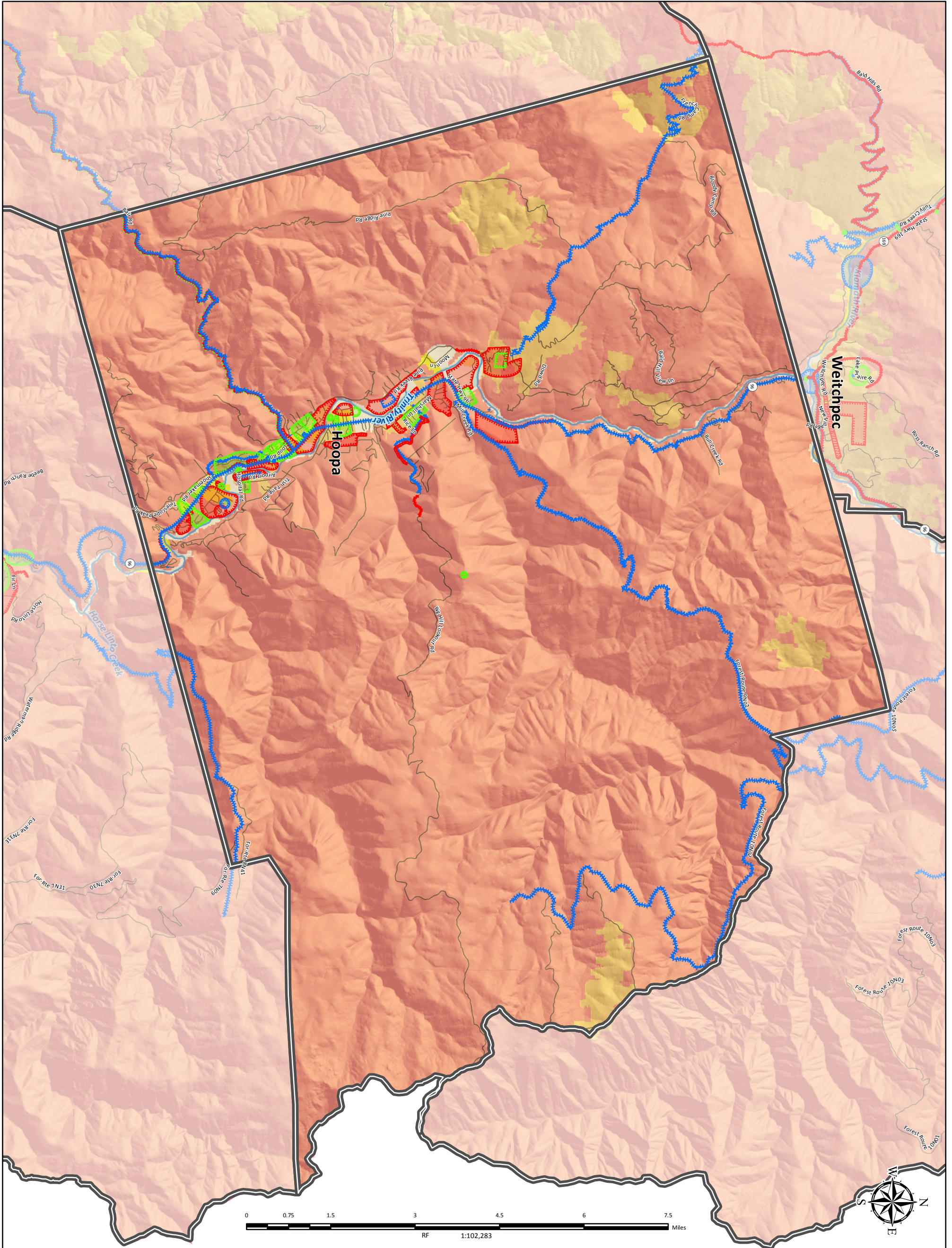


MAP 4.4.2 HOOPA PLANNING UNIT



COMMUNITY-IDENTIFIED PROTECTION RESOURCES, VALUES/ASSETS, & RISKS/HAZARDS

- | | | | |
|--------------------------------------|-----------------------------------|---------------------------|-----------------------|
| CWPP Planning Unit Boundary | Fire Hazard Severity Zones | Highways and Roads | Hydrography |
| Community-Identified Features | Moderate | HWY 101 | Major River or Stream |
| Protection | High | State HWY | |
| Value/Asset | Very High | HWY or Secondary Road | |
| Risk/Hazard | Land Ownership | Local Road or Street | |
| | Cities | | |



Infrastructure data was compiled by the County of Humboldt. FHSZ data retrieved from CAL FIRE. Fire planning features identified at community workshops by residents; local, state, and federal fire service and prevention partners; and Humboldt County staff. Other data sources include the 2006 and 2013 editions of the Humboldt County Community Wildfire Protection Plan. The map is intended for planning purposes and should not be used for precise measurement or navigation.
Map compiled by County of Humboldt, July 2018.
For online maps and fire planning feature details, visit:
https://webgis.co.humboldt.ca.us/HCEGIS2.6_CWPP
Contact: cimmit@co.humboldt.ca.us or jvondohlen@co.humboldt.ca.us