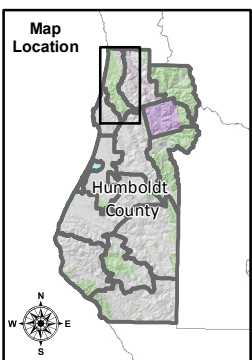
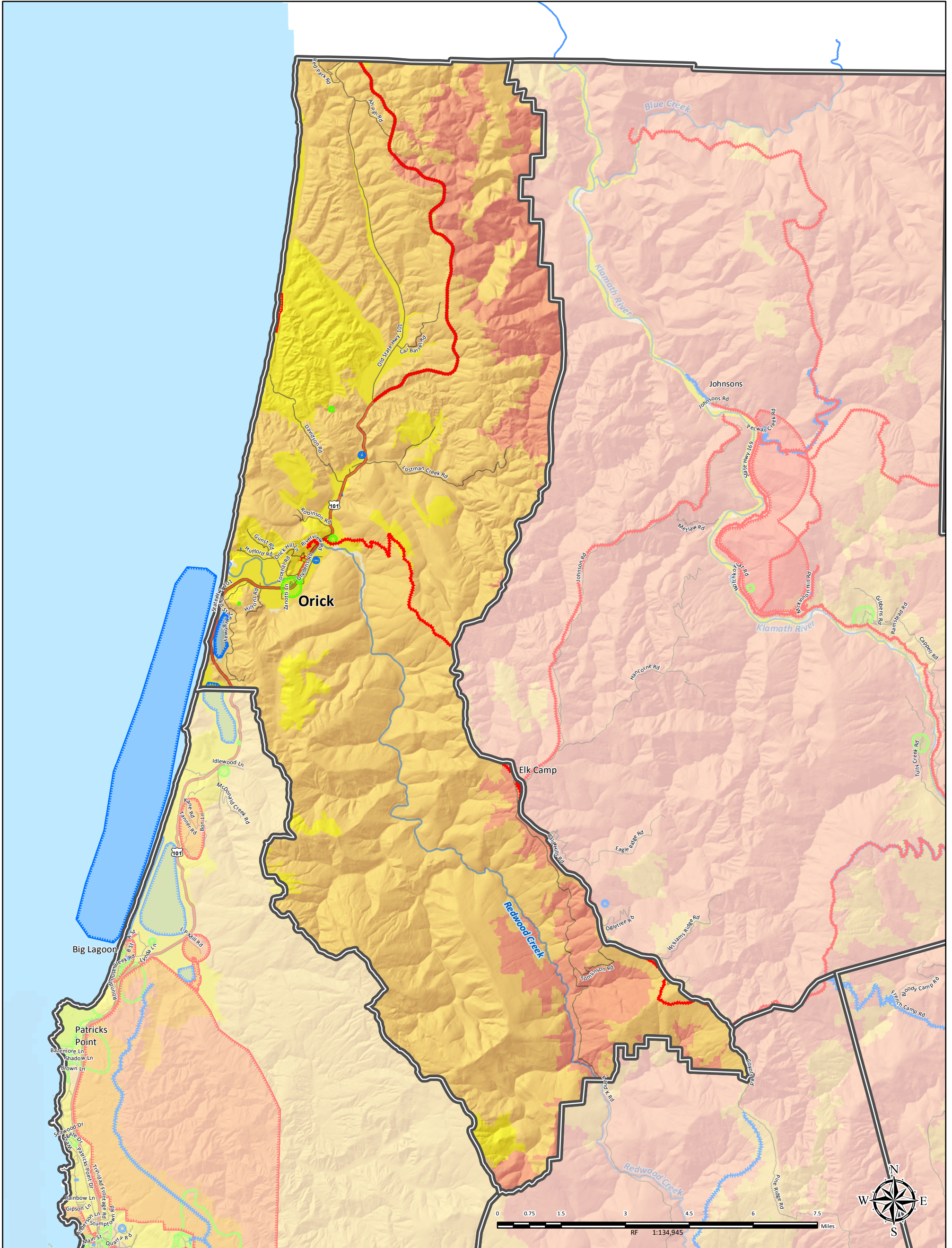


MAP 4.1.2 ORICK-REDWOOD PARK PLANNING UNIT



COMMUNITY-IDENTIFIED PROTECTION RESOURCES, VALUES/ASSETS, & RISKS/HAZARDS

- | | | | |
|--|---------------------------------------|-----------------------------|------------------------------------|
| CWPP Planning Unit Boundary | Fire Hazard Severity Zones: Moderate | Highways and Roads: HWY 101 | Hydrography: Major River or Stream |
| Community-Identified Features: Protection | Fire Hazard Severity Zones: High | State HWY | |
| Community-Identified Features: Value/Asset | Fire Hazard Severity Zones: Very High | HWY or Secondary Road | |
| Community-Identified Features: Risk/Hazard | Land Ownership: Cities | Local Road or Street | |



Infrastructure data was compiled by the County of Humboldt. FHSZ data retrieved from CAL FIRE. Fire planning features identified at community workshops by residents; local, state, and federal fire service and prevention partners; and Humboldt County staff. Other data sources include the 2006 and 2013 editions of the Humboldt County Community Wildfire Protection Plan. The map is intended for planning purposes and should not be used for precise measurement or navigation. Map compiled by County of Humboldt, November 2018. For online maps and fire planning feature details, visit: https://webgis.co.humboldt.ca.us/HCEGIS2.6_CWPP Contact: cimmit@co.humboldt.ca.us or jvondohlen@co.humboldt.ca.us