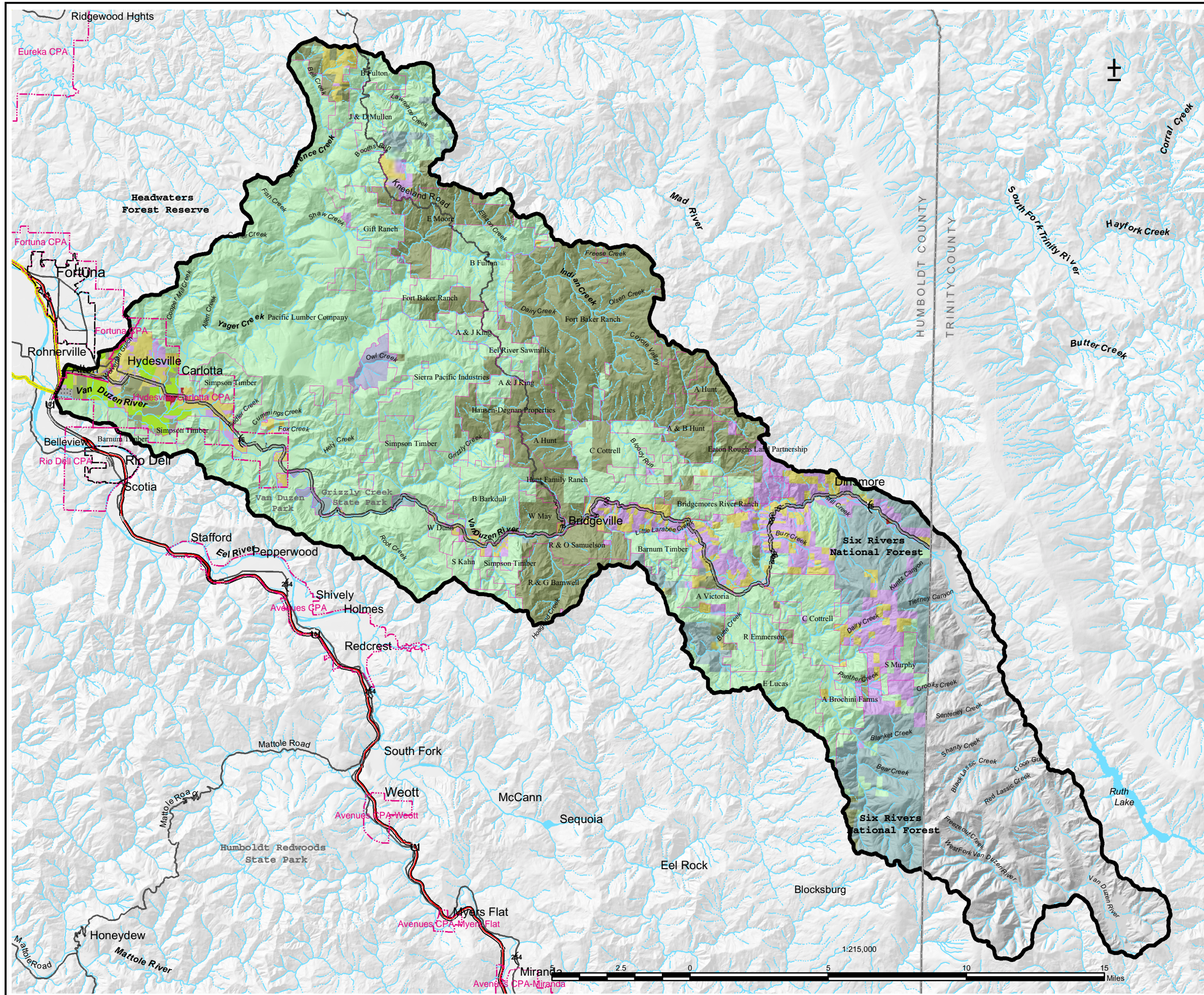


Fig. 7 Van Duzen Planning Watershed Existing Land Use and Land Ownership



Legend

- Planning Watershed
- County Boundary
- City Boundary
- timber production
- agriculture
- grazing/timber
- open space/parks
- tribal lands
- public
- rural residential
- multi family residential
- commercial
- vacant
- gravel mining
- landfill
- golf course
- other
- Community Planning Area
- Land Owners > 640 Acres
- Coastal Zone Boundary
- Highways and Roads**
- HWY 101
- US or State HWY
- HWY or Secondary Road
- Hydrography**
- Continuous Perennial
- Continuous Intermittent
- Subsurface



Note:
Land use and ownership are shown only for the watershed planning area in Humboldt County. Land use colors shown in legend do not exactly match colors on the map due to a transparency setting enabling display of terrain shading. Roads, places, and public lands are shown for Humboldt County only.

Data Sources:
Parcels, existing land use, and public lands are based on HCCDS digitized GIS parcel dataset and Land Information System (LIS) database, 2002.
Hydrography based on CDF's Fire Resource Assessment Project (FRAP) streams dataset downloaded from <http://frap.cdf.ca.gov/data/frapgisdata/select.asp>
Watershed Boundaries are based on CDF's Calwater dataset also obtained from FRAP.
Terrain relief is based on 10 Meter Digital Elevation Models from FRAP.
ArcMap File: humco c:\aprs\vanduzen2.mxd

This map intended for display purposes only and should not be used for precise measurement or navigation. Data has not been completely checked for accuracy.

Map produced by Humboldt County Community Development Services (HCCDS), June 2002.