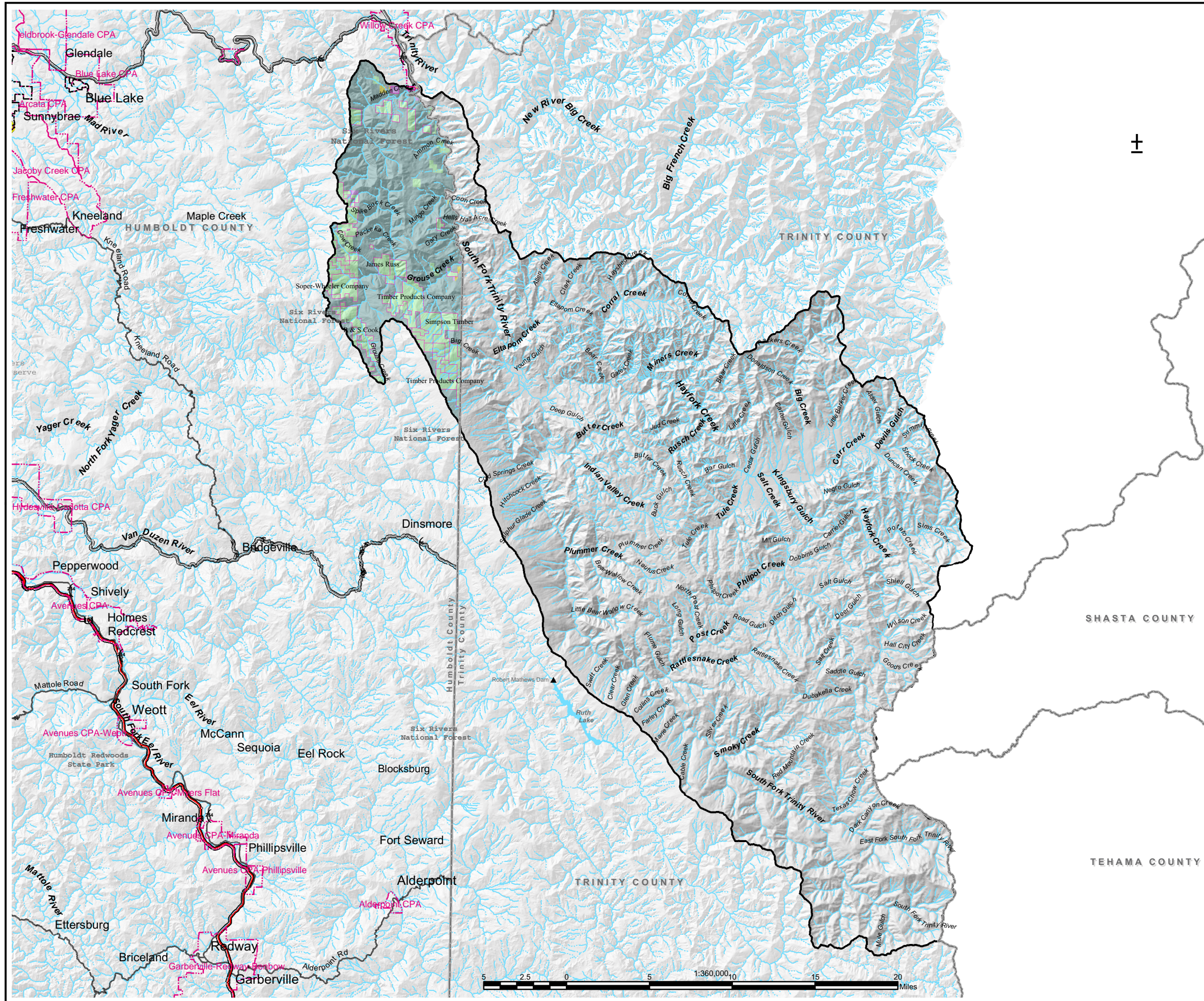


# Fig. 5 South Fork Trinity Planning Watershed

## Existing Land Use and Land Ownership



**Legend**

Planning Watershed	County Boundary
<b>Existing Land Use - 2002</b>	City Boundary
timber production	Community Planning Area
agriculture	Land Owners > 640 Acres
grazing/timber	Coastal Zone Boundary
open space/parks	<b>Highways and Roads</b>
tribal lands	HWY 101
public	US or State HWY
rural residential	HWY or Secondary Road
heavy industrial	<b>Hydrography</b>
light industrial	Continuous Perennial
single family residential	Continuous Intermittent
multi family residential	Subsurface
commercial	
vacant	
gravel mining	
landfill	
golf course	
other	



Humboldt County General Plan Update  
**HUMBOLDT 21st Century**

**Note:**  
 Land use and ownership are shown only for the watershed planning area in Humboldt County. Land use colors shown in legend do not exactly match colors on the map due to a transparency setting enabling display of terrain shading. Roads, places, and public lands are shown for Humboldt County only.

**Data Sources:**  
 Parcels, existing land use, and public lands are based on HCCDS digitized GIS parcel dataset and Land Information System (LIS) database, 2002.  
 Hydrography based on CDF's Fire Resource Assessment Project (FRAP) streams dataset downloaded from <http://frap.cdf.ca.gov/data/frapgisdata/select.asp>  
 Watershed Boundaries are based on CDF's Calwater dataset also obtained from FRAP.  
 Terrain relief is based on 10 Meter Digital Elevation Models from FRAP.

ArcMap File: humco c:\aprs\trinity2.mxd  
 This map intended for display purposes only and should not be used for precise measurement or navigation. Data has not been completely checked for accuracy.  
 Map produced by Humboldt County Community Development Services (HCCDS), June 2002.