

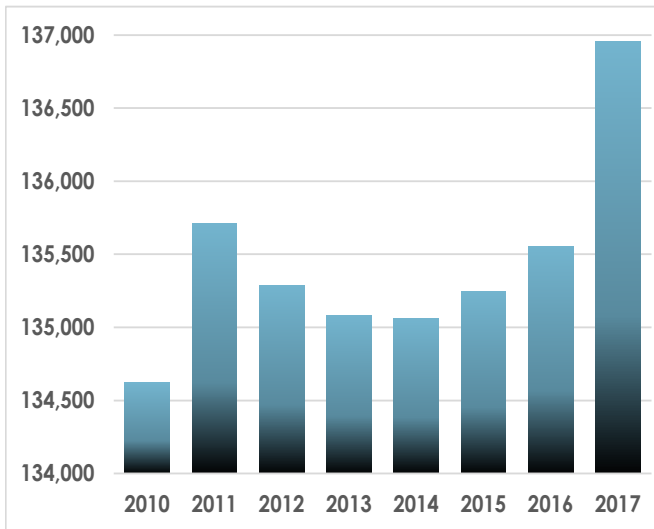
# HUMBOLDT COUNTY PROFILE



# Humboldt County Profile

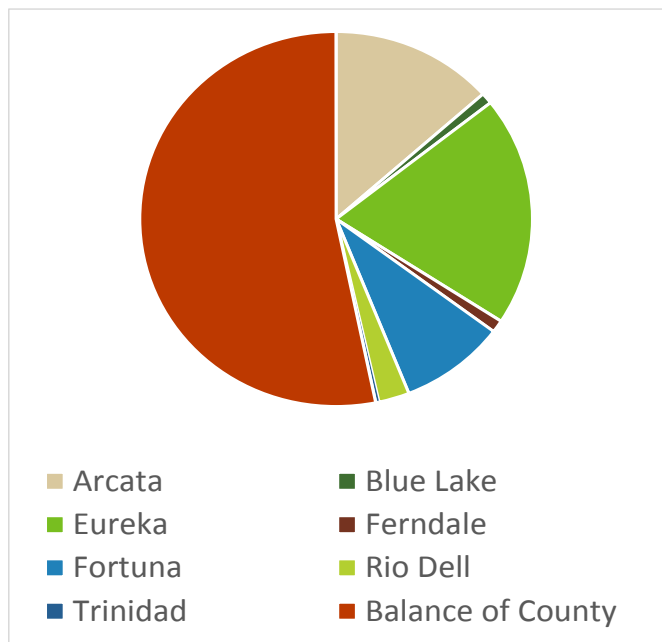
## DEMOGRAPHICS

### Humboldt County Total Population

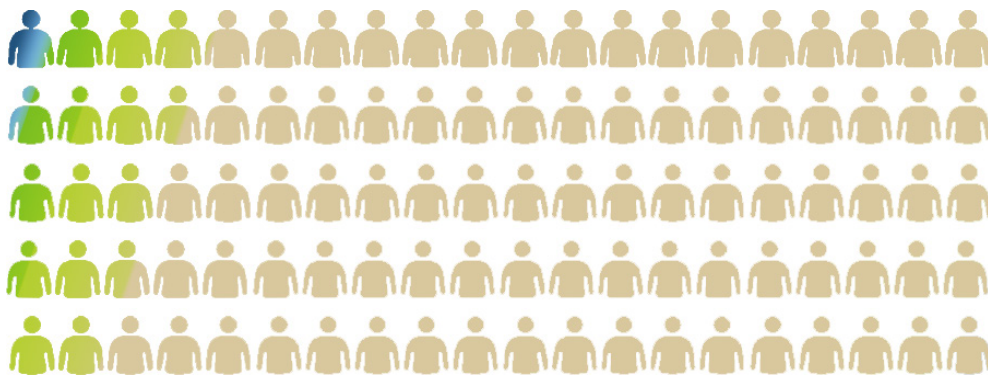


Source: California Department of Finance Demographic Research Unit; Report E-4 Populations Estimates for Cities, Counties and the State 2011-2017.

### 2017 Population % by Area



### Population by Race



- 81% White
- 11% Hispanic\*
- 5% Native American
- 3% Asian
- 1% African American
- 6% Other or Mixed

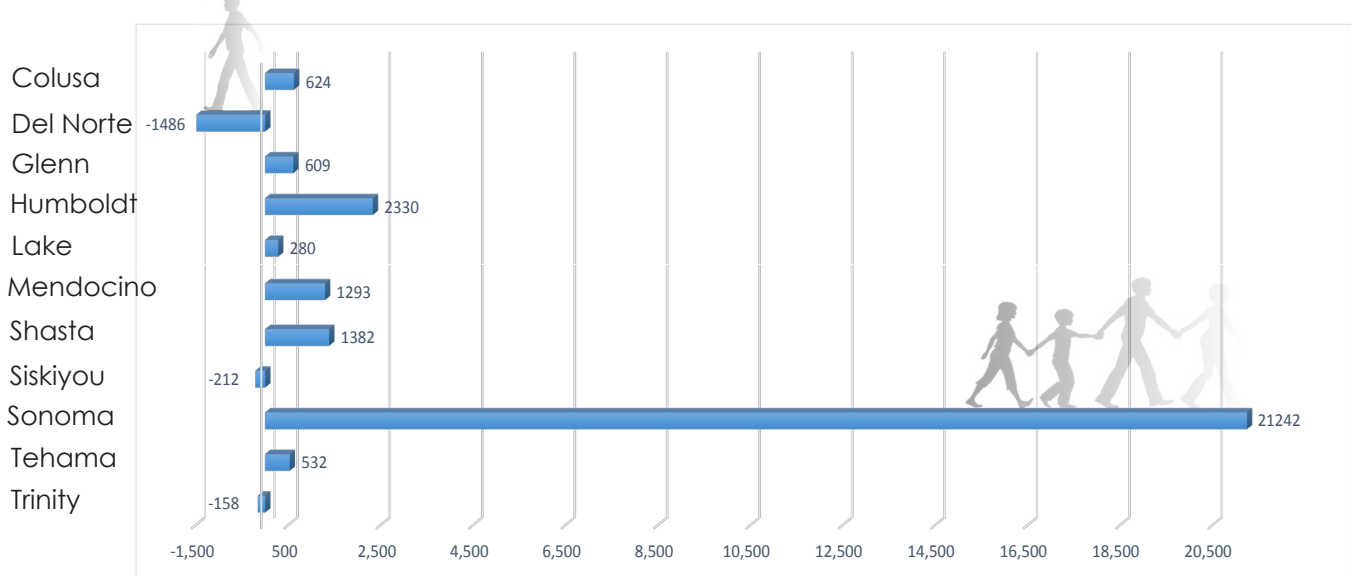
Source: U.S. Census, 2011-2015 American Community Survey 5 Year Estimates - Humboldt County, California, Demographic and Housing Estimates.

\*Note: Total may exceed 100 percent. Individuals identifying as Hispanic race may self-declare their ethnicity in several categories, including but not limited to African-American, White or Native American.

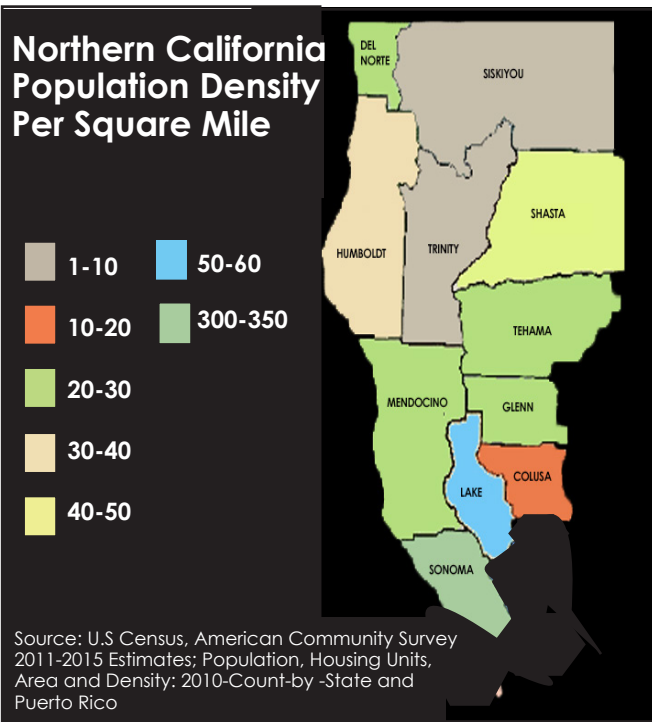
# Humboldt County Profile



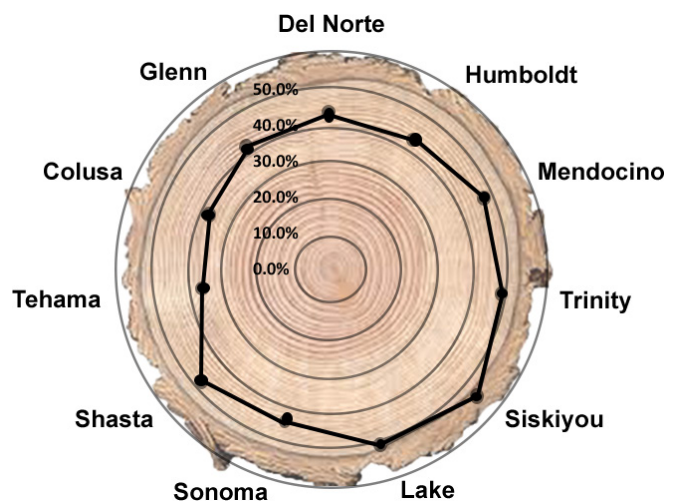
## Population Change 2010-2017



Source: California Department of Finance Demographic Research Unit; Report E-4 Populations Estimates for Cities, Counties and the State 2011-2017



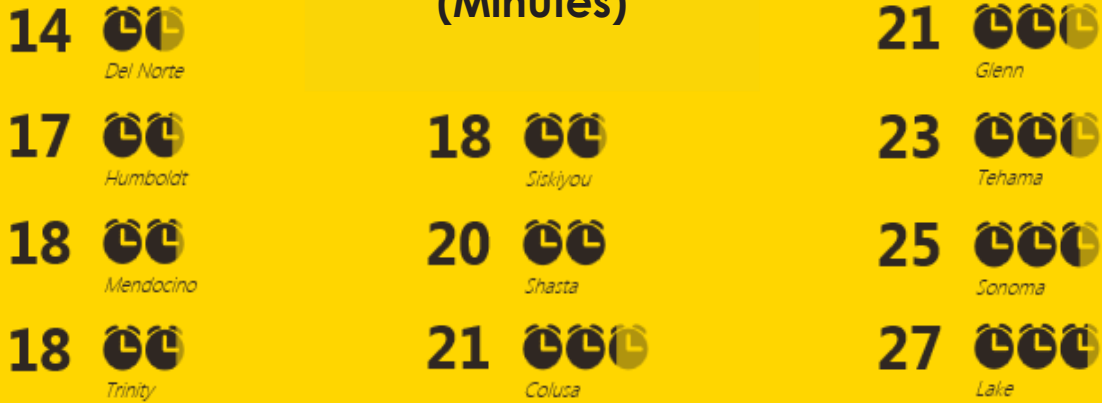
## Percent of Population Over Age 45 By County



Source: U.S. Census, American Community Survey- July 1, 2016 Population Estimate

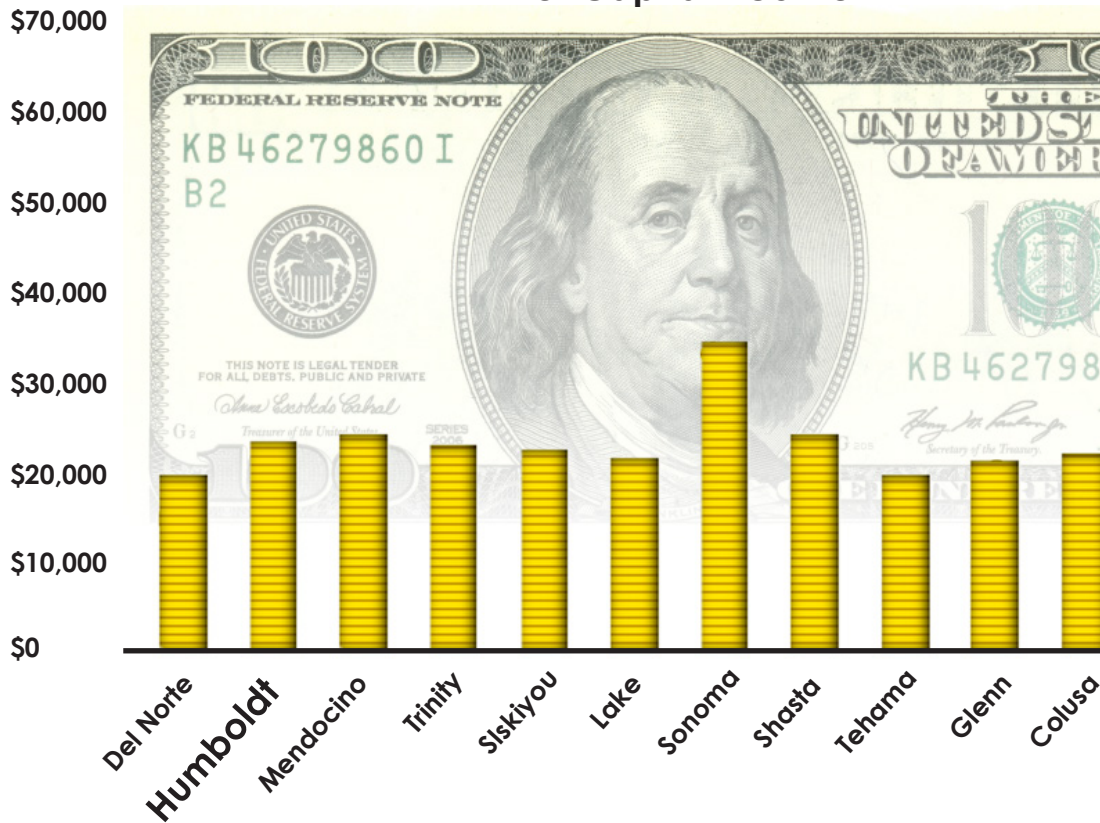
# Humboldt County Profile

## Average Travel Time to Work (Minutes)



Source: U.S. Census, American Community Survey, 5 Year Estimates; Average Commute Time to Work

## Per Capita Income

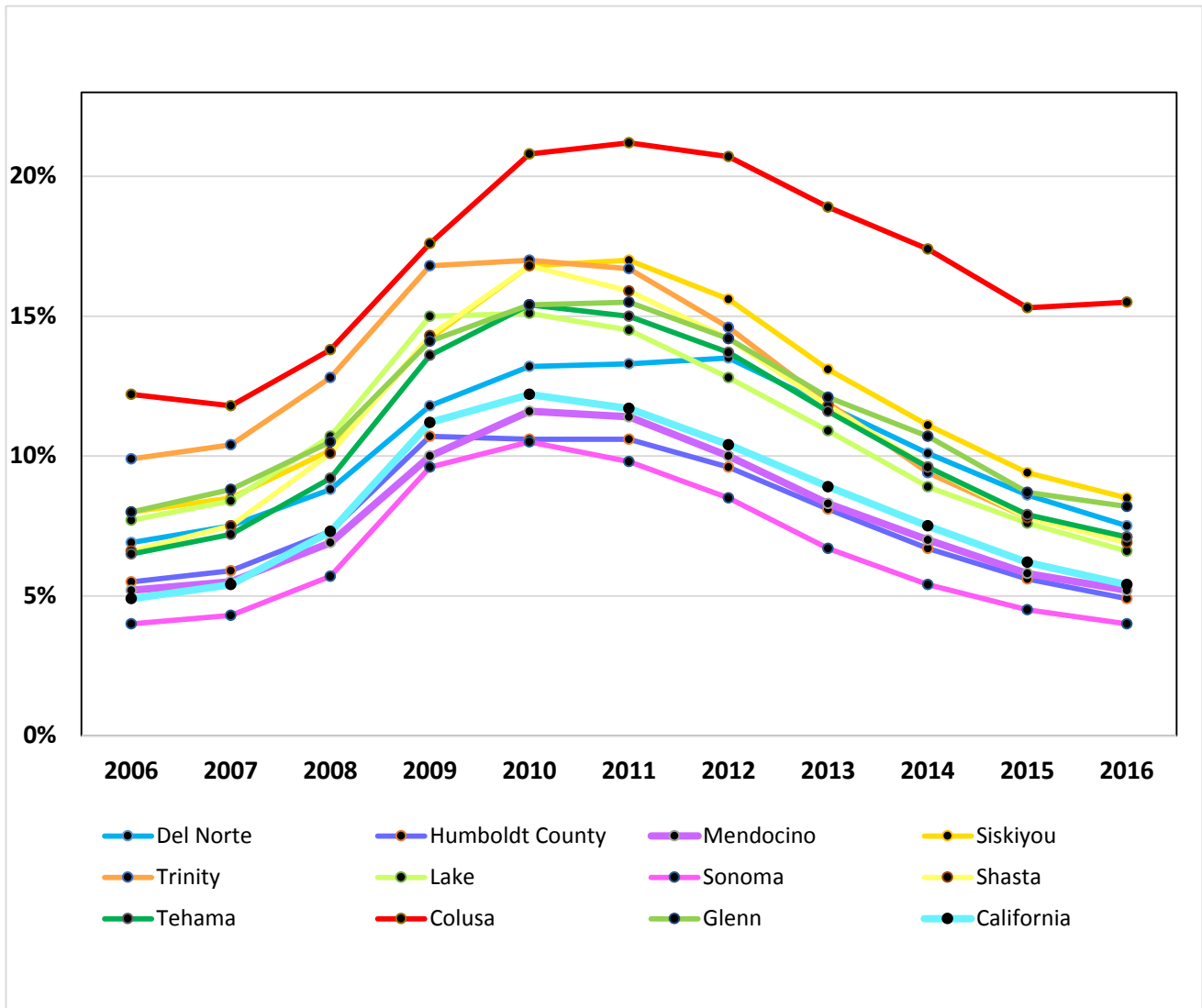


Source: U.S. Census, American Community Survey 2011-2015 5 Year Estimates; 2015 Select Economic Characteristics

# Humboldt County Profile



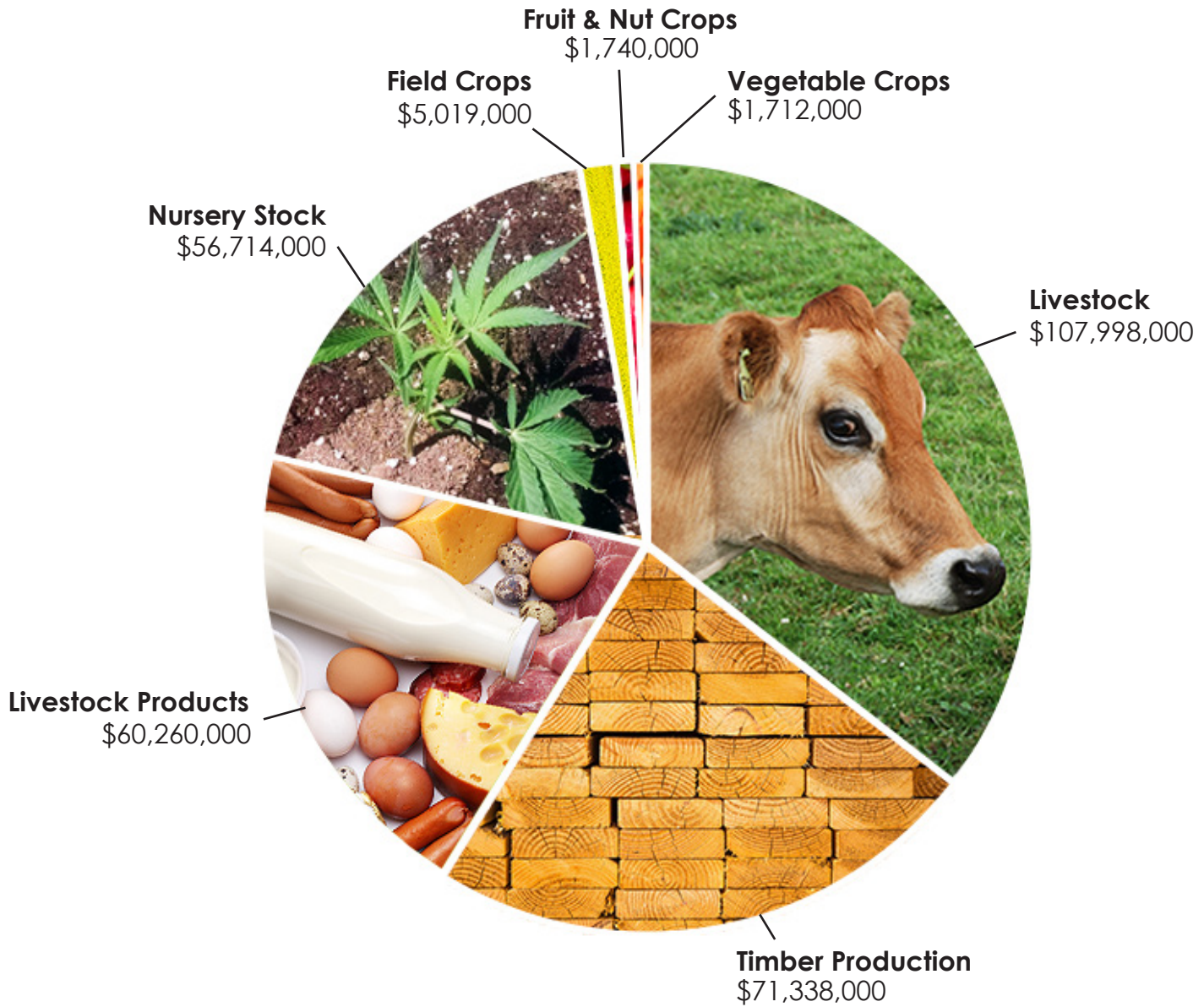
## Annual Average Unemployment Rate



Source: Employment Development Department - Labor Market Information Division; Historical Unemployment and Labor Force 2006-2016; Annual Average Unemployment Rates

# Humboldt County Profile

## Gross Agricultural Receipts 2015



Source: Humboldt County Agricultural Commissioner; Humboldt County Crop and Livestock Report, 2015.