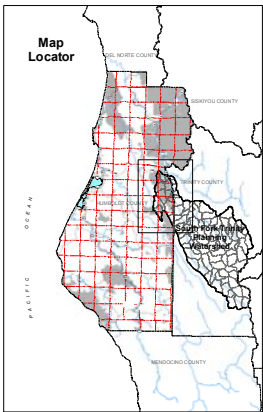
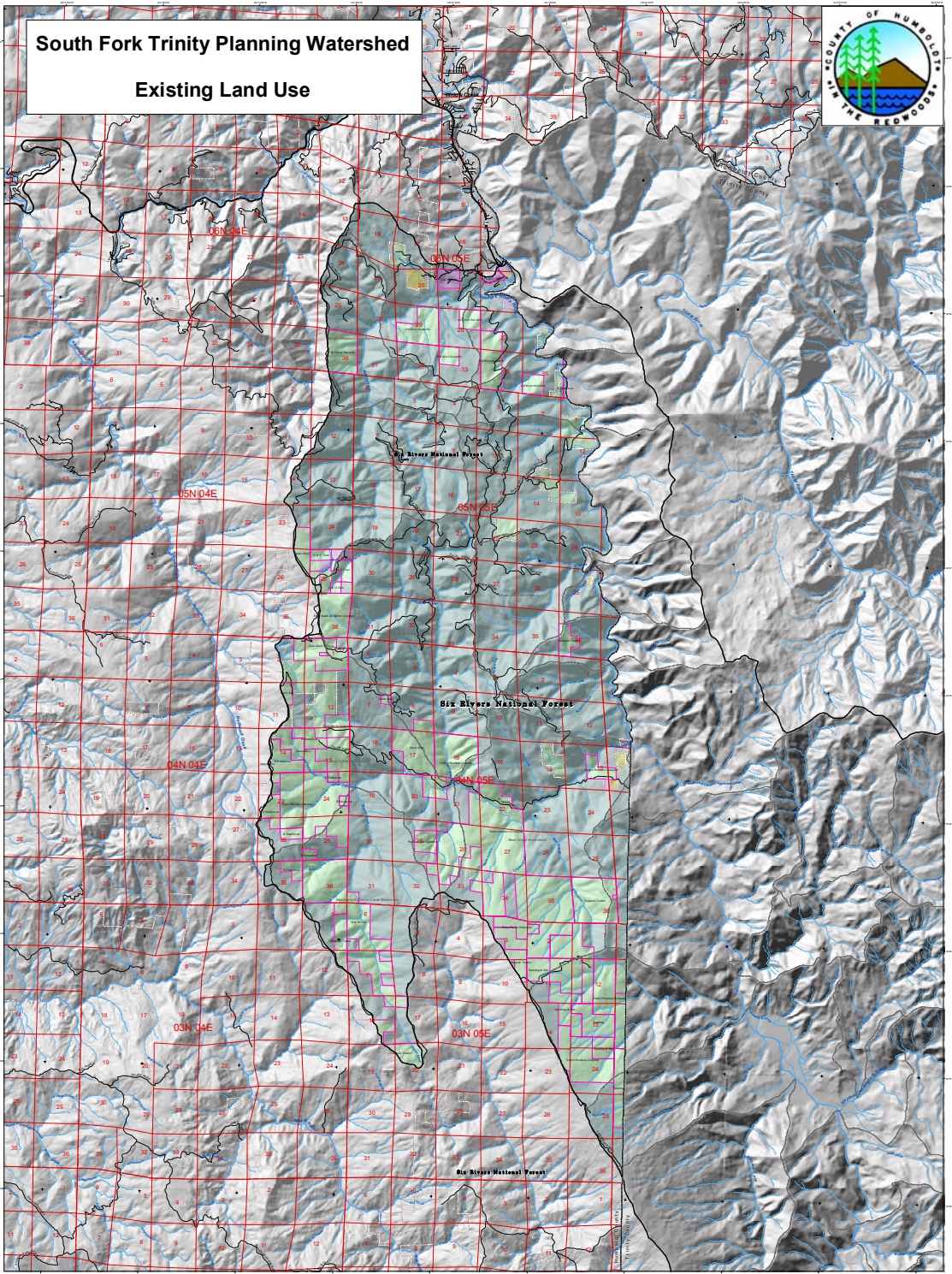


South Fork Trinity Planning Watershed

Existing Land Use



Legend

- timber production
 - agriculture
 - grazing/limber
 - open space/parks
 - tribal lands
 - public
 - rural residential
 - heavy industrial
 - light industrial
 - single family residential
 - multi family residential
 - commercial
 - vacant
 - gravel mining
 - landfill
 - golf course
 - Land Owners > 640 Acres
 - County Boundary
 - City Boundary
 - Public Lands
- Planning Watersheds
 - SOUTH FORK TRINITY
 - CDF Calwater Sub- Watersheds
- Highways and Roads
 - Interstate HWY
 - US or State HWY
 - HWY or Secondary Road
 - Local Road
- Hydrography
 - Major River or Stream
 - Continuous Perennial
 - Continuous Intermittent
 - Subsurface
- Public Land Survey
 - Townships
 - Sections
- Land use codes are based on the National Wetlands Inventory, which is based on the National Wetlands Inventory and the National Wetlands Inventory.
- Map prepared by Humboldt County Planning Department, 2012.

South Fork Trinity Planning Watershed Characteristics

| Characteristic | Value |
|-----------------------------|--------------------|
| Total Acres | 596,497 |
| Total Acres within County | 73,204 |
| % of Total within County | 12.29% |
| Average Parcel Size (Acres) | 239.20 |
| Largest Watershed | Trinity River |
| Dominant Land Use | open space/parks |
| Largest Private Land Owner | Timber Products Co |

South Fork Trinity Planning Watershed Land Use

| Existing Land Use | Total Acres | % of Watershed* |
|----------------------------|-------------|-----------------|
| open space/parks | 92,382 | 71.65% |
| timber production | 20,074 | 27.42% |
| rural residential - vacant | 488 | 0.68% |
| rural residential | 251 | 0.34% |

South Fork Trinity Planning Watershed Private Ownership over 640 acres

| Private Land Owner | Total Acres | % of Watershed* |
|-------------------------|-------------|-----------------|
| Timber Products Company | 6,731 | 71.65% |
| Simon Timber | 1,636 | 2.64% |
| James Russ | 1,736 | 2.37% |
| Cal River Services | 1,604 | 2.19% |
| R & S Cook | 1,257 | 2.13% |
| Spicer-Wheeler Company | 1,284 | 1.78% |
| Stalling & Son | 1,234 | 1.69% |
| R Emerson | 921 | 1.26% |

South Fork Trinity Planning Watershed Public Land

| Public Land | Total Acres | % of Watershed* |
|----------------------------|-------------|-----------------|
| Six Rivers National Forest | 62,336 | 71% |

*Note: Percent of Watershed with a parcel of planning jurisdiction is highlighted in blue.