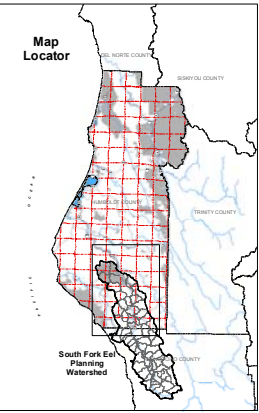
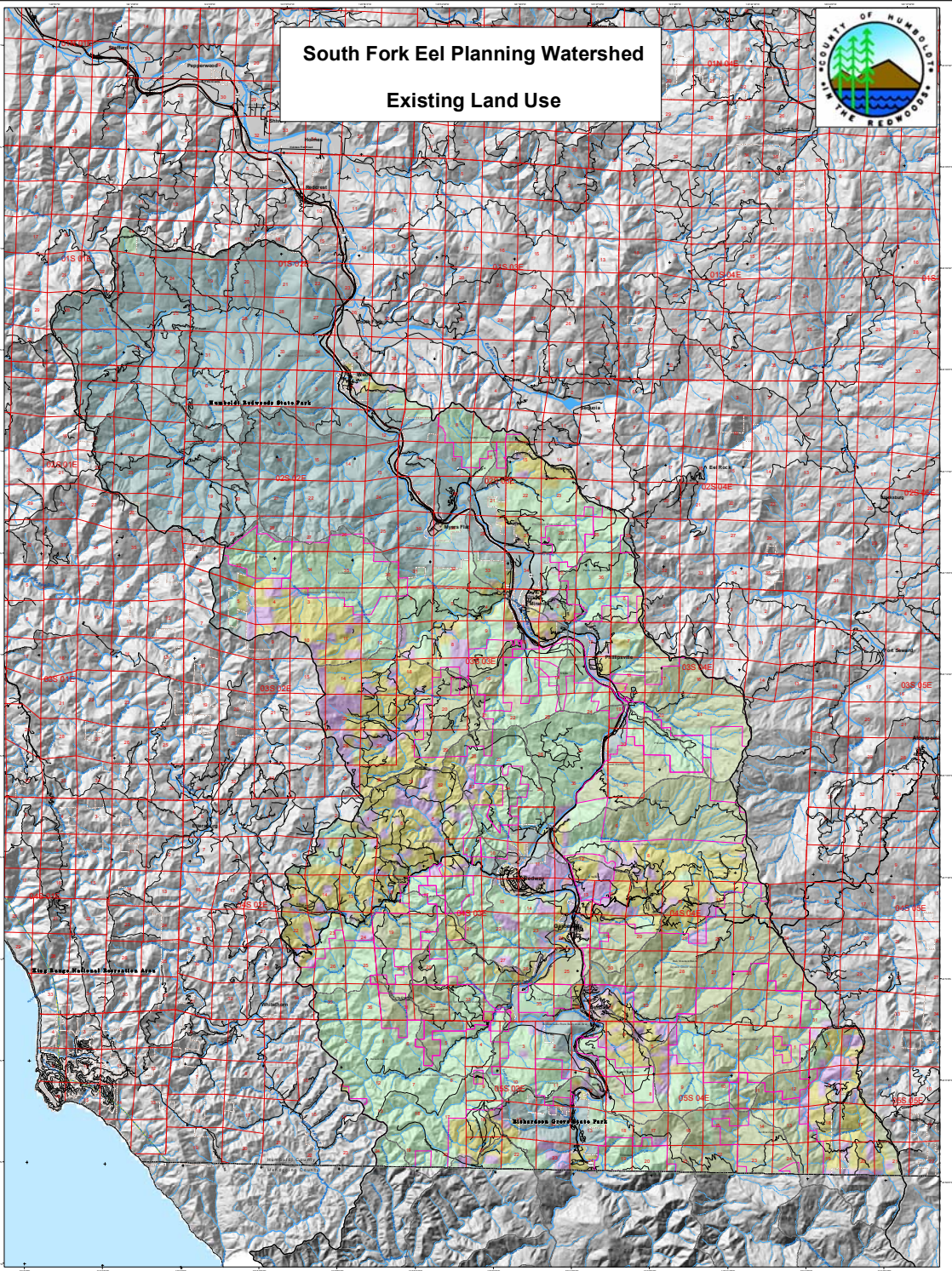


# South Fork Eel Planning Watershed Existing Land Use



### Legend

**Existing Land Use - 2002**

- timber production
- agriculture
- grazing/timber
- open space/parks
- tribal lands
- rural residential
- public
- heavy industrial
- light industrial
- single family residential
- multi family residential
- commercial
- vacant
- gravel mining
- landfill
- golf course
- other

**Planning Watersheds**

- C3 SOUTH FORK EEL
- CDF Calwater Sub - Watersheds

**Highways and Roads**

- Interstate HWY
- US or State HWY
- HWY or Secondary Road
- Local Road

**Hydrography**

- Major River or Stream
- Continuous Perennial
- Continuous Intermittent
- Subsurface

**Public Land Survey**

- Townships

**Other**

- County Boundary
- City Boundary
- Public Lands
- Coastal Zone Boundary

### South Fork Eel Planning Watershed Characteristics

Characteristic	Value
Total Acres	417,213
Total Acres within County	200,392
% of Total within County	57%
Average Parcel Size (Acres)	43.87
Planning Watershed	South Fork Eel River
Planning Land Use	timber production 4
Largest Private Land Owner	Barnum Trust

### South Fork Eel Planning Watershed Land Use

Land Use	Total Acres	% of Watershed
timber production	61,952	30.2%
public lands	59,352	28.8%
grazing/timber	39,927	19.4%
rural residential	28,563	14.2%
single family residential	13,451	6.3%
public	838	0.3%
multi family residential	254	0.1%
commercial	233	0.1%
vacant	164	0.1%
single family residential - vacant	144	0.0%
other	77	0.0%
multi family residential - vacant	68	0.0%
golf course	51	0.0%
light industrial - vacant	45	0.0%
vacant	40	0.0%
commercial - vacant	15	0.0%
gravel mining	1	0.0%
landfill	1	0.0%
multi family residential - vacant	1	0.0%
heavy industrial - vacant	1	0.0%
heavy industrial	1	0.0%

### South Fork Eel Planning Watershed Private Land Ownership over 640 Acres

Private Land Owner	Total Acres	% of Watershed
Barnum Trust	12,210	3.1%
Buck Mountain Ranch	7,830	1.9%
Goodie Landfill	6,610	1.6%
E. Johnson	6,091	1.5%
E. & F. Harbut	6,046	1.5%
E. & W. Searles	5,000	1.2%
N. Searles	3,841	1.0%
E. Chapman	3,200	0.8%
G. Rosen	2,872	0.7%
Wagner Land Company	2,564	0.7%
A. Marshall	2,492	0.6%
R. Kahn	1,770	0.4%
Goodie State Farms	1,660	0.4%
F. Wadsworth	1,562	0.4%
C. Waller	1,552	0.4%
E. Waller	1,418	0.3%
E. Tomes	1,178	0.3%
E. L. Harbut	1,145	0.3%
F. Harbut	1,050	0.3%
L. Harbut	1,010	0.2%
Donn Family	955	0.2%
Marble Family	877	0.2%
Wagner Family	867	0.2%
F. Marshall	837	0.2%
E. & C. Marshall	703	0.2%

### South Fork Eel Planning Watershed Public Lands

Public Land	Total Acres	% of Watershed
Humboldt Redwoods State Park	48,985	12.0%
Redwood Grove State Park	1,713	0.4%
Other BLM	1,307	0.3%
Humboldt State University Forest	250	0.1%