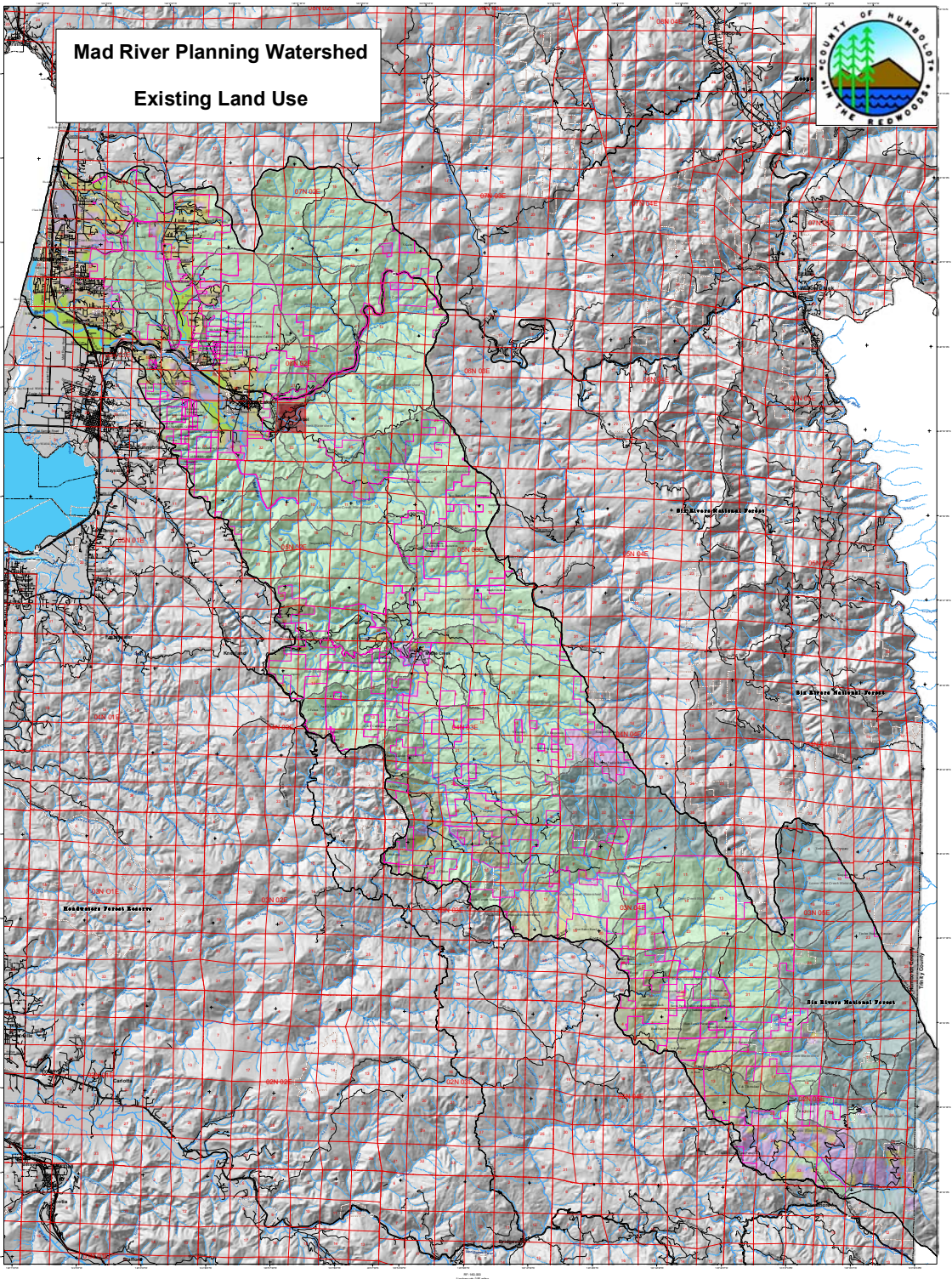
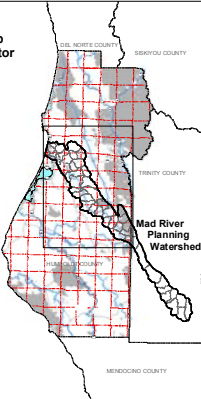


Mad River Planning Watershed

Existing Land Use



Map Locator



Legend

- Existing Land Use - 2002
 - timber production
 - agriculture
 - grazing/timber
 - open space/parks
 - tribal lands
 - public
 - rural residential
 - heavy industrial
 - light industrial
 - single family residential
 - multi family residential
 - commercial
 - vacant
 - gravel mining
 - landfill
 - golf course
 - other
 - Land Owners > 640 Acres
 - City Boundary
 - Public Lands
- Planning Watersheds**
 - C3 MAD RIVER
 - CDF Calaveras Sub - Watersheds
- Highways and Roads**
 - Interstate HWY
 - US or State HWY
 - HWY or Secondary Road
 - Local Road
- Hydrography**
 - Major River or Stream
 - Continuous Perennial
 - Continuous Intermittent
 - Subsurface
- Public Land Survey**
 - Townships
 - Sections

Mad River Planning Watershed Characteristics		
Characteristic	Value	% of Watershed
Total Acres	307,143	100%
Total Acres within County	294,337	95.8%
% of Total within County	95%	
Average Parcel Size (Acres)	6.36	
Domestic Land Use	Timber Production	
Mad River	61,000	19.8%
Mad River	1,000	0.3%

Mad River Planning Watershed Private Ownership over 640 acres		
Private Land Owner	Total Acres	% of Watershed
Simon Timber	94,126	30.6%
S.E. Corporation	6,795	2.2%
Pacific Lumber Company	4,610	1.5%
Fort Baker Ranch	3,256	1.1%
A.T. Redwood	3,690	1.2%
A.F. Carrington	3,006	1.0%
V. Group	2,816	0.9%
James Elias	2,053	0.7%
Mad Family Partnership	1,888	0.6%
Sierra Pacific Industries	1,796	0.6%
E. Rose	1,297	0.4%
G. Bocky	1,176	0.4%
Marin Forest Ranch	1,122	0.4%
F. Rose	1,126	0.4%
Marble Mt.-Astoria California	1,107	0.4%
M.K. Miller	1,120	0.4%
Mackintosh	1,068	0.3%
E. Fisher	890	0.3%
Frederick Lt	867	0.3%
A.B. Timmons	786	0.3%
Russ Ranch & Timber Company	638	0.2%

Mad River Planning Watershed Land Use			
Existing Land Use	Total Acres	% of Watershed	% of County
timber production	14,528	4.7%	48.0%
public lands	30,238	9.8%	9.8%
agriculture	18,022	5.9%	5.9%
rural residential	12,460	4.1%	4.1%
rural residential - vacant	8,300	2.7%	2.7%
public lands	2,330	0.8%	0.8%
single family residential	1,148	0.4%	0.4%
public	1,088	0.4%	0.4%
heavy industrial	678	0.2%	0.2%
city	659	0.2%	0.2%
gravel mining	588	0.2%	0.2%
school	215	0.1%	0.1%
single family residential - vacant	168	0.1%	0.1%
commercial	160	0.1%	0.1%
multi family residential	170	0.1%	0.1%
golf course	110	0.0%	0.0%
school	70	0.0%	0.0%
church	68	0.0%	0.0%
single industrial - vacant	68	0.0%	0.0%
light industrial - vacant	68	0.0%	0.0%
commercial - vacant	54	0.0%	0.0%
single family residential - vacant	48	0.0%	0.0%
light industrial	33	0.0%	0.0%
total lands	7	0.0%	0.0%