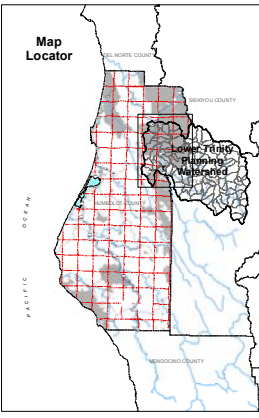
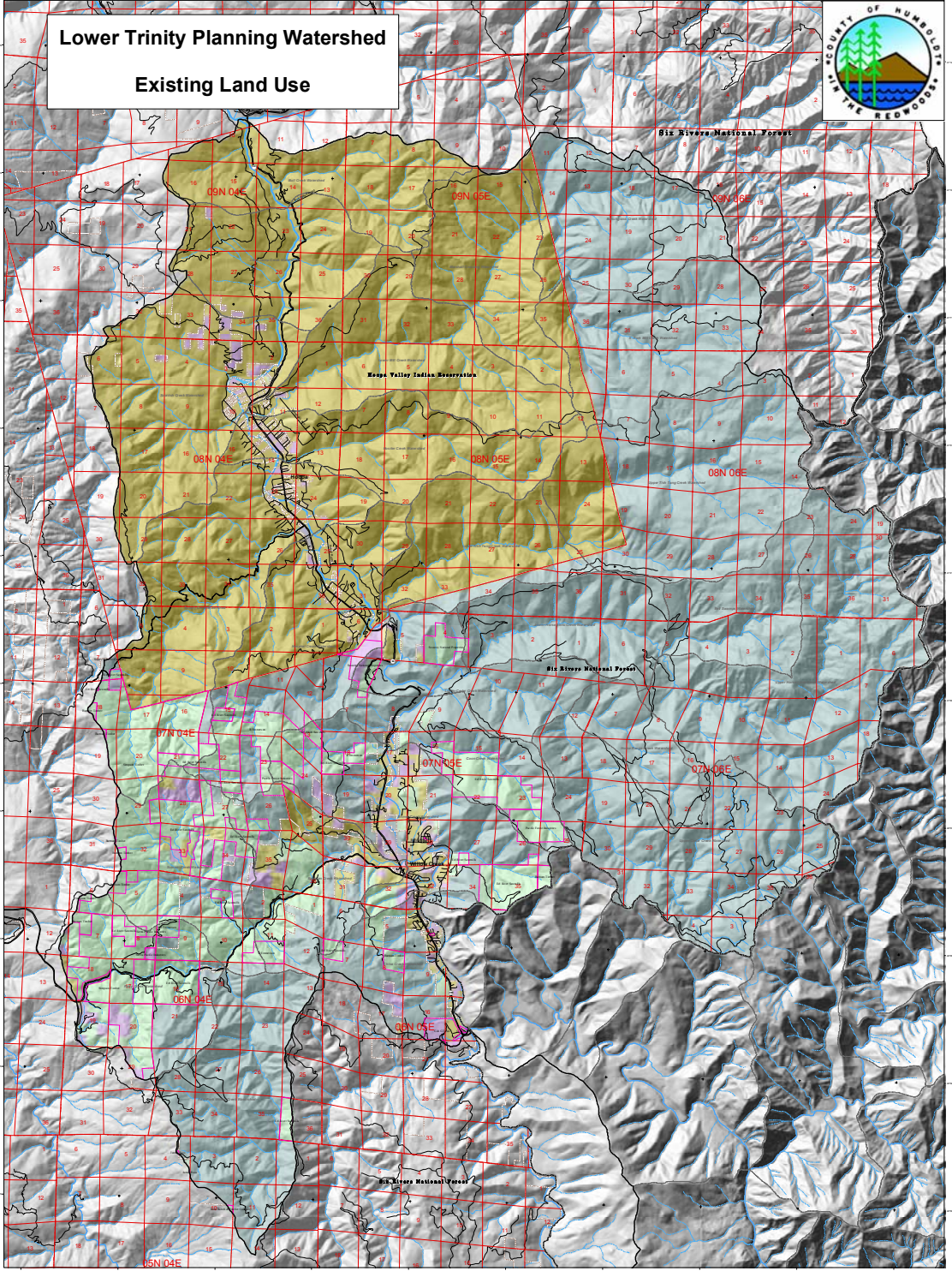




# Lower Trinity Planning Watershed

## Existing Land Use



### Legend

**Existing Land Use - 2002**

- timber production
- agriculture
- grazing/timber
- open space/parks
- tribal lands
- public
- rural residential
- heavy industrial
- light industrial
- single family residential
- multi family residential
- commercial
- vacant
- gravel mining
- landfill
- golf course
- other
- Land Owners > 640 Acres
- City Boundary
- Public Lands

**Planning Watersheds**

- LOWER TRINITY
- CDP Calaveras Sub - Watersheds

**Highways and Roads**

- Interstate HWY
- US or State HWY
- HWY or Secondary Road
- Local Road

**Hydrography**

- Major River or Stream
- Continuous Perennial
- Continuous Intermittent
- Subsurface

**Public Land Survey**

- Townships
- Sections

**Map**

Land use values shown in this legend are not spatially explicit values on the map. Land use values are shown on the map as polygons. The map is not intended to be used as a legal document. The map is intended to be used as a planning tool only. The map is intended to be used as a planning tool only. The map is intended to be used as a planning tool only.

Lower Trinity Planning Watershed Characteristics	
Characteristic	Value
Total Acres	654,967
Total Acres within County	152,277
% of Total within County	29%
Average Parcel Size (Acres)	69.72
Largest Watershed	Trinity River
Dominant Land Uses	open space/parks & tribal lands
Largest Private Land Owner	Simpson Timber

Lower Trinity Planning Watershed Public Lands	
Public Land	Total Acres
Six Rivers National Forest	93,573
Hoopa Valley Indian Reservation	68,456

Lower Trinity Planning Watershed Land Use			
Existing Land Use	Total Acres	% of Watershed*	
open space/parks	93,682	48.72%	
tribal lands	68,688	35.86%	
timber production	21,045	10.94%	
rural residential	4,501	2.34%	
rural residential - vacant	3,713	1.93%	
public	167	0.09%	
commercial	83	0.04%	
gravel mining	41	0.02%	
multi family residential	25	0.01%	
church	18	0.01%	

Lower Trinity Planning Watershed Private Ownership over 640 acres			
Private Land Owner	Total Acres	% of Watershed*	
Red River Sawmills	5,171	2.65%	
R Emmerson	1,896	0.99%	
Security National Properties	795	0.41%	
Pacific Forest Industries	751	0.39%	

Map prepared by Humboldt County Community Development Services (HCCDS), Sept. 2010.

Map prepared by Humboldt County Community Development Services (HCCDS), Sept. 2010.