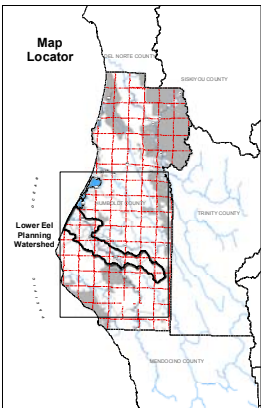
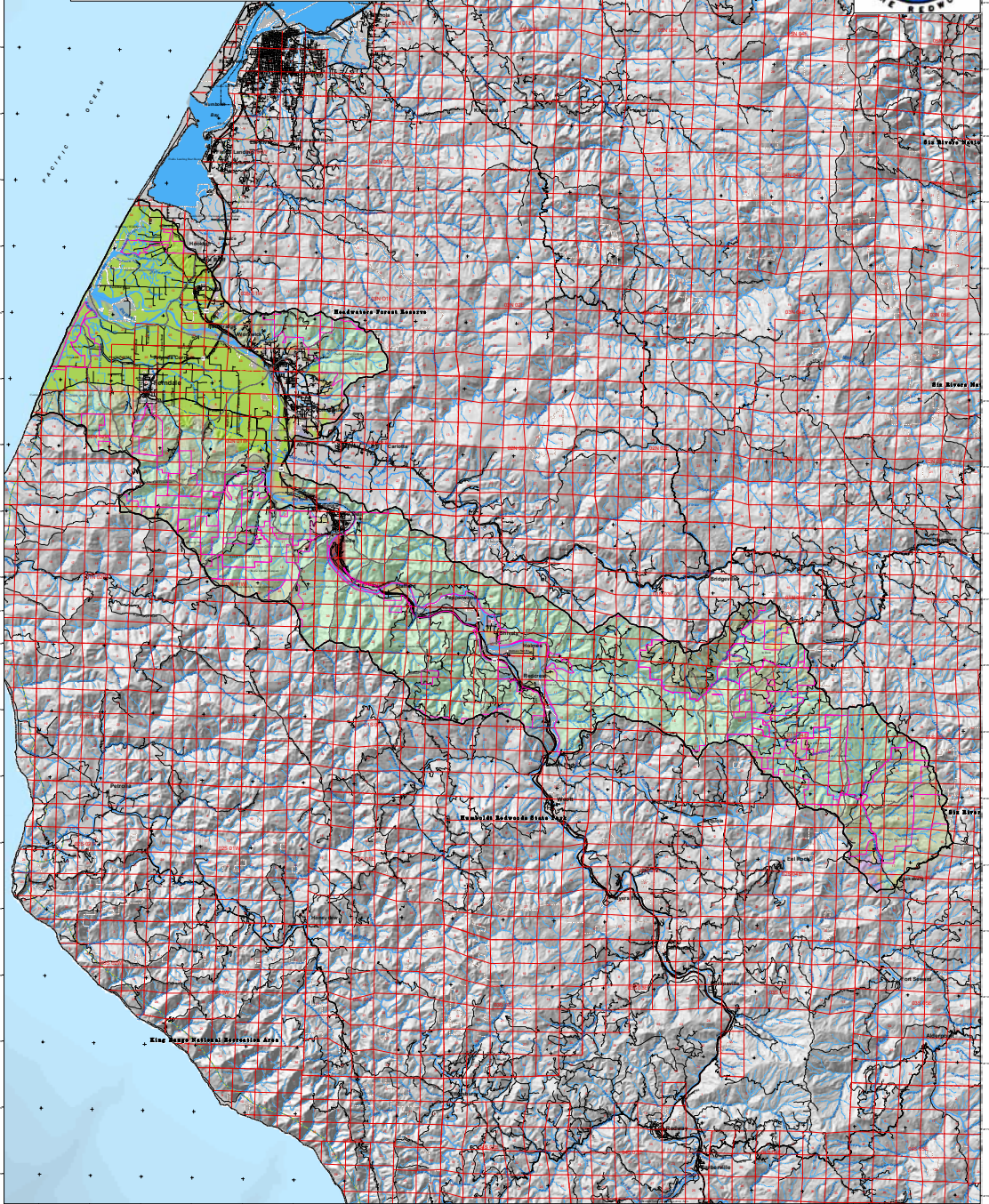


Lower Eel Planning Watershed

Existing Land Use



Legend

Existing Land Use - 2002

- timber production
- agriculture
- grazing/timber
- open space/parks
- tribal lands
- public
- rural residential
- heavy industrial
- light industrial
- single family residential
- multi family residential
- commercial
- vacant
- gravel mining
- landfill
- golf course
- other

Planning Watersheds

- LOWER EEL
- COF Colwater Sub - Watersheds

Highways and Roads

- Interstate HWY
- US or State HWY
- HWY or Secondary Road
- Local Road

Hydrography

- Major River or Stream
- Continuous Perennial
- Continuous Intermittent
- Subsurface

Public Land Survey

- Townships
- Sections

Other

- Land Owners > 640 Acres
- County Boundary
- City Boundary
- Public Lands
- Coastal Zone Boundary

Scale: 1 inch = 10 miles. Map data: 2002. Source: USDA, BLM, Humboldt County GIS, etc.

Lower Eel Planning Watershed Characteristics		
Characteristic	Value	
Total Acres	93,022	
Total Acres Within County	93,022	
% of State in County	100%	
Average Parcel Size (Acres)	38.53	
# of Sub-Watersheds	18	
Planning Watershed	Eel River	
Approved Land Use	Timber Production	
Approved Land Owner	Pacific Lumber	

Lower Eel Planning Watershed Land Use		
Existing Land Use	Total Acres	% of Watershed
timber production	89,445	96.05%
grazing/timber	33,018	35.49%
agriculture	32,688	35.14%
rural residential	5,700	6.13%
city	5,083	5.47%
open space/parks	4,888	5.26%
rural residential - vacant	2,701	2.91%
public	788	0.85%
heavy industrial	645	0.69%
vacant	606	0.65%
commercial	421	0.45%
vacant	238	0.26%
multi family residential	178	0.19%
multi family residential - vacant	70	0.08%
commercial - vacant	66	0.07%
heavy industrial - vacant	10	0.01%
church	7	0.00%
school	4	0.00%
multi family residential - vacant	2	0.00%

Lower Eel Planning Watershed Private Ownership			
Private Land Owner	Total Acres	% of Watershed	Total Acres
Pacific Lumber	81,821	87.97%	81,821
A. Green	5,446	5.86%	5,446
B. & C. Barrett	5,415	5.82%	5,415
F. Lucas	4,407	4.74%	4,407
M. & M. Man	4,064	4.37%	4,064
Humboldt Timber & Livestock	3,230	3.47%	3,230
W. Dorn	2,872	3.09%	2,872
Simpson Timber	2,771	2.98%	2,771
G. Brinkman	2,530	2.72%	2,530
Betha Ross Lyell Foundation	2,452	2.64%	2,452
F. Green	2,168	2.33%	2,168
State Forest & Timber Company	2,081	2.24%	2,081
A. & C. Hyslop	1,838	1.98%	1,838
Shannon B. Beach	1,446	1.56%	1,446
A. Grandy	1,344	1.44%	1,344
J. Silen	1,272	1.37%	1,272
F. Engel	1,248	1.34%	1,248
T. Brown	1,238	1.33%	1,238
A. Green	1,063	1.14%	1,063
T. Cronick	1,007	1.08%	1,007
D. & P. Hyslop	893	0.96%	893
Barry Green	847	0.91%	847
F. & M. Barry	741	0.79%	741
T. W. Chiswick	738	0.79%	738
Real Family Trust	698	0.75%	698

Lower Eel Planning Watershed Public Lands		
Public Land	Total Acres	% of Watershed
Humboldt Redwoods State Park	3,260	3.51%
Eel River Wildlife Area	1,300	1.41%
Other State Lands	984	1.06%