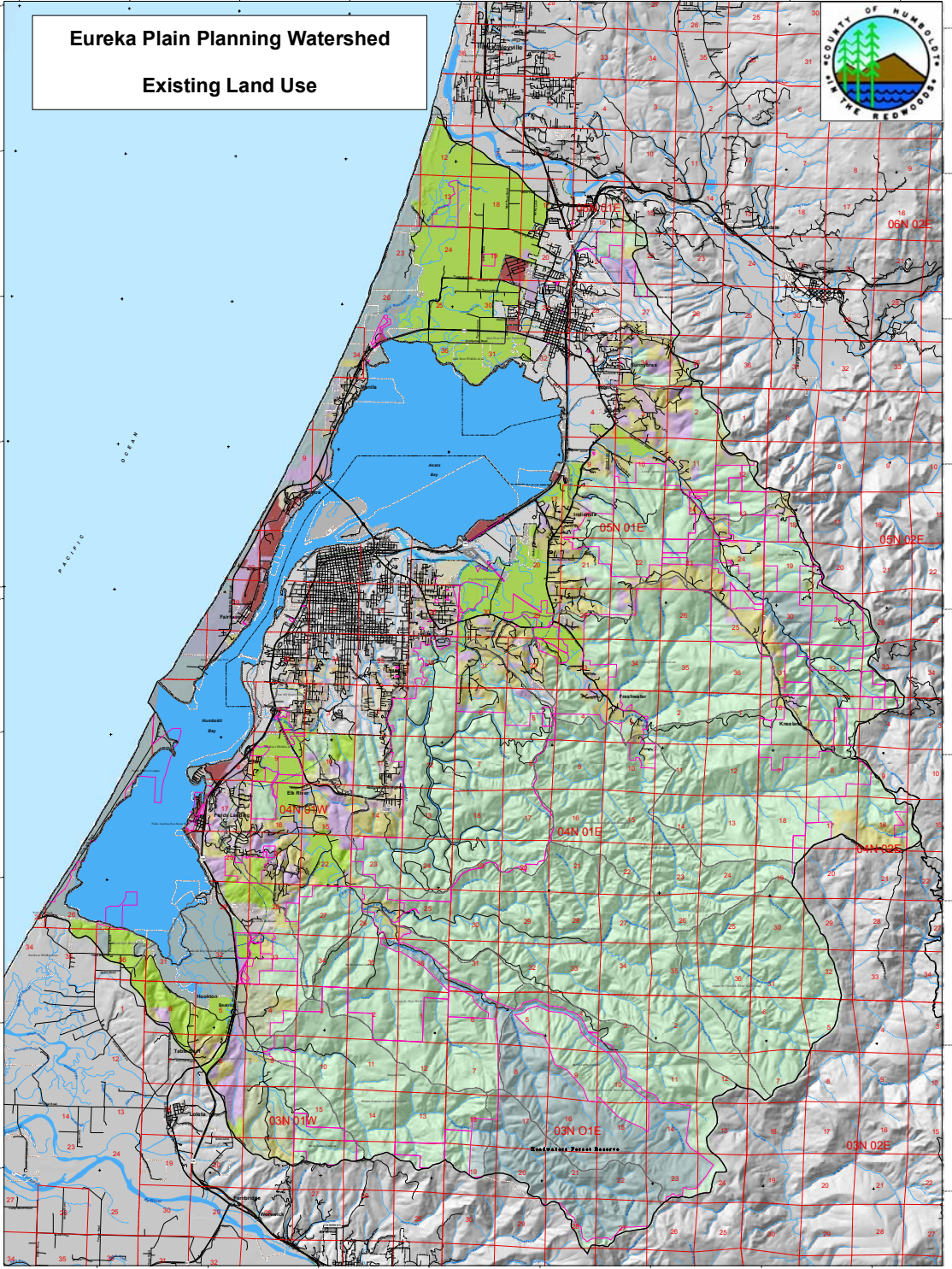
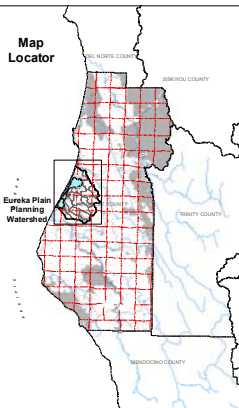


Eureka Plain Planning Watershed

Existing Land Use



Map Locator



Legend

- timber production
 - agriculture
 - grazing/timber
 - open space/parks
 - tribal lands
 - public
 - rural residential
 - heavy industrial
 - light industrial
 - single family residential
 - multi family residential
 - commercial
 - vacant
 - gravel mining
 - landfill
 - golf course
 - other
 - Land Owners > 640 Acres
 - County Boundary
 - City Boundary
 - Public Lands
 - Coastal Zone Boundary
- Planning Watersheds**
- EUREKA PLAIN
 - CDF Calwater Sub - Watersheds
- Highways and Roads**
- Interstate HWY
 - US or State HWY
 - HWY or Secondary Road
 - Local Road
- Hydrography**
- Major River or Stream
 - Continuous Perennial
 - Continuous Intermittent
 - Subsurface
- Public Land Survey**
- Townships
 - Sections

Eureka Plain Planning Watershed Characteristics

Characteristic	Value
Total Acres	154,617
Total Acres within County	154,617
% of Total County	100%
Average Parcel Size (Acres)	1.26
# of Sub-Watersheds	23
Largest Watershed	City of Eureka
Dominant Land Use	Timber Production
Largest Private Land Owner	Pacific Lumber

Eureka Plain Planning Watershed Private Land Ownership > 640 Acres		
Land Owner	Total Acres	% of Watershed
Pacific Lumber Company	38,658	31.84%
Waldman Timber	17,518	14.00%
Brown Timber	1,056	0.80%
R Emmerson	930	0.78%

Eureka Plain Planning Watershed Public Lands		
Public Land	Total Acres	% of Watershed
Waldman Forest District	2,478	6.00%
City of Eureka*	3,087	2.46%
Humboldt Bay National Wildlife Refuge	2,626	2.11%
City of Arcata*	1,401	1.12%
Other City, County, or Local Agency*	1,100	0.88%
Other State Lands	680	0.55%

Eureka Plain Planning Watershed Land Use

Existing Land Use	Total Acres	% of Watershed
timber production	67,499	54.10%
open space/parks	17,019	13.66%
agriculture	12,365	9.91%
rural residential	8,503	6.82%
light residential - vacant	7,392	5.90%
single family residential	2,600	2.00%
gravel/miner	1,400	1.13%
landfill	1,150	0.90%
heavy industrial	967	0.78%
single family residential - vacant	368	0.31%
heavy industrial - vacant	309	0.31%
school	300	0.26%
vacant	270	0.26%
commercial	260	0.26%
multi family residential	250	0.26%
golf course	190	0.15%
unclassified	129	0.10%
landfill	86	0.07%
church	66	0.05%
commercial - vacant	30	0.02%
multi family residential - vacant	28	0.02%
light industrial - vacant	19	0.01%
light industrial	8	0.00%
landfill	2	0.00%
camp	2	0.00%

Map prepared by Humboldt County Community Development Services (2022), Page 2/22