

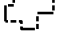











Figure 4-2a

Northern Humboldt Prime Agricultural Soils

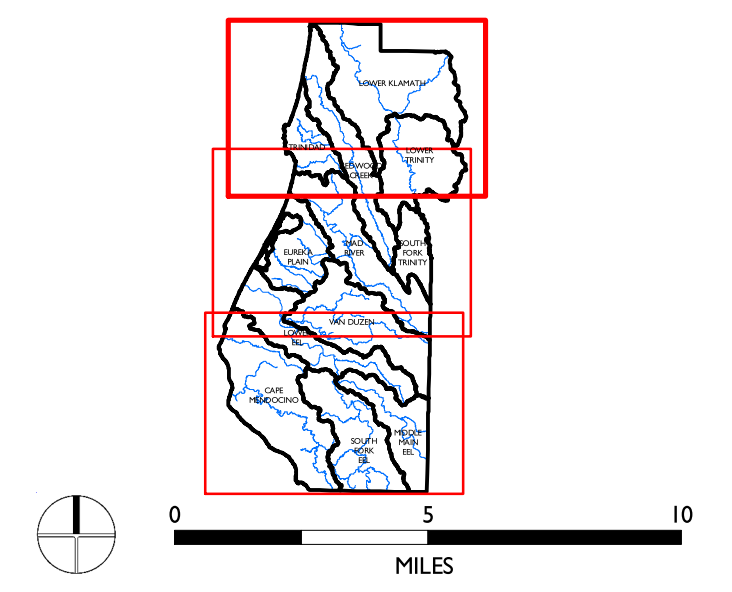
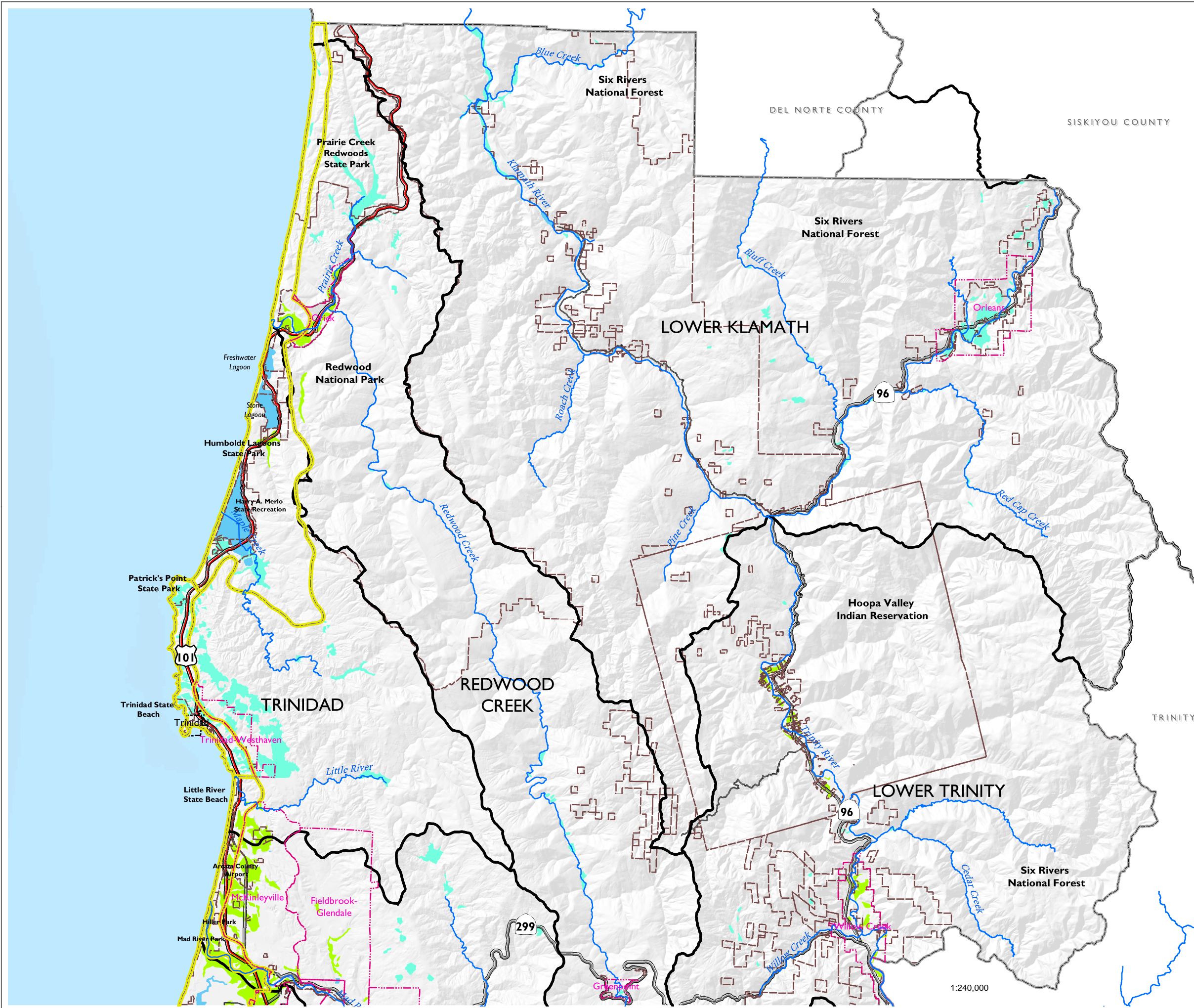
-  Planning Watersheds
-  County Boundary
-  Incorporated City
-  Community Planning Area
-  Coastal Zone Boundary
-  Public Lands
-  HWY 101
-  US or State HWY
-  HWY or Secondary Road
-  Major River or Stream
-  Storie Index 80-100
-  Potential Ag. Lands

Note:
More than 80% of Humboldt County's Agricultural lands are used for grazing which are not shown on this map. See Existing Land Use and Williamson Act Contract maps for those rangelands.

Data Sources:
Prime Agricultural Soils shown are based on map of Soils of Western Humboldt County, 1965. Remanuscoped onto USGS 7.5 minute quads for digitizing. Covers main agricultural areas of Humboldt County. Potential Agricultural Land Areas are areas of alluvial soil, less than 15% slope, and not in urban areas. May not reflect current agricultural capability, land use, or ownership. Hydrography based on CDF's Fire Resource Assessment Project (FRAP) streams dataset downloaded from <http://frap.cdf.ca.gov/data/frapgisdata/select.asp>. Watershed Boundaries are based on CDF's Calwater v. 2.2 dataset also obtained from FRAP. Terrain shading is based on 10 Meter Digital Elevation Models from FRAP.

This map is intended for display purposes only and should not be used for precise measurement or navigation. Data has not been completely checked for accuracy.

Map produced by Humboldt County Community Development Services (HCCDS), July 2002.



1:240,000