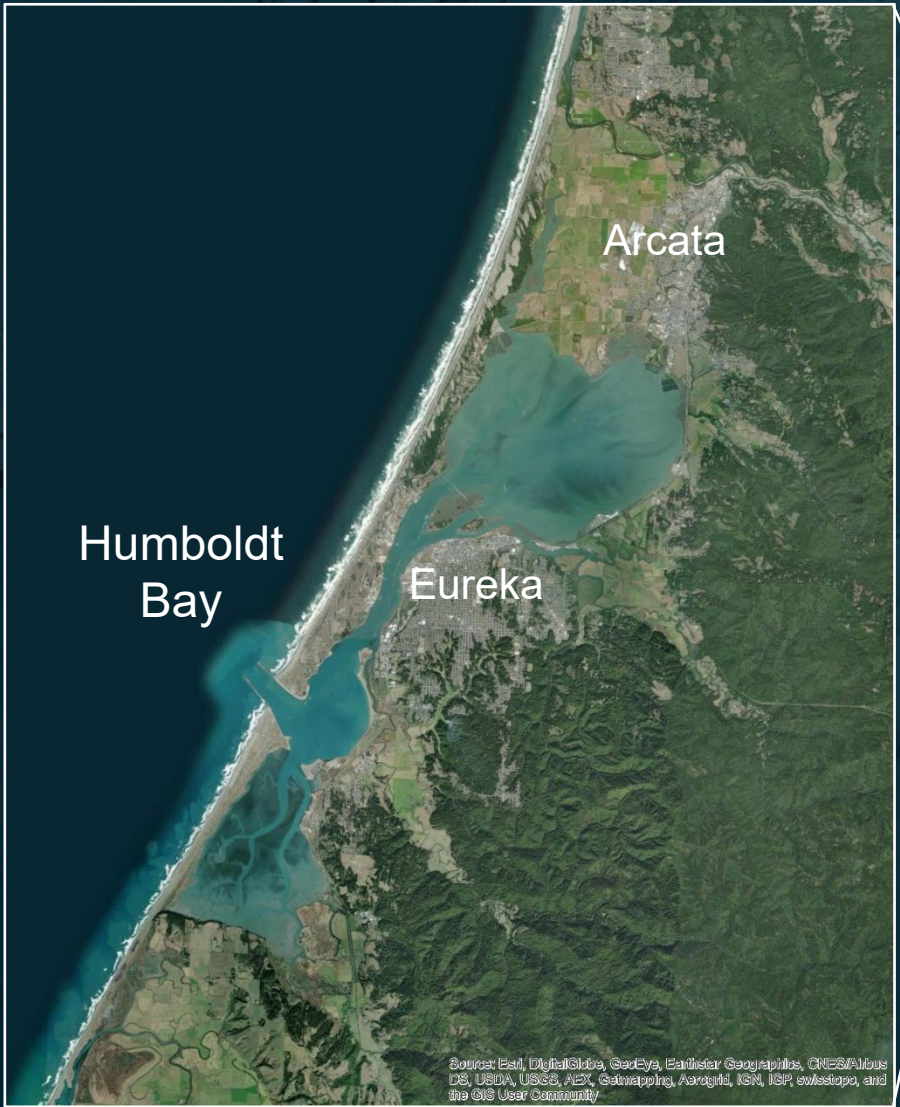


Humboldt Bay Living Shoreline Project

2024-2026



February 20, 2025



➔ NORTH

Table Bluff

Eureka

Arcata

Humboldt Bay



→ NORTH

Table Bluff

Eureka

Railroad

Arcata

Highway 101

Railroad

Highway 101

Humboldt Bay



→ NORTH

Table Bluff

Eureka

Railroad

Arcata

Highway 101

Railroad

Highway 101

Eureka Slough
Hydrographic Area

Humboldt Bay



Sea Level Rise Adaptation Plan for the Eureka Slough Hydrographic Area of Humboldt Bay (2018-2021)

- The planning area included transportation infrastructure, commercial and residential development, and agricultural lands situated on diked former tidelands
- Detailed hydraulic analysis included stillwater (tidal) flooding and effects of wind waves
- Vulnerability assessment organized around hazard scenarios
- Highlighted importance of salt marsh for attenuating wave energy and reducing erosion
- Informed subsequent projects and feasibility studies
- Primary funding: Caltrans Adaptation Planning Grant (\$425,000)





Humboldt Bay Trail South

- Project development began in 2012
- 4.25 miles of bikepath
- Construction 2023-2025
- 1.0 mile shoreline repairs (remove rails/ties, raise railroad embankment 1-2 feet in vulnerable area)
- 3 new bridges and major rehabilitation to 750-foot-long railroad bridge
- Pre-construction \$4 million
- Construction \$16 million
- Regional wetland mitigation
- Funding: ATP, State Coastal Conservancy, Caltrans



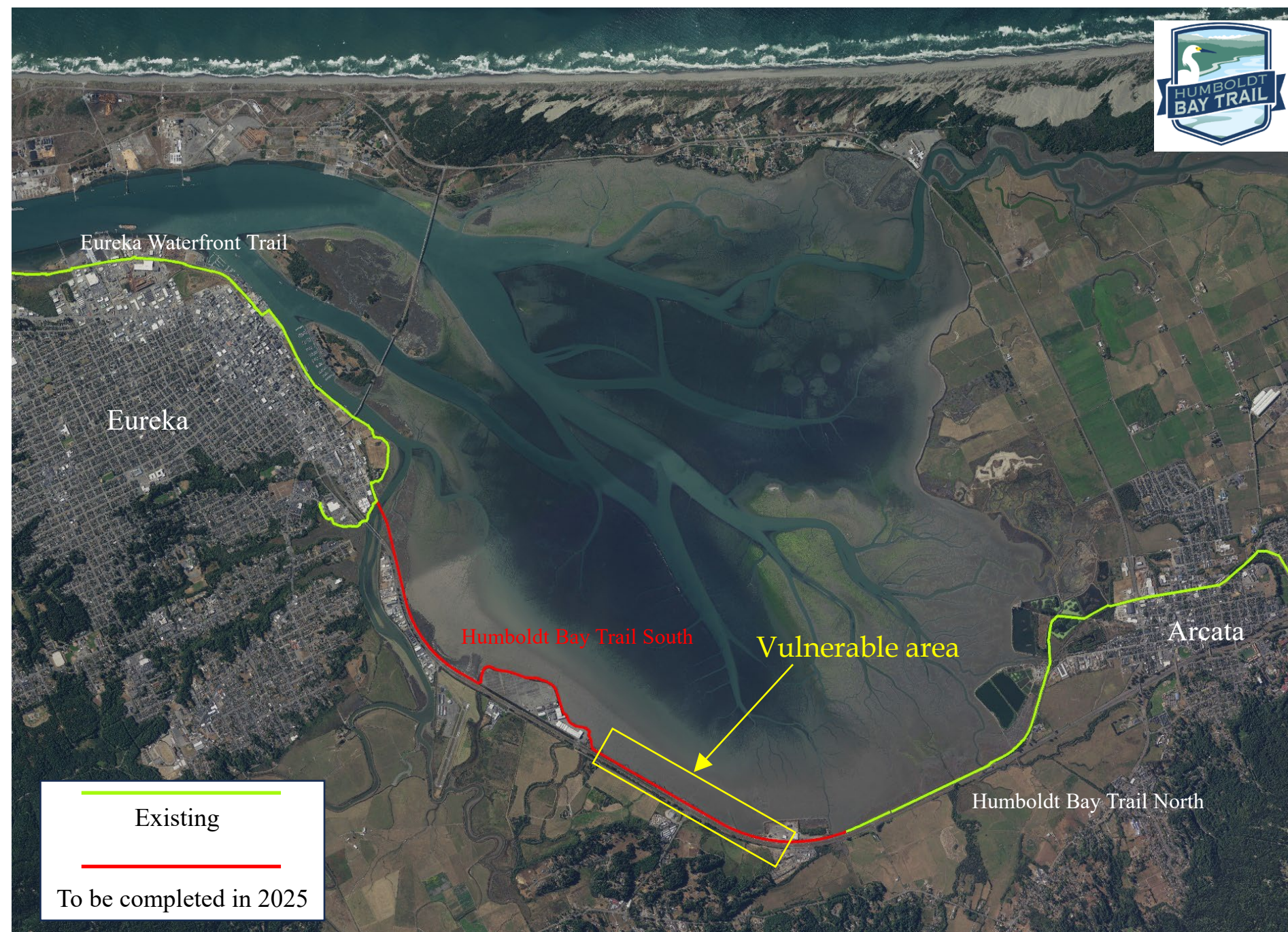
Existing
To be completed in 2025





Humboldt Bay Trail South

- Project development began in 2012
- 4.25 miles of bikepath
- Construction 2023-2025
- 1.0 mile shoreline repairs (remove rails/ties, raise railroad embankment 1-2 feet in vulnerable area)
- 3 new bridges and major rehabilitation to 750-foot-long railroad bridge
- Pre-construction \$4 million
- Construction \$16 million
- Regional wetland mitigation
- Funding: ATP, State Coastal Conservancy, Caltrans





Humboldt Bay Trail construction in progress

2018

Bracut Industrial Park

Brainard Mill Site



1870

Bracut Industrial Park

Brainard Mill Site

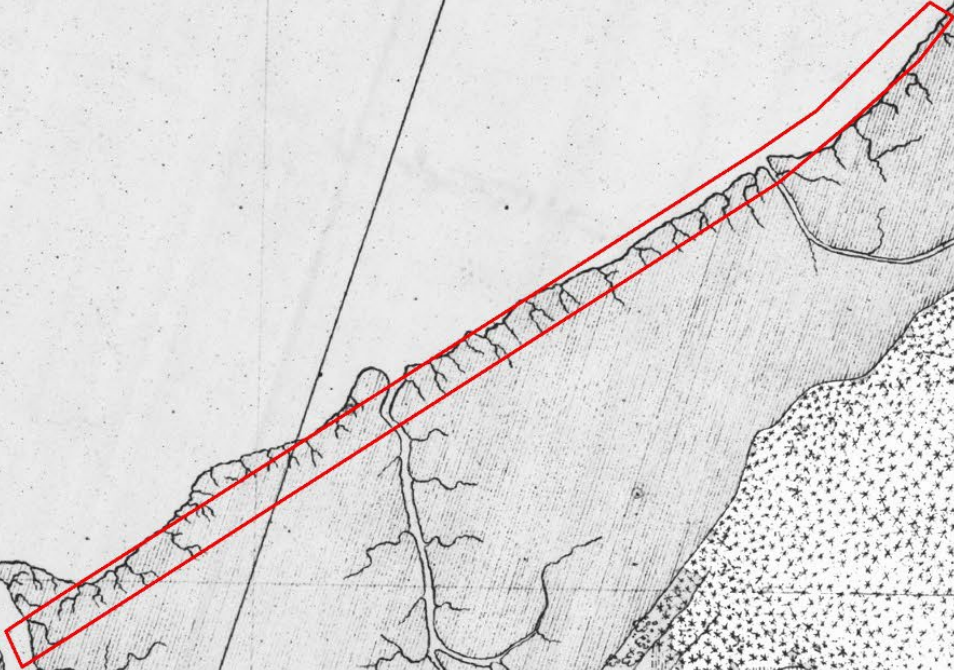


TABLE OF AREA
ETC

Miles of Area	Miles of Shore Line	Miles of Sloughs	Miles of Roads
11	8	34	8

Salt Marsh Creation Design Concept along Humboldt Bay Shoreline



Salt Marsh Creation Design Concept along Humboldt Bay Shoreline





Existing Conditions



Concept for Adaptation Project

- Initial feasibility study completed in 2022 (\$250,000 from NFWF/OPC)
- Advanced feasibility study, design, and CEQA analysis currently in progress (\$750,000 from Coastal Conservancy); next decision point in 2026
- For the full project, constructed features would create approximately 17 acres of salt marsh, extend approximately 175 feet from the shoreline
- A phased approach with a pilot study (demonstration project) may be preferred
- Current focus is evaluating the feasibility of using dredged sediment from elsewhere in the bay and identifying optimal construction methods