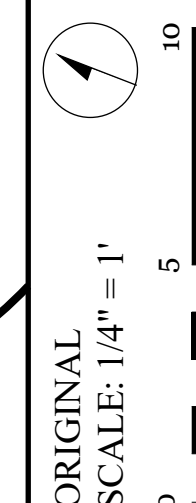




DESIGNER CONTACT INFORMATION



PROJECT TITLE AND SITE ADDRESS

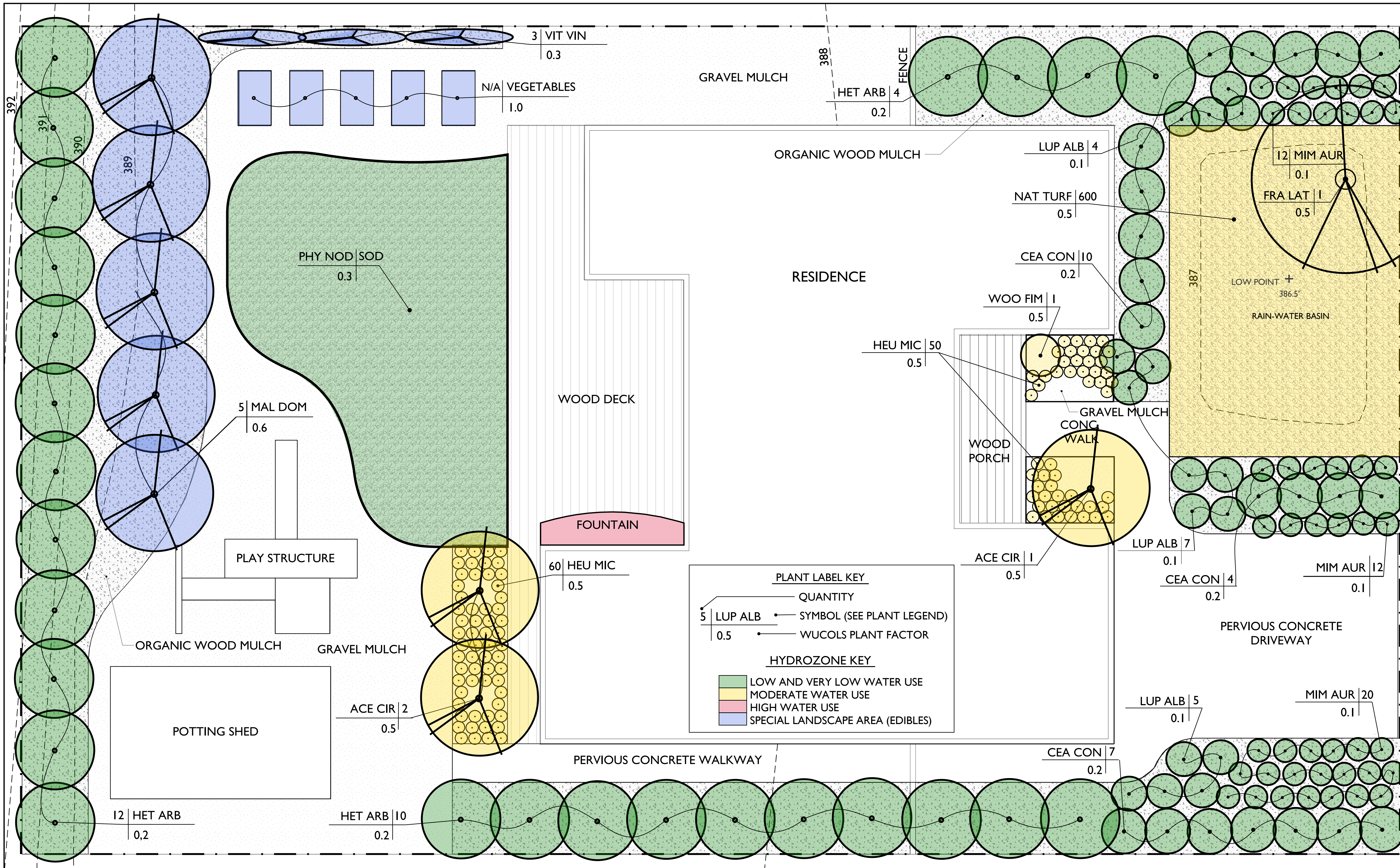
PLANTING AND HYDROZONE PLAN

DATE:

REVISIONS:

L

1.0





DESIGNER CONTACT
INFORMATION

PROJECT TITLE AND SITE ADDRESS

PLANT LEGEND, NOTES
AND DETAILS

DATE

REVISIONS:

L

1.1

SAMPLE PLANT LEGEND

(BOTANICAL NAME AND WATER USE DESIGNATION REQUIRED)

SYMBOL	BOTANICAL NAME	COMMON NAME	QUANTITY	SIZE	NOTES	WUCOLS
TREES:						
ACE CIR	ACER CIRCINATUM	VINE MAPLE	3	15 GAL.	NATIVE, MULTI-STEM	M
FRA LAT	FRAXINUS LATIFOLIA	OREGON ASH	1	24" BOX	NATIVE, STANDARD	M
MAL DOM	MALUS DOMESTICA 'FUJI'	FUJI APPLE	4	15 GAL.	EDIBLE, STANDARD	M
SHRUBS:						
CEA CON	CEANOTHUS CONCHA	MOUNTAIN LILAC	20	5 GAL.	NATIVE, REDUCED SUMMER WATER	L
HET ARB	HETEROMELES ALBUTIFOLIA	TOYON	16	5 GAL.	NATIVE, REDUCED SUMMER WATER	L
LUP ALB	LUPINUS ALBIFRONS	SILVER BUSH LUPINE	17	1 GAL.	NATIVE, REDUCED SUMMER WATER	VL
		STICKY MONKEY				
MIM AUR	MIMULUS AURANTIACUS	FLOWER	29	1 GAL.	NATIVE, REDUCED SUMMER WATER	VL
VIT VIN	VITIS CALIFORNICA 'RODGER'S RED'	WILD GRAPE	3	1 GAL.	NATIVE HYBRID	L
WOO FIM	WOODWARDIA FIMBRIATA	GIANT CHAIN FERN	1	5 GAL.	NATIVE	M
GROUNDCOVERS:						
HEU MAX	HEUCHERA MICRANTHA	CREVICE ALUM ROOT	110	4 INCH	NATIVE	M
PHY NOD	PHYLA NODIFLORA	KURAPIA	675 SF	SOD	NATIVE CULTIVAR	L
NAT TURF	F.OCCIDENTALLIS, F. RUBRA, F. IDAHOENSIS	NATIVE FESCUE BLEND	600 SF	SOD	NATIVE	L

SAMPLE NOTES

(REQUIRED MEASURES)

PLANTING

- 1) TURF IS LIMITED TO 25 PERCENT OF THE TOTAL IRRIGATED AREA (EXCEPT WHERE NON-RESIDENTIAL PLAY FIELDS ARE A PROGRAM REQUIREMENT) AND NOT PLANTED ON AREAS SLOPING MORE THAN 25 PERCENT.
- 2) PLANTINGS MUST BE GROUPED INTO HYDROZONES BASED ON MICROCLIMATE, SOIL TYPE, PLANT TYPE, AND WATER USE CLASSIFICATION (SEE WUCOLS: WWW.UCNR.EDU/SITES/WUCOLS/).

IRRIGATION

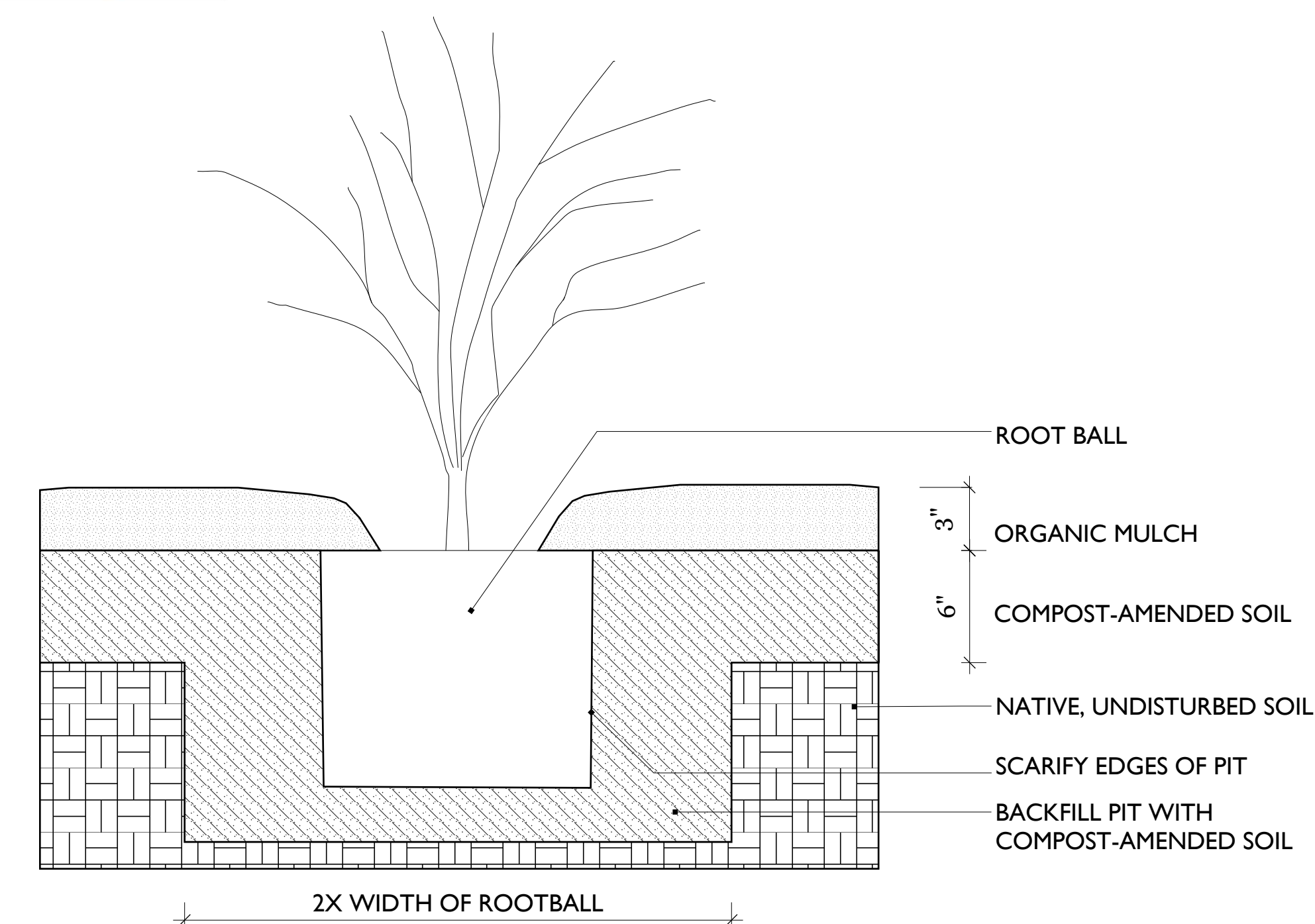
- 3) PRECIPITATION RATES MUST BE UNIFORM ACROSS EACH ZONE.
- 4) EMITTERS MUST BE FIXED RATE AND OF THE SAME TYPE WITHIN A ZONE. NO VARIABLE OR ADJUSTABLE FLOW RATE EMITTERS ARE ALLOWED. MIXING EMITTERS WITHIN A ZONE IS NOT ALLOWED.
- 5) OVERHEAD SPRAY IS NOT ALLOWED IN AREAS LESS THAN TEN FEET ACROSS IN ANY DIMENSION.
- 6) OVERHEAD SPRAY NOZZELS MUST BE SET BACK A MINIMUM OF TWO FEET FROM ADJACENT IMPERVIOUS SURFACES.

COMPOST

- 7) INCORPORATE COMPOST AT A RATE OF FOUR (4) CUBIC YARDS PER 1,000 SQUARE FEET INTO THE TOP SIX (6) INCHES OF SOIL OR COMPOST PER HORITICULTURAL SOIL REPORT RECOMMENDATIONS.

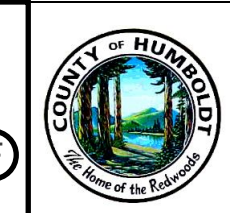
MULCH

- 8) APPLY ORGANIC MULCH TO A MINIMUM DEPTH OF THREE (3) INCHES ON ALL EXPOSED SOIL IN THE PLANTED AREA EXCEPT WHERE CONTRAINDICATED.

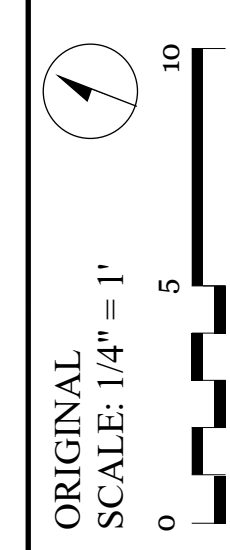


SAMPLE PLANTING DETAIL

NOT TO SCALE



DESIGNER CONTACT INFORMATION

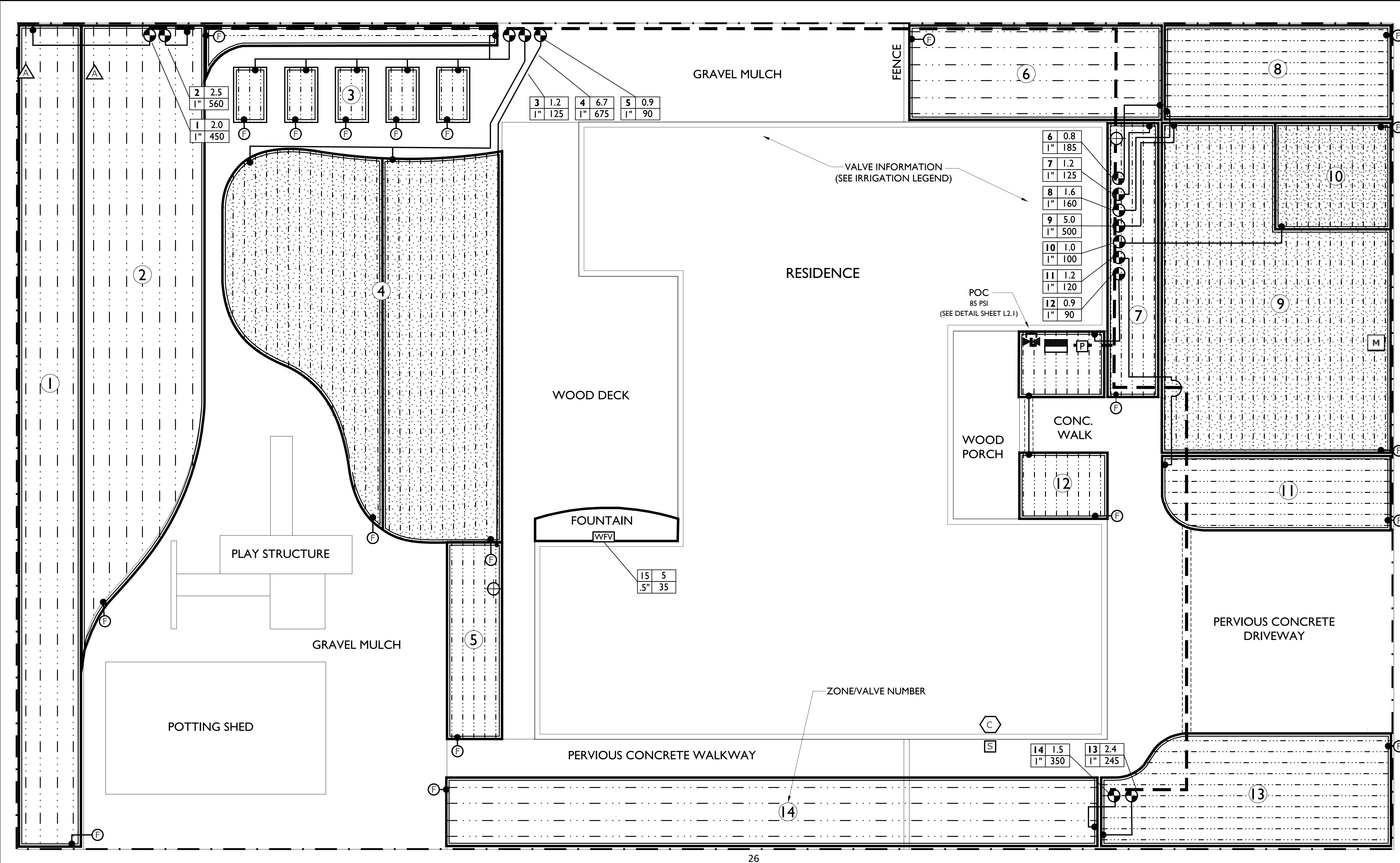


PROJECT TITLE AND SITE ADDRESS

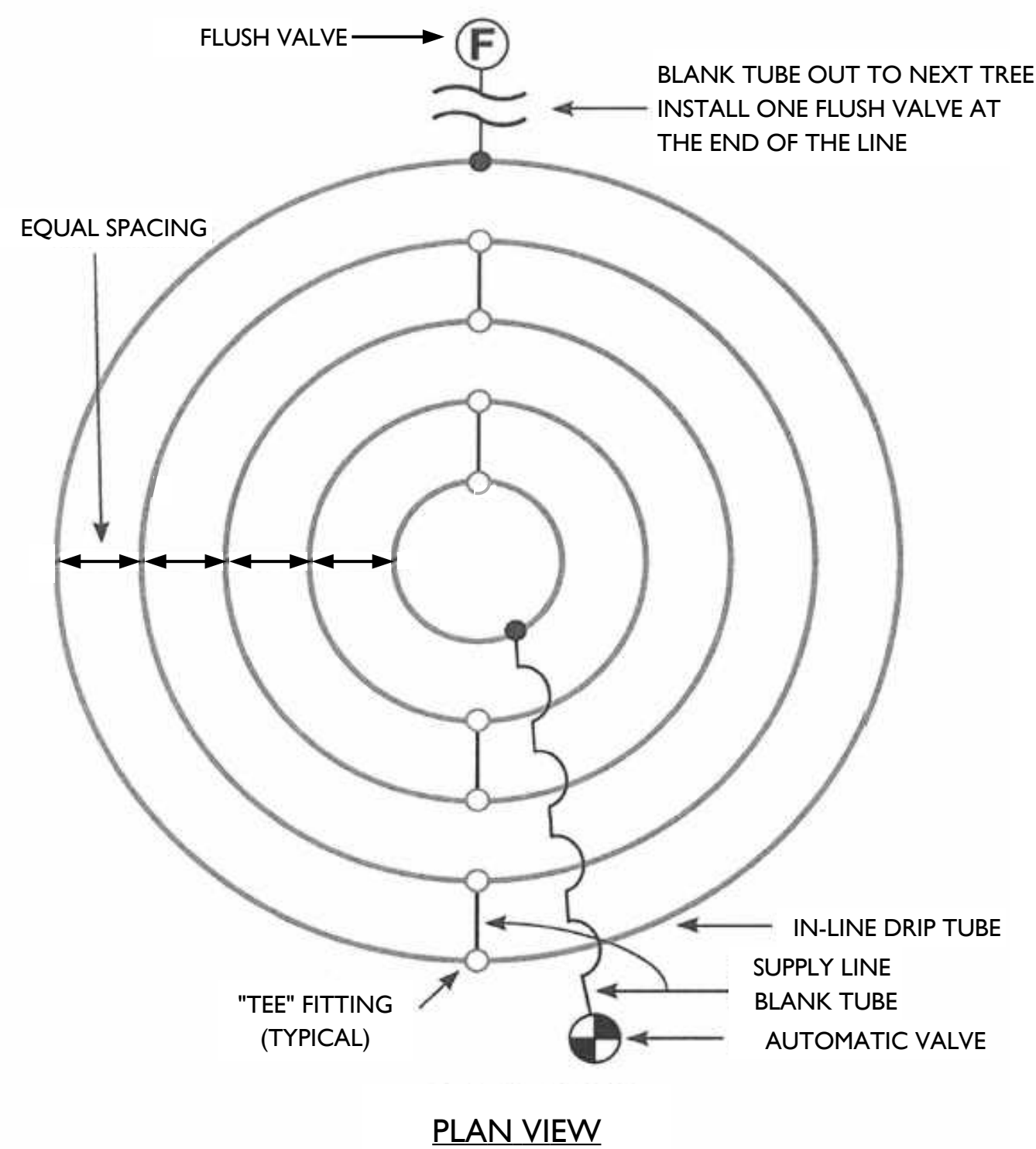
IRRIGATION PLAN

DATE:
REVISIONS:

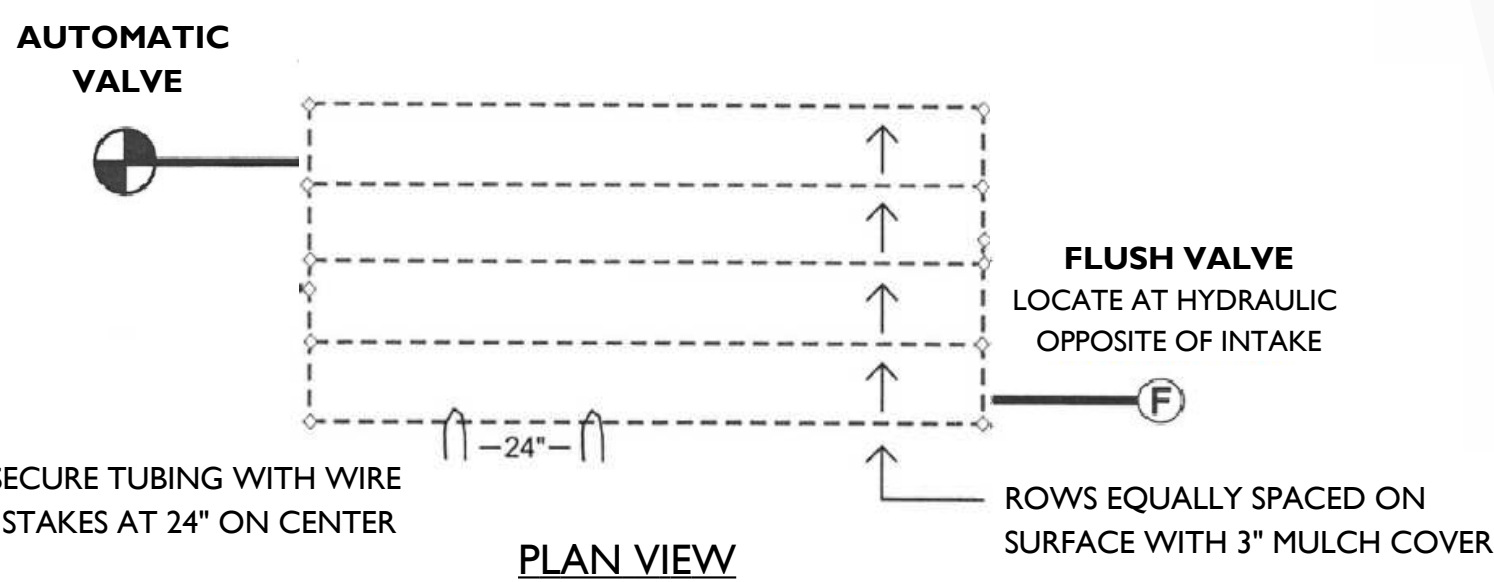
L
2.0



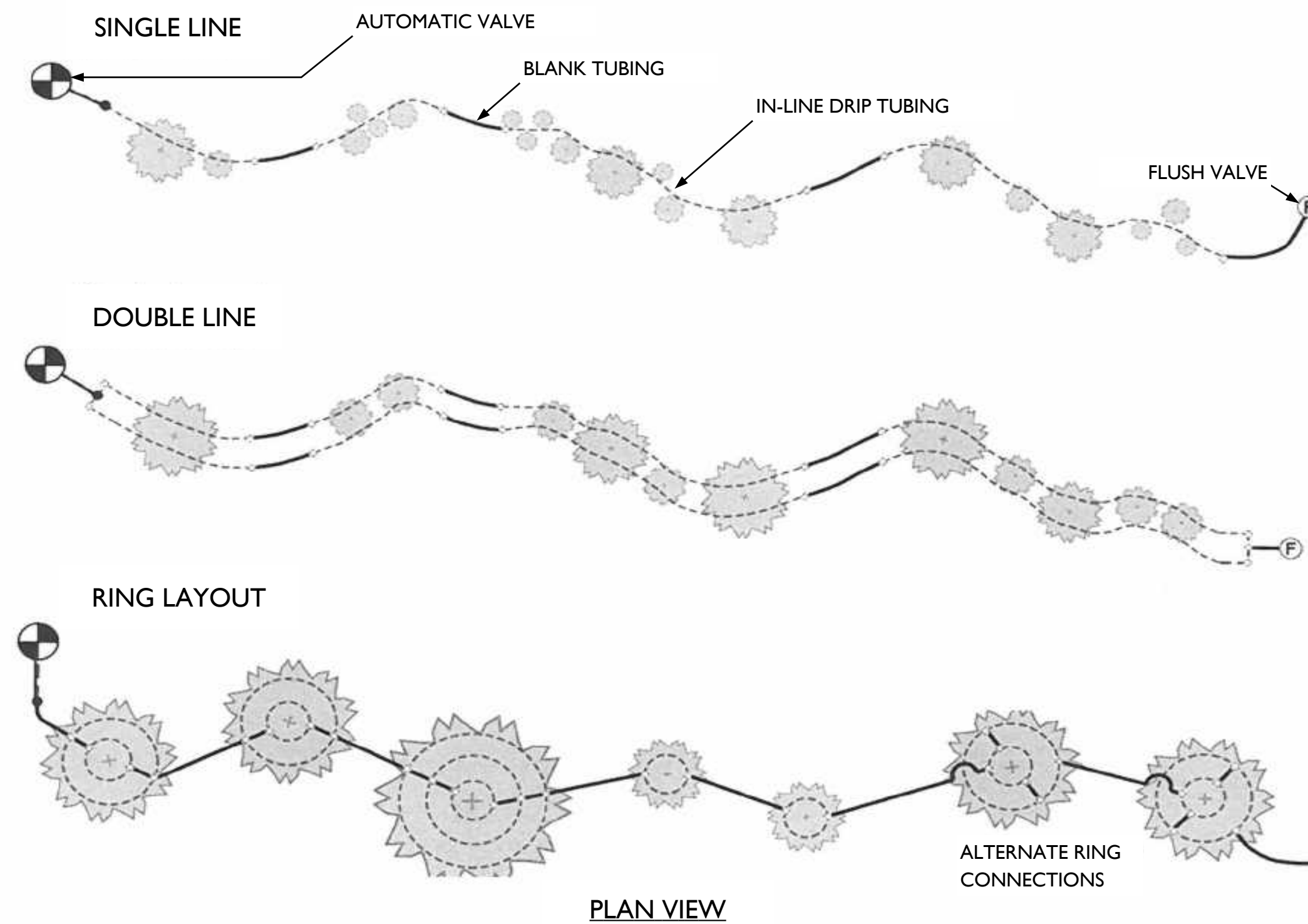
SAMPLE DRIP IRRIGATION DETAILS



IN-LINE DRIP RING LAYOUT



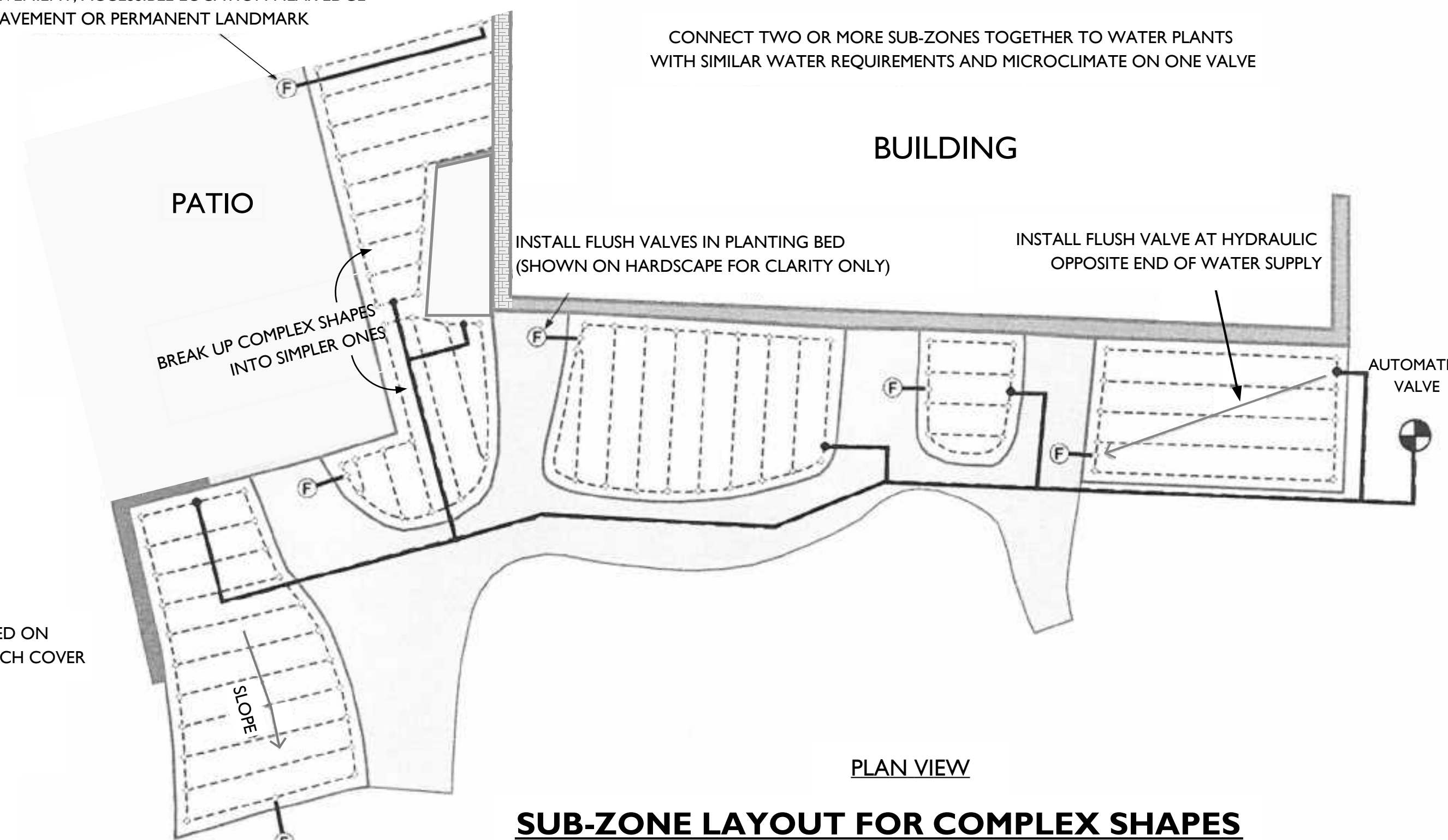
IN-LINE DRIP TUBING ZONE LAYOUT



IN-LINE DRIP SNAKE LAYOUTS

USE BLANK TUBING TO EXTEND FLUSH OUT TO
CONVENIENT, ACCESSIBLE LOCATION NEAR EDGE
OF PAVEMENT OR PERMANENT LANDMARK

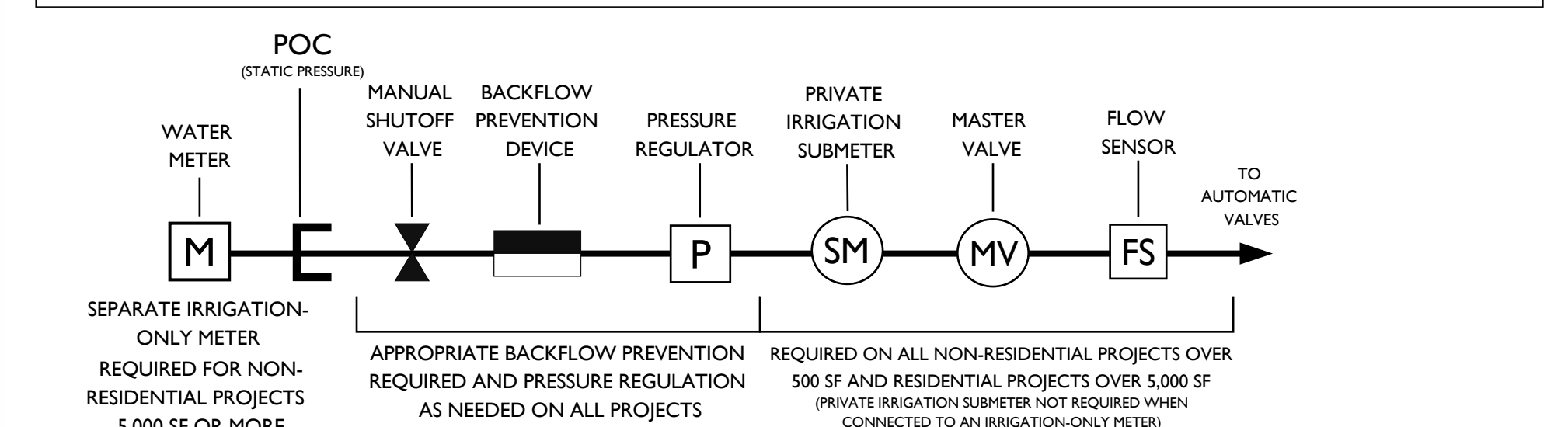
CONNECT TWO OR MORE SUB-ZONES TOGETHER TO WATER PLANTS
WITH SIMILAR WATER REQUIREMENTS AND MICROCLIMATE ON ONE VALVE



SUB-ZONE LAYOUT FOR COMPLEX SHAPES

SAMPLE IRRIGATION LEGEND (MAKE AND MODEL OF EACH COMPONENT REQUIRED)

SYMBOL	COMPONENT MAKE, MODEL, TYPE, AND DESCRIPTION
M	INSTALLED WATER METER
C	WEATHER-BASED, AUTOMATIC IRRIGATION CONTROLLER
S	RAIN (OR SOIL) SENSOR
POC (STATIC PRESSURE)	POINT OF CONNECTION AND STATIC PRESSURE
⊘	MANUAL BALL (OR GATE) VALVE
⊘	REDUCED PRESSURE BACKFLOW PREVENTION DEVICE (ANTI-SIPHON VALVES MAY BE SUBSTITUTED IF INSTALLED PROPERLY; DOUBLE CHECK VALVES ARE NOT ALLOWED)
P	PRESSURE REGULATOR (IF CONDITIONS REQUIRE)
⊘	AUTOMATIC VALVE
6 1.2 1" 185	VALVE/ZONE NUMBER FLOW RATE IN GALLONS PER MINUTE ZONE AREA IN SQUARE FEET VALVE SIZE
—	MAIN LINE DIAMETER AND TYPE
—	LATERAL LINE DIAMETER AND TYPE
- - -	SLEEVE DIAMETER AND TYPE
⊘	SURFACE 1/2" IN-LINE DRIP TUBING 0.6 GPH, 12" EMITTER SPACING, 12" ROW SPACING (MINIMUM SPACING RECOMMENDED FOR WELL DRAINED SOIL, RAISED BEDS AND STORMWATER TREATMENT FACILITIES)
⊘	SUB-SURFACE 1/2" IN-LINE DRIP TUBING 0.6 GPH, 12" EMITTER SPACING, 12" ROW SPACING (MINIMUM SPACING RECOMMENDED FOR WELL DRAINED SOIL, RAISED BEDS AND STORMWATER TREATMENT FACILITIES)
⊘	SURFACE 1/2" IN-LINE DRIP TUBING 0.6 GPH, 18" EMITTER SPACING, 18" ROW SPACING (MINIMUM SPACING RECOMMENDED FOR WELL DRAINED SOIL, RAISED BEDS AND STORMWATER TREATMENT FACILITIES)
F	FLUSH VALVE AND POP-UP DRIP ZONE INDICATOR
A	AIR VACUUM RELIEVE VALVE (IF CONDITIONS REQUIRE)
WFV	WATER FEATURE VALVE TYPE (I.E. FLOAT VALVE) AND FLOW RATE
⊘	HOSE BIB



TYPICAL IRRIGATION POINT OF CONNECTION



DESIGNER CONTACT INFORMATION

PROJECT TITLE AND SITE ADDRESS

IRRIGATION LEGEND, NOTES AND DETAILS

DATE:
REVISIONS:

L
2.1