



**Humboldt County
Department of Health and Human Services
Mental Health Branch**

**Mental Health Services Act
Community Services and Supports**

**Program and Expenditure Plan
Fiscal Year 2008/2009 Update**

Humboldt County Department of Health and Human Services Mental Health Branch

The purpose of this Program and Expenditure Plan Update is to request distribution of fiscal year 2008/2009 funds from the State Department of Mental Health for the Community Services and Supports (CSS) component of the Mental Health Services Act (MHSA). Contained in this Plan Update:

- MHSA background information
- Summary of CSS programs
- Fiscal year 2008/2009 Budget Worksheets for approved Work Plans
- Instructions for Public Comment

Extensive CSS program descriptions are available on the MHSA page of the Humboldt County website: co.humboldt.ca.us or can be requested by using the phone number or email contact information at the end of this document.

Background

Proposition 63 was passed in November 2004. It is now the Mental Health Services Act and became effective in January 2005. The Mental Health Services Act represents a comprehensive approach to the development of community based mental health services and supports for the residents of California.

The Act addresses a broad continuum of prevention, early intervention and service needs including the necessary infrastructure, technology and training elements that will effectively support the mental health system.

To provide for an orderly implementation of MHSA, the California Department of Mental Health (DMH) has planned for sequential phases of development for each of the components. Eventually all of these components will be integrated into comprehensive plans with a continuum from prevention and early intervention to comprehensive, intensive interventions for those in need.

The first component to be implemented was the Community Planning Process. Humboldt County conducted an extensive public planning process in 2005 that included six regional meetings, thirteen targeted stakeholder meetings, and advisory groups for each age group (children and youth, transition age youth, adult, and older adult). The Stakeholder and Advisory Group process and recommendations are available on the Humboldt County MHSA website.

The second component is the Community Services and Supports (CSS) component. The CSS includes those elements of the Act that define the requirements of service delivery to children, youth, adults and older adults with a diagnosis of serious emotional disturbance (SED) and/or serious mental illness (SMI).

As a result of the Community Planning Process and within the context of integrated services Humboldt County Department of Health and Human Services (DHHS) developed nine Community Services and Supports work plans. The nine work plans

were submitted to the State Department of Mental Health in December 2005. The work plans were approved and funds allocated effective April 2006 through June 2008. The subject of this Plan Update is for the distribution of fiscal year 2008/2009 funds for these previously approved work plans.

Community Services and Supports

Rural Outreach Services Enterprise (ROSE) provides mobile access to culturally appropriate services in the rural, remote, and outlying geographic areas of Humboldt County and in other nontraditional settings. ROSE links with and provides support to existing community organizations such as Family and Community Resource Centers, community clinics, and Tribal Organizations in order to reach the unserved and underserved populations in those areas of the county. ROSE serves all age groups including but not limited to people who are homeless and at-risk of homelessness. Efforts focus on reducing cultural and ethnic barriers to access that tend to exist in more traditional mental health settings.

The Hope Center (formerly the Wellness Center) provides a safe, welcoming environment based on recovery self-help principles and the resources necessary for people with a mental health diagnoses who are underserved and their families to be empowered in their efforts to be self sufficient. The Hope Center provides recovery services including peer-to-peer education and support, system navigation, and linkage to services. Outreach efforts are made by Hope Center peer staff and volunteers to underserved people with a mental health diagnosis.

Comprehensive Community Treatment (CCT) provides intensive community services and supports (e.g.: housing, medical, educational, social, vocational, rehabilitative, or other needed community services) as defined by the partner to achieve recovery. Personal Services Coordinators (PSCs), including peer clients and peer family members whenever possible, provide services to partners where the partner lives.

Outpatient Medication Services Expansion provides medication support to people with a serious mental illness residing in remote rural areas utilizing video conferencing equipment. It is a service strategy that will enhance existing collaborative efforts with primary health care providers.

Support to Transition Age Youth (TAY) Organization is a service strategy that will assist with policy and program development related to the provision of TAY services and supports; collaborate with and help to strengthen linkages; and conduct outreach activities that will be crucial to understanding the needs of this unique population.

Alternative Response Team (ART) Expansion is a creative collaboration of state initiatives including MHSA and a Child Welfare Improvement Activity. Initiated in 1996, the ART team is a collaboration between Child Welfare Services and Public Health to engage families by strengthening and preserving their capacity to protect and nurture their children. ART provides prevention services in the home for at-risk families with

children aged 0-8 years of age that were referred to CWS but did not meet the criteria for CWS intervention.

Older Adults and Dependent Adults Program provides in home services to disabled adults, at-risk adults and older adults. The enhanced adult services team expands an existing collaboration between Social Services, Adult Protective Services, In Home Support Services, Public Health Nursing, and a Mental Health Clinician to provide assessment and treatment planning to older and dependant adults with a serious mental illness who are at risk of abuse or neglect or who are in need of support services to remain in their home.

Crisis Intervention Services (CIS) staff responds to intervene and prevent hospitalizations and incarcerations. CIS provides crisis support during critical incidents or potential critical incidents involving persons who may have a mental illness or co-occurring disorder. Additional mental health staff will be added to current programs for the purpose of responding to local hospital emergency rooms to assess, engage, and refer clients to appropriate services and supports; and to develop more direct outreach, engagement, and access strategies. Crisis Intervention Team (CIT) is a national model where partnerships between law enforcement, mental health systems, clients of mental health services, and their family members can help in efforts to assist people who are experiencing a mental health crisis and to help them gain access to the treatment system where they are best served.

Integrated Program & Planning Support Structures is a further integration and expansion of a newly developed division at DHHS. To facilitate progress toward MHSA goals, Integrated Program & Planning Support Structures includes the following infrastructure enhancements:

- **The Office of Client & Cultural Diversity (OCCD)** provides cross-branch leadership to DHHS in the areas of policy and program development related to culturally competent client and family driven services and the reduction of racial, ethnic, and geographic disparities.
- **The Research and Evaluation (R&E) Unit** includes a full spectrum of evaluation services from data management, data verification, statistical analysis and interpretation, to written progress reports; increasing DHHS capacity for outcomes based program planning and improvement. These data offer a measure of how a program or service, overtime, affects the community.
- **The Training, Education and Supervision Unit (TES)** continues to build system capacity to develop, coordinate, and integrate resources to provide education and training opportunities to staff, clients, parents, families, community partners, and providers.

Exhibit 1
Community Services and Supports
FY 2008/09 Plan Update

COUNTY CERTIFICATION

I hereby certify that I am the official responsible for the administration of Community Mental Health Services in and for Humboldt County and that the following are true and correct:

This Community Services and Supports Plan Update is consistent with the Mental Health Services Act. This Plan Update is consistent with and supportive of the standards set forth in Title 9, California Code of Regulations (CCR) Section 3610 through 3650.

This Plan Update has been developed with the participation of stakeholders, in accordance with CCR Sections 3300, 3310, and 3315. The draft Plan Update was circulated for 30 days to stakeholders for review and comment. All input has been considered, with adjustments made, as appropriate.

Mental Health Services Act funds are and will be used in compliance with CCR Section 3410 of Title 9, Non-Supplant.

All documents in the attached Community Services and Supports Plan Update are true and correct.

Date: December 5, 2008 Signature: Karolyn Rose Steer RW
Local Mental Health Director

Executed at: Eureka, CA

County of Humboldt - Department of Health and Human Services -
Mental Health Branch
Mental Health Services Act (MHSA)
Community Services and Supports (CSS) Plan Update for
Fiscal Year 2008-09

The following budget worksheets report estimated expenditures and revenues for the past fiscal year 2007-08 as well as proposed budget estimates of expenditures and revenues for FY 2008-09. For fiscal year 2007-08, reported expenditures may not reflect a full year of costs due to programs' implementation during the course of the fiscal year and salary savings from vacant and/or unfilled staff positions.

For fiscal year 2008-09, general cost increases include a Board of Supervisors approved 6% salary cost of living adjustment for all staff. Benefit costs computed from salaries have increased comparatively. Other general cost increases have been included in the FY 2008-09 budget for transportation, utilities, and client, family member and caregiver support expenditures.

Personnel expenditures estimated for FY 2008-09 include costs for fully implemented MHSA CSS work plans. To the extent that funding is available, additional staff will be added to work plans in proportion to the service needs identified. Specific personnel expenditure budget increases for approved work plans include the following staff allocations approved by the Board of Supervisors:

Rural Outreach Services Enterprise (ROSE)

At full implementation, *ROSE* will provide traditional professional staff as well as peer client and/or peer family member Mental Health Aides, all of whom will be trained and mentored in the concepts of wellness, recovery, and resiliency. Additional personnel included for the *ROSE* program FY 2008-09 budget estimates are: 2.0 FTE Program Coordinators, Mental Health Clinician, Mental Health Worker, Psychiatric Nurse, Mental Health Aides, and Office Assistant. Estimated salary and benefit cost associated with these additional positions is \$329,757.

HOPE Wellness Center

The HOPE Center is staffed by client and family members who will receive ongoing training and mentoring in order to ensure that the values of wellness, recovery and resiliency will be promoted and reinforced. In fiscal year 2008-09, three half-time Mental Health Aide positions have been newly allocated for positions in the HOPE Center. Estimated salary and benefit cost associated with these additional positions is \$70,660.

Comprehensive Community Treatment (CCT)

The Full Service Partnership *Comprehensive Community Treatment (CCT)* team provides community services and supports as defined by the partner to achieve recovery. Personal Service Coordinators, including peer clients and peer family members whenever possible, provide services to partners where the partner lives. For FY 2008-09, additional staff will be added to the CCT program in proportion to the needs identified by partners. Additional personnel included for FY 2008-09 budget estimates are: 2.0 FTE Personal Service Coordinators, 2.80 FTE Psychiatric Nurses, 1.0 FTE Psychiatric Mid-Level Practitioner, Consumer Liaison, Family Liaison, and Sr. Program Manager. Estimated salary and benefit cost associated with these additional positions is \$477,323.

Outpatient Medication Services

To further enhance existing *Outpatient Medication Services expansion* program, the FY 2008-09 budget estimates include \$106,211 for the addition of 1.0 FTE Psychiatric Mid-Level Practitioner, and Assistant Director of Nursing.

Crisis Intervention Services

Crisis Intervention Services expansion provides outreach, engagement, linkage, and referral services. This service enables staff to respond to crisis and pre-crisis situations in order to intervene and prevent hospitalizations, incarcerations, and/or death. The FY 2008-09 budget estimates include the addition of personnel in Mental Health Clinician and Case Manager positions. Additional expenditure estimate is \$86,714

Non-recurring expenditures totaling \$92,868 are included in the FY 2008-09 CSS plan update. Descriptions of these expenditures are:

Rural Outreach Services Enterprise (ROSE)

2 Personal Computers @ \$1,652 each.

Comprehensive Community Treatment (CCT)

3 vehicles, two full size, one compact, for provision of services to clients \$78,000. 3 Personal Computers @ \$1,652 each.

Outpatient Medication Services

2 Personal Computers @ \$1,652 each.

Crisis Intervention Services

2 Personal Computers @ \$1,652 each.

Administration Budget

The administration budget for FY 2008-09 includes the same general cost increases as CSS workplans: Board of Supervisors approved 6% salary cost of living adjustment for staff and comparative increases in benefit costs computed from salaries. Non-recurring expenditures totaling \$3,304 are included for purchase of two personal computers.

FY 2008/09 Mental Health Services Act Community Services and Supports Summary Workplan Listing

County: HUMBOLDT

Date: 9/17/2008

Workplans			Total Funds Requested					Funds Requested by Age Group			
No.	Name	New (N)/ Approved Existing (E)	Full Service Partnerships (FSP)	System Development	Outreach and Engagement	Total Request	Children, Youth, Families	Transition Age Youth	Adult	Older Adult	
1.	Rural Outreach Services Enterprise (ROSE)	E		\$708,234	\$105,946	\$814,180	\$44,735	\$67,103	\$653,134	\$49,209	
2.	Wellness Center	E		\$175,764	\$11,800	\$187,564	\$37,513	\$37,513	\$75,025	\$37,513	
3.	Comprehensive Community Treatment (CCT)	E	\$1,795,524			\$1,795,524	\$110,494	\$110,494	\$1,408,795	\$165,741	
4.	Outpatient Medication Services	E		\$238,415	\$2,201	\$240,617	\$17,394	\$34,788	\$171,041	\$17,394	
5.	Support to Transition-Age Youth Organizations	E		\$38,500	\$15,750	\$54,250		\$54,250			
6.	Alternative Response Team Cross-Branch Program	E		-\$25,099	\$16,873	-\$8,226	-\$9,859	\$1,633			
7.	Older and Dependent Adults Program	E		\$69,308	\$62,394	\$131,702			\$67,093	\$64,608	
8.	Crisis Intervention Services Expansion	E		\$70,248	\$52,675	\$122,923		\$18,438	\$92,192	\$12,292	
9.	Integrated Program & Planning Support Structures	E		\$241,728		\$241,728					
26.	Subtotal: Workplans^{a/}		\$1,795,524	\$1,517,097	\$267,640	\$3,580,261	\$60,432	\$24,173	\$132,951	\$24,173	
27.	Optional 10% Operating Reserve^{b/}						\$260,709	\$348,391	\$2,600,231	\$370,930	
28.	CSS Administration^{c/}					\$542,225					
29.	CSS Capital Facilities Projects^{d/}										
30.	CSS Technological Needs Projects^{d/}										
31.	CSS Workforce Education and Training^{d/}										
32.	CSS Prudent Reserve^{d/}										
33.	Total Funds Requested					\$4,122,485					

50.15%

a/ Majority of funds must be directed towards FSPs (Title 9, California Code of Regulations Section 3620(c)). Percent of Funds directed towards FSP=5
 b/ Cannot exceed 10% of line 26.
 c/ Complete Exhibit 5a.
 d/ Complete budget pages from relevant guidelines for each component.
 e/ Complete Exhibit 4.

Exhibit 3R

Mental Health Services Act Community Services and Supports Funding Request for FY 2008/09

Date: 9/17/2008

County: HUMBOLDT

	Use of Funds	Source of Funds
Total FY 2008/09 Funds Requested from line 33 of Exhibit 2	\$ 4,122,485	
		FY 06/07 CSS Unapproved Planning Estimates
		FY 07/08 CSS Unapproved Planning Estimates
	\$ 2,553,400	FY 08/09 CSS Planning Estimates*
	\$ 1,569,085	Unspent CSS Funds (Cash on Hand)
Total	\$ 4,122,485	\$ 4,122,485

* Funds requested for lines 29, 30 and 31 on Exhibit 2 must be funded from the FY 08/09 CSS Planning Estimate.

FY 2008/09 Mental Health Services Act Community Services and Supports
Administration Budget Worksheet

County: Humboldt

Fiscal Year: 2008-09

Date: 9/17/2008

	Estimated FY 2007/08 Expenditures and Revenues	Estimated FY 2008/09 Expenditures and Revenues
A. Expenditures		
1. Personnel Expenditures		
a. MHSA Coordinator(s)	\$62,082	\$77,525
b. MHSA Support Staff	\$53,924	\$110,582
c. Other Personnel (list below)		
i. Financial services	\$16,208	\$11,402
ii. Medical Records	\$29,026	\$31,409
iii.		
iv.		
v.		
vi.		
vii.		
d. Total Salaries	\$161,238	\$230,918
e. Employee Benefits	\$52,774	\$109,244
f. Total Personnel Expenditures	\$214,012	\$340,162
2. Operating Expenditures	\$42,562	\$72,353
3. County Allocated Administration		
a. Countywide Administration (A-87)	\$22,500	\$50,128
b. Other Administration (provide description in budget narrative)	\$37,351	\$76,277
c. Total County Allocated Administration	\$59,851	\$126,405
4. Total Proposed County Administration Budget	\$316,425	\$538,921
B. Revenues		
1. New Revenues		
a. Medi-Cal (FFP only)		\$0
b. Other Revenue		\$0
2. Total Revenues	\$0	\$0
C. Non-Recurring Expenditures		\$3,304
D. Total County Administration Funding Requirements	\$316,425	\$542,225

COUNTY CERTIFICATION

I HEREBY CERTIFY under penalty of perjury that I am the official responsible for the administration of Community Mental Health Services in and for said County; that I have not violated any of the provisions of Section 5891 of the Welfare and Institution C

Date: 12/1/08

Signature

Karyn Pleasance

Local Mental Health Director or Designee

Executed at

Eureka CA

California

**FY 2008/09 Mental Health Services Act Community Services and Supports Budget Worksheet-
Approved Workplans**

County: Humboldt

Fiscal Year: 2008-09

Program Workplan # 1

Date: 9/17/2008

Program Workplan Name Rural Outreach Services Enterprise (ROSE)

Page 1 of 16

Type of Funding 2. System Development

Months of Operation 12

Proposed Total Client Capacity of Program/Service: 265

Existing Client Capacity of Program/Service: 173

Prepared by: Melissa Chilton

Client Capacity of Program/Service Expanded through MHSA: 92

Telephone Number: (707) 441-5446

	Estimated FY 2007/08 Expenditures and Revenues	Estimated FY 2008/09 Expenditures and Revenues
A. Expenditures		
1. Client, Family Member and Caregiver Support Expenditures		
a. Housing	\$45,500	\$58,500
b. Other Supports		
2. Personnel Expenditures	\$226,157	\$717,565
3. Operating Expenditures	\$103,811	\$195,008
4. Program Management		
5. Estimated Total Expenditures when service provider is not known		
6. Non-recurring expenditures	\$204,707	\$3,304
7. Total Proposed Program Budget	\$580,175	\$974,377
B. Revenues		
1. Existing Revenues		
2. New Revenues		
a. Medi-Cal (FFP only)	\$35,751	\$197,069
b. State General Funds	\$3,030	\$69,074
c. Other Revenue		
d. Total New Revenue	\$38,780	\$266,143
3. Total Revenues	\$38,780	\$266,143
C. Total Funding Requirements	\$541,395	\$708,234

**FY 2008/09 Mental Health Services Act Community Services and Supports Budget Worksheet-
Approved Workplans**

County: Humboldt Fiscal Year: 2008-09
 Program Workplan #: 1 Date: 9/17/2008
 Program Workplan Name: Rural Outreach Services Enterprise (ROSE) Page 2 of 16
 Type of Funding: 3. Outreach and Engagement Months of Operation: 12
 Proposed Total Client Capacity of Program/Service: 65
 Existing Client Capacity of Program/Service: 0 Prepared by: Melissa Chilton
 Client Capacity of Program/Service Expanded through MHSA: 65 Telephone Number: (707) 441-5446

	Estimated FY 2007/08 Expenditures and Revenues	Estimated FY 2008/09 Expenditures and Revenues
A. Expenditures		
1. Client, Family Member and Caregiver Support Expenditures		
a. Housing		
b. Other Supports		\$2,724
2. Personnel Expenditures	\$23,066	\$88,078
3. Operating Expenditures	\$17,217	\$15,144
4. Program Management		
5. Estimated Total Expenditures when service provider is not known		
6. Non-recurring expenditures		
7. Total Proposed Program Budget	\$40,283	\$105,946
B. Revenues		
1. Existing Revenues		
2. New Revenues		
a. Medi-Cal (FFP only)		
b. State General Funds		
c. Other Revenue		
d. Total New Revenue	\$0	\$0
3. Total Revenues	\$0	\$0
C. Total Funding Requirements	\$40,283	\$105,946

**FY 2008/09 Mental Health Services Act Community Services and Supports Budget Worksheet-
Approved Workplans**

County: Humboldt
 Program Workplan # 2
 Program Workplan Name Wellness Center
 Type of Funding 2. System Development
 Proposed Total Client Capacity of Program/Service: 600
 Existing Client Capacity of Program/Service: 460
 Client Capacity of Program/Service Expanded through MHSA: 140

Fiscal Year: 2008-09
 Date: 9/17/2008
 Page 3 of 16
 Months of Operation 12
 Prepared by: Melissa Chilton
 Telephone Number: (707) 441-5446

	Estimated FY 2007/08 Expenditures and Revenues	Estimated FY 2008/09 Expenditures and Revenues
A. Expenditures		
1. Client, Family Member and Caregiver Support Expenditures		
a. Housing		
b. Other Supports		
2. Personnel Expenditures	\$72,280	\$127,872
3. Operating Expenditures	\$35,492	\$47,892
4. Program Management		
5. Estimated Total Expenditures when service provider is not known		
6. Non-recurring expenditures	\$91,180	
7. Total Proposed Program Budget	\$198,952	\$175,764
B. Revenues		
1. Existing Revenues		
2. New Revenues		
a. Medi-Cal (FFP only)		
b. State General Funds		
c. Other Revenue		
d. Total New Revenue	\$0	\$0
3. Total Revenues	\$0	\$0
C. Total Funding Requirements	\$198,952	\$175,764

**FY 2008/09 Mental Health Services Act Community Services and Supports Budget Worksheet-
Approved Workplans**

County: Humboldt
 Program Workplan # 2
 Program Workplan Name Wellness Center
 Type of Funding 3. Outreach and Engagement
 Proposed Total Client Capacity of Program/Service: 150
 Existing Client Capacity of Program/Service: 72
 Client Capacity of Program/Service Expanded through MHSA: 78

Fiscal Year: 2008-09
 Date: 9/17/2008
 Page 4 of 16
 Months of Operation 12
 Prepared by: Melissa Chilton
 Telephone Number: (707) 441-5446

	Estimated FY 2007/08 Expenditures and Revenues	Estimated FY 2008/09 Expenditures and Revenues
A. Expenditures		
1. Client, Family Member and Caregiver Support Expenditures		
a. Housing		
b. Other Supports		\$11,800
2. Personnel Expenditures		\$0
3. Operating Expenditures		
4. Program Management		
5. Estimated Total Expenditures when service provider is not known		
6. Non-recurring expenditures		
7. Total Proposed Program Budget	\$0	\$11,800
B. Revenues		
1. Existing Revenues		
2. New Revenues		
a. Medi-Cal (FFP only)		
b. State General Funds		
c. Other Revenue		
d. Total New Revenue	\$0	\$0
3. Total Revenues	\$0	\$0
C. Total Funding Requirements	\$0	\$11,800

**FY 2008/09 Mental Health Services Act Community Services and Supports Budget Worksheet-
Approved Workplans**

County: Humboldt Fiscal Year: 2008-09
 Program Workplan # 3 Date: 9/17/2008
 Program Workplan Name Comprehensive Community Treatment (CCT) Page 5 of 16
 Type of Funding 1. Full Service Partnership Months of Operation 12
 Proposed Total Client Capacity of Program/Service: 95
 Existing Client Capacity of Program/Service: 31 Prepared by: Melissa Chilton
 Client Capacity of Program/Service Expanded Through MHSA: 64 Telephone Number: (707) 441-5446

	Estimated FY 2007/08 Expenditures and Revenues	Estimated FY 2008/09 Expenditures and Revenues
A. Expenditures		
1. Client, Family Member and Caregiver Support Expenditures		
a. Housing	\$82,974	\$405,824
b. Other Supports		\$80,137
2. Personnel Expenditures	\$766,338	\$1,503,255
3. Operating Expenditures	\$197,053	\$357,704
4. Program Management		
5. Estimated Total Expenditures when service provider is not known		
6. Non-recurring expenditures		\$82,956
7. Total Proposed Program Budget	\$1,046,365	\$2,429,876
B. Revenues		
1. Existing Revenues		
2. New Revenues		
a. Medi-Cal (FFP only)	\$219,318	\$601,912
b. State General Funds		\$0
c. Other Revenue		\$32,441
d. Total New Revenue	\$219,318	\$634,353
3. Total Revenues	\$219,318	\$634,353
C. Total Funding Requirements	\$827,047	\$1,795,524

**FY 2008/09 Mental Health Services Act Community Services and Supports Budget Worksheet-
Approved Workplans**

County: Humboldt Fiscal Year: 2008-09
 Program Workplan #: 4 Date: 9/17/2008
 Program Workplan Name: Outpatient Medication Services Page 6 of 16
 Type of Funding 2. System Development Months of Operation 12
 Proposed Total Client Capacity of Program/Service: 2,520
 Existing Client Capacity of Program/Service: 2,380 Prepared by: Melissa Chilton
 Client Capacity of Program/Service Expanded through MHSA: 140 Telephone Number: (707) 441-5446

	Estimated FY 2007/08 Expenditures and Revenues	Estimated FY 2008/09 Expenditures and Revenues
A. Expenditures		
1. Client, Family Member and Caregiver Support Expenditures		
a. Housing		
b. Other Supports		
2. Personnel Expenditures	\$92,788	\$303,198
3. Operating Expenditures	\$28,730	\$11,443
4. Program Management		
5. Estimated Total Expenditures when service provider is not known		
6. Non-recurring expenditures		\$3,304
7. Total Proposed Program Budget	\$121,518	\$317,945
B. Revenues		
1. Existing Revenues		
2. New Revenues		
a. Medi-Cal (FFP only)	\$11,863	\$79,530
b. State General Funds		\$0
c. Other Revenue		
d. Total New Revenue	\$11,863	\$79,530
3. Total Revenues	\$11,863	\$79,530
C. Total Funding Requirements	\$109,655	\$238,415

**FY 2008/09 Mental Health Services Act Community Services and Supports Budget Worksheet-
Approved Workplans**

County: Humboldt Fiscal Year: 2008-09
 Program Workplan #: 4 Date: 9/17/2008
 Program Workplan Name: Outpatient Medication Services Page 7 of 16
 Type of Funding: 3. Outreach and Engagement Months of Operation: 12
 Proposed Total Client Capacity of Program/Service: 150
 Existing Client Capacity of Program/Service: 77 Prepared by: Melissa Chilton
 Client Capacity of Program/Service Expanded through MHSA: 73 Telephone Number: (707) 441-5446

	Estimated FY 2007/08 Expenditures and Revenues	Estimated FY 2008/09 Expenditures and Revenues
A. Expenditures		
1. Client, Family Member and Caregiver Support Expenditures		
a. Housing		
b. Other Supports		
2. Personnel Expenditures	\$2,164	\$58,353
3. Operating Expenditures	\$670	\$1,688
4. Program Management		
5. Estimated Total Expenditures when service provider is not known		
6. Non-recurring expenditures		
7. Total Proposed Program Budget	\$2,834	\$60,041
B. Revenues		
1. Existing Revenues		
2. New Revenues		
a. Medi-Cal (FFP only)		
b. State General Funds		\$57,840
c. Other Revenue		
d. Total New Revenue	\$0	\$57,840
3. Total Revenues	\$0	\$57,840
C. Total Funding Requirements	\$2,834	\$2,201

**FY 2008/09 Mental Health Services Act Community Services and Supports Budget Worksheet-
Approved Workplans**

County: Humboldt

Fiscal Year: 2008-09

Program Workplan # 5

Date: 9/17/2008

Program Workplan Name Support to Transition-Age Youth Organizations

Page 8 of 16

Type of Funding 2. System Development

Months of Operation 12

Proposed Total Client Capacity of Program/Service: 30

Existing Client Capacity of Program/Service: 0

Prepared by: Melissa Chilton

Client Capacity of Program/Service Expanded through MHSA: 30

Telephone Number: (707) 441-5446

	Estimated FY 2007/08 Expenditures and Revenues	Estimated FY 2008/09 Expenditures and Revenues
A. Expenditures		
1. Client, Family Member and Caregiver Support Expenditures		
a. Housing		
b. Other Supports		
2. Personnel Expenditures	\$0	\$0
3. Operating Expenditures	\$0	\$38,500
4. Program Management		
5. Estimated Total Expenditures when service provider is not known		
6. Non-recurring expenditures		
7. Total Proposed Program Budget	\$0	\$38,500
B. Revenues		
1. Existing Revenues		
2. New Revenues		
a. Medi-Cal (FFP only)		
b. State General Funds		
c. Other Revenue		
d. Total New Revenue	\$0	\$0
3. Total Revenues	\$0	\$0
C. Total Funding Requirements	\$0	\$38,500

**FY 2008/09 Mental Health Services Act Community Services and Supports Budget Worksheet-
Approved Workplans**

County: Humboldt Fiscal Year: 2008-09
 Program Workplan # 5 Date: 9/17/2008
 Program Workplan Name Support to Transition-Age Youth Organizations Page 9 of 16
 Type of Funding 3. Outreach and Engagement Months of Operation 12
 Proposed Total Client Capacity of Program/Service: 15
 Existing Client Capacity of Program/Service: 0 Prepared by: Melissa Chilton
 Client Capacity of Program/Service Expanded Through MHSA: 15 Telephone Number: (707) 441-5446

	Estimated FY 2007/08 Expenditures and Revenues	Estimated FY 2008/09 Expenditures and Revenues
A. Expenditures		
1. Client, Family Member and Caregiver Support Expenditures		
a. Housing		
b. Other Supports		\$15,750
2. Personnel Expenditures		\$0
3. Operating Expenditures		
4. Program Management		
5. Estimated Total Expenditures when service provider is not known		
6. Non-recurring expenditures		
7. Total Proposed Program Budget	\$0	\$15,750
B. Revenues		
1. Existing Revenues		
2. New Revenues		
a. Medi-Cal (FFP only)		
b. State General Funds		
c. Other Revenue		
d. Total New Revenue	\$0	\$0
3. Total Revenues	\$0	\$0
C. Total Funding Requirements	\$0	\$15,750

**FY 2008/09 Mental Health Services Act Community Services and Supports Budget Worksheet-
Approved Workplans**

County: Humboldt Fiscal Year: 2008-09
 Program Workplan # 6 Date: 9/17/2008
 Program Workplan Name Alternative Response Team Cross-Branch Program Page 10 of 16
 Type of Funding 2. System Development Months of Operation 12
 Proposed Total Client Capacity of Program/Service: 600
 Existing Client Capacity of Program/Service: 500 Prepared by: Melissa Chilton
 Client Capacity of Program/Service Expanded through MHSA: 100 Telephone Number: (707) 441-5446

	Estimated FY 2007/08 Expenditures and Revenues	Estimated FY 2008/09 Expenditures and Revenues
A. Expenditures		
1. Client, Family Member and Caregiver Support Expenditures		
a. Housing		
b. Other Supports		
2. Personnel Expenditures	\$67,639	\$62,023
3. Operating Expenditures	\$26,685	\$6,838
4. Program Management		
5. Estimated Total Expenditures when service provider is not known		
6. Non-recurring expenditures		
7. Total Proposed Program Budget	\$94,324	\$68,861
B. Revenues		
1. Existing Revenues		
2. New Revenues		
a. Medi-Cal (FFP only)	\$53,455	\$46,980
b. State General Funds	\$53,455	\$46,980
c. Other Revenue		
d. Total New Revenue	\$106,910	\$93,960
3. Total Revenues	\$106,910	\$93,960
C. Total Funding Requirements	-\$12,586	-\$25,099

**FY 2008/09 Mental Health Services Act Community Services and Supports Budget Worksheet-
Approved Workplans**

County: Humboldt Fiscal Year: 2008-09
 Program Workplan #: 6 Date: 9/17/2008
 Program Workplan Name: Alternative Response Team Cross-Branch Program Page 11 of 16
 Type of Funding: 3. Outreach and Engagement Months of Operation: 12
 Proposed Total Client Capacity of Program/Service: 100
 Existing Client Capacity of Program/Service: 47 Prepared by: Melissa Chilton
 Client Capacity of Program/Service Expanded through MHSA: 53 Telephone Number: (707) 441-5446

	Estimated FY 2007/08 Expenditures and Revenues	Estimated FY 2008/09 Expenditures and Revenues
A. Expenditures		
1. Client, Family Member and Caregiver Support Expenditures		
a. Housing		
b. Other Supports		
2. Personnel Expenditures	\$2,984	\$15,506
3. Operating Expenditures	\$1,177	\$1,368
4. Program Management		
5. Estimated Total Expenditures when service provider is not known		
6. Non-recurring expenditures		
7. Total Proposed Program Budget	\$4,161	\$16,873
B. Revenues		
1. Existing Revenues		
2. New Revenues		
a. Medi-Cal (FFP only)		
b. State General Funds		
c. Other Revenue		
d. Total New Revenue	\$0	\$0
3. Total Revenues	\$0	\$0
C. Total Funding Requirements	\$4,161	\$16,873

**FY 2008/09 Mental Health Services Act Community Services and Supports Budget Worksheet-
Approved Workplans**

County: Humboldt Fiscal Year: 2008-09
 Program Workplan # 7 Date: 9/17/2008
 Program Workplan Name Older and Dependent Adults Program Page 12 of 16
 Type of Funding 1. Full Service Partnership Months of Operation 12
 Proposed Total Client Capacity of Program/Service: 234
 Existing Client Capacity of Program/Service: 159 Prepared by: Melissa Chilton
 Client Capacity of Program/Service Expanded through MHSA: 75 Telephone Number: (707) 441-5446

	Estimated FY 2007/08 Expenditures and Revenues	Estimated FY 2008/09 Expenditures and Revenues
A. Expenditures		
1. Client, Family Member and Caregiver Support Expenditures		
a. Housing		
b. Other Supports		
2. Personnel Expenditures	\$74,700	\$88,648
3. Operating Expenditures	\$6,360	\$5,698
4. Program Management		
5. Estimated Total Expenditures when service provider is not known		
6. Non-recurring expenditures		
7. Total Proposed Program Budget	\$81,060	\$94,346
B. Revenues		
1. Existing Revenues		
2. New Revenues		
a. Medi-Cal (FFP only)	\$10,896	\$25,038
b. State General Funds		\$0
c. Other Revenue		
d. Total New Revenue	\$10,896	\$25,038
3. Total Revenues	\$10,896	\$25,038
C. Total Funding Requirements	\$70,164	\$69,308

**FY 2008/09 Mental Health Services Act Community Services and Supports Budget Worksheet-
Approved Workplans**

County: Humboldt

Fiscal Year: 2008-09

Program Workplan # 7

Date: 9/17/2008

Program Workplan Name Older and Dependent Adults Program

Page 13 of 16

Type of Funding 3. Outreach and Engagement

Months of Operation 12

Proposed Total Client Capacity of Program/Service: 110

Existing Client Capacity of Program/Service: 53

Prepared by: Melissa Chilton

Client Capacity of Program/Service Expanded through MHSA: 57

Telephone Number: (707) 441-5446

	Estimated FY 2007/08 Expenditures and Revenues	Estimated FY 2008/09 Expenditures and Revenues
A. Expenditures		
1. Client, Family Member and Caregiver Support Expenditures		
a. Housing		
b. Other Supports		
2. Personnel Expenditures	\$58,166	\$62,250
3. Operating Expenditures	\$4,952	\$144
4. Program Management		
5. Estimated Total Expenditures when service provider is not known		
6. Non-recurring expenditures		
7. Total Proposed Program Budget	\$63,118	\$62,394
B. Revenues		
1. Existing Revenues		
2. New Revenues		
a. Medi-Cal (FFP only)		
b. State General Funds		
c. Other Revenue		
d. Total New Revenue	\$0	\$0
3. Total Revenues	\$0	\$0
C. Total Funding Requirements	\$63,118	\$62,394

**FY 2008/09 Mental Health Services Act Community Services and Supports Budget Worksheet-
Approved Workplans**

County: Humboldt Fiscal Year: 2008-09
 Program Workplan # 8 Date: 9/17/2008
 Program Workplan Name Crisis Intervention Services Expansion Page 14 of 16
 Type of Funding 1. Full Service Partnership Months of Operation 12
 Proposed Total Client Capacity of Program/Service: 64
 Existing Client Capacity of Program/Service: 30 Prepared by: Melissa Chilton
 Client Capacity of Program/Service Expanded through MHSA: 34 Telephone Number: (707) 441-5446

	Estimated FY 2007/08 Expenditures and Revenues	Estimated FY 2008/09 Expenditures and Revenues
A. Expenditures		
1. Client, Family Member and Caregiver Support Expenditures		
a. Housing		
b. Other Supports		
2. Personnel Expenditures	\$88,880	\$161,760
3. Operating Expenditures	\$13,710	\$10,448
4. Program Management		
5. Estimated Total Expenditures when service provider is not known		
6. Non-recurring expenditures		\$3,304
7. Total Proposed Program Budget	\$102,590	\$175,512
B. Revenues		
1. Existing Revenues		
2. New Revenues		
a. Medi-Cal (FFP only)	\$3,145	\$105,264
b. State General Funds		\$0
c. Other Revenue		
d. Total New Revenue	\$3,145	\$105,264
3. Total Revenues	\$3,145	\$105,264
C. Total Funding Requirements	\$99,445	\$70,248

**FY 2008/09 Mental Health Services Act Community Services and Supports Budget Worksheet-
Approved Workplans**

County: Humboldt

Fiscal Year: 2008-09

Program Workplan # 8

Date: 9/17/2008

Program Workplan Name Crisis Intervention Services Expansion

Page 15 of 16

Type of Funding 3. Outreach and Engagement

Months of Operation 12

Proposed Total Client Capacity of Program/Service: 150

Existing Client Capacity of Program/Service: 65

Prepared by: Melissa Chilton

Client Capacity of Program/Service Expanded through MHSA: 85

Telephone Number: (707) 441-5446

	Estimated FY 2007/08 Expenditures and Revenues	Estimated FY 2008/09 Expenditures and Revenues
A. Expenditures		
1. Client, Family Member and Caregiver Support Expenditures		
a. Housing		
b. Other Supports		
2. Personnel Expenditures	\$18,752	\$52,121
3. Operating Expenditures	\$2,892	\$554
4. Program Management		
5. Estimated Total Expenditures when service provider is not known		
6. Non-recurring expenditures		
7. Total Proposed Program Budget	\$21,644	\$52,675
B. Revenues		
1. Existing Revenues		
2. New Revenues		
a. Medi-Cal (FFP only)		
b. State General Funds		
c. Other Revenue		
d. Total New Revenue	\$0	\$0
3. Total Revenues	\$0	\$0
C. Total Funding Requirements	\$21,644	\$52,675

**FY 2008/09 Mental Health Services Act Community Services and Supports Budget Worksheet-
Approved Workplans**

County: Humboldt Fiscal Year: 2008-09
 Program Workplan #: 9 Date: 9/17/2008
 Program Workplan Name: Integrated Program & Planning Support Structures Page 16 of 16
 Type of Funding: 2. System Development Months of Operation: 12
 Proposed Total Client Capacity of Program/Service: 135
 Existing Client Capacity of Program/Service: 55 Prepared by: Melissa Chilton
 Client Capacity of Program/Service Expanded through MHSA: 80 Telephone Number: (707) 441-5446

	Estimated FY 2007/08 Expenditures and Revenues	Estimated FY 2008/09 Expenditures and Revenues
A. Expenditures		
1. Client, Family Member and Caregiver Support Expenditures		
a. Housing		
b. Other Supports		
2. Personnel Expenditures	\$205,006	\$201,578
3. Operating Expenditures	\$22,975	\$40,150
4. Program Management		
5. Estimated Total Expenditures when service provider is not known		
6. Non-recurring expenditures		
7. Total Proposed Program Budget	\$227,981	\$241,728
B. Revenues		
1. Existing Revenues		
2. New Revenues		
a. Medi-Cal (FFP only)		
b. State General Funds		
c. Other Revenue		
d. Total New Revenue	\$0	\$0
3. Total Revenues	\$0	\$0
C. Total Funding Requirements	\$227,981	\$241,728

Public Comment

There was a 30-day Public Comment period from October 18th through November 17th, 2008. Copies of the MHSA 08/09 Plan were made available to all stakeholders through the following methods:

- Electronic format: the Humboldt County Department of Health and Human Services, Mental Health Branch, Mental Health Services Act website: <http://co.humboldt.ca.us/hhs/mh/mhsa.asp> (Attachment A)
- Print format: Humboldt County Department of Health and Human Services (DHHS) Professional Building, 507 F Street, Eureka Ca, 95501; DHHS Mental Health Branch, 720 Wood Street, Eureka Ca, 95501; DHHS Children Youth and Family Services 1711 3rd Street Eureka Ca, 95501; and The Hope Center 2933 H Street Eureka Ca, 95501
- Flyers were mailed to over 30 locations around the county, including public libraries, health care clinics, tribes, and senior centers
- Flyers were e-mailed to recipients on more than 10 local e-mail distribution lists including family/community resource centers, organizational providers, and Latino Net
- Plans were e-mailed or mailed to all persons who requested a copy
- An informational flyer was sent to stakeholders regarding the Plan's availability, including where to obtain it, and where to make comments. (Attachment B)
- Advertisements were placed in the local newspaper Oct. 25, Nov. 8 and Nov. 15, with the Plan's availability, including where to obtain it, and where to make comments. (Attachment C)
- The Mental Health Branch Director and the MHSA Coordinator announced to DHHS staff, community-based organizations and partner agencies in various meetings the Plan's availability including where to obtain it, and where to make comments.

During the public review period, comments from stakeholders were received in a variety of ways, including e-mail, public input meetings, comment boxes, phone calls, and at the public hearing.

The MHSA 08/09 Plan Update comment period occurred simultaneously with the MHSA PEI Plan. Although the comments received did not require a substantive change to this Plan they are relevant and important to services provided in the community. All comments were carefully documented and used to inform planning and implementation of programs and activities throughout the Humboldt County DHHS.

Attachment A



County of Humboldt Department of Health & Human Services

Mental Health Branch

Karolyn Stein, RN, Branch Director



Mental Health Services Act (MHSA)

About The Mental Health Services Act

The Mental Health Services Act (MHSA) provides funding to counties to expand and develop innovative and integrated mental health services for children, youth, adults, and older adults. California voters passed Prop 63 in November 2004 as the result of a grassroots coalition intending to transform public mental health care.

The intent of this website is to inform and invite you to participate in the implementation of the MHSA.

- [Full text of the Mental Health Services Act](#)
- [Acta de Servicios de Salud Mental](#)

The Mental Health Services Act addresses a broad continuum of prevention, early intervention, and service needs.

- **Older / Dependent Adult Services** provides co-located, integrated mental health services by a clinician, with the Adult Protective Services (APS) and In-Home Supportive Services (IHSS) Program.
- **Crisis Intervention Services (CIS)** provides the coordination of crisis intervention services in partnership with law enforcement.
- The **Alternative Response Team (ART)** is an innovative, multi-agency program aimed at those at-risk families that would benefit from early intervention and services.
- **Comprehensive Community Treatment (CCT)** is a team treatment approach designed to provide comprehensive, community-based psychiatric treatment, rehabilitation, and support to persons with serious and persistent mental illness.
- **Hope Center** is a client and family member center, that provides peer-to-peer education, support, prevention services, wellness activities, and system navigation. To contact the Hope Center, call **(707) 441-3723**.
- **Rural Outreach Services Enterprise (ROSE)** provides Mental Health, Alcohol and Other Drug, Social Services, and Public Health mobile outreach services to outlying communities.
- **Telemedicine services** provide medication support to outlying areas.
- **Support to Transitional Age Youth (TAY) Organizations.**
- **The Mental Health Liaison** works with families and individuals in the community who have mental health questions, concerns, or need support.



"Maggie and Jane"
Maggie had found a
home
~ Louise Hope ~

Public Comment! Participate! Be informed!

Mental Health Services Act Plans and Updates are available for a 30-day comment period before they are submitted to the State Department of Mental Health. When a Plan or Update is available for Public Comment it will be located in the **MHSA Documents Open for Public Comment** section.

MHSA Plans or Updates may be obtained in several ways:

- Click on the name of the document below to view or print.
- Click on document below to view and on the last page will be listed the locations hard copies are available during the 30-day Comment Period.
- E-mail or call with your mailing address or email address and request the document.

Submitting a Public Comment during the 30-day Comment Period may be done in several ways:

Click on the document below to view it and on the last page of the document will be listed the locations "MHSA Comment Boxes" are available during the 30-day Comment Period.

- Email: mhsacomment@co.humboldt.ca.us
- Comment line phone number: **(707) 441-3770**
- Toll Free number: **(866) 320-8911**

MHSA Documents Open for Public Comment!

- [MHSA Prevention and Early Intervention Plan](#)
 - [Attachment A: Suicide in Humboldt County 2003-2007](#)
 - [Attachment B: Humboldt County Strategic Prevention Plan](#)
 - [Attachment C: Recommendation Submitted by Advisory groups to MHSA Steering Committee](#)
 - [Attachment D: Integrated Services Initiative 2007-2010 Strategic Plan](#)
 - [Attachment E: California Strategic on Suicide Prevention: Every Californian is part of the Solution](#)
 - [Attachment F: Eliminating Stigma and Discrimination Against Persons with Mental Health Disabilities. A Project of the Mental Health Services Act](#)
 - [Attachment G: Early Intervention for Transitional Age Populations](#)
- [MHSA Prevention and Early Intervention Assignment Letter](#)
- [MHSA Community Services and Supports Fiscal Year 2008-2009 Update](#)

Previous MHSA Documents

2008

- [MHSA Housing Assignment Letter](#)

2007

- [Community Services and Supports Implementation Progress Report](#)
- [Community Services and Supports FY05/06 Remaining Funds Plan](#)
- [Community Services and Supports One-Time Augmentation Plan](#)
- [Community Services and Supports Expansion Plan](#)

2006

- [Community Services and Supports Implementation Progress Report](#)

2005

- [Community Services and Supports Plan](#)
- [Executive Summary Community Services and Supports Plan](#)
- [Framework for Community Input](#)
- [MHSA Advisory Group Recommendations](#)

Site Links

- [Comprehensive Community Treatment Program](#)
- [Crisis Intervention Services](#)
- [Mental Health Liaison](#)

Web Links

- [California Department of Mental Health \(MHSA\)](#)
- [California Network of Mental Health Clients \(CNMHC\)](#)
- [National Alliance for the Mentally Ill \(NAMI\)](#)

Attachment B



COUNTY OF HUMBOLDT
DEPARTMENT OF HEALTH AND HUMAN SERVICES

PHILLIP R. CRANDALL, DIRECTOR

MENTAL HEALTH BRANCH
720 Wood Street Eureka, CA 95501-4482
(707) 268-2900 Fax: (707) 476-4049

Administration
(707) 268-2990

Children, Youth & Family Service
(707) 268-2800

Adult/24 Hour Services
(707) 268-2900

Alcohol & Other Drug Programs
(707) 476-4054

October 15, 2008

To whom it may concern,

Humboldt County Department of Health and Human Services is committed to stakeholder participation in the development of Mental Health Services Act programs.

The Mental Health Services Act, legislation passed in 2004, provides funding to counties to expand and develop innovative and integrated mental health services.

Currently there are Humboldt County Mental Health Services Act documents available for Public Comment from October 18th through November 17th, 2008.

There will also be a Public Hearing on November 17th, 2008 from 5:30-6:30pm at the Department of Health and Human Services Professional Building at 507 F Street in Eureka.

Enclosed please find a flyer that contains information on where to access these documents and how to make comments.

If possible and appropriate please make these materials available to your staff and the people you serve. Also, please remove the materials after the Public Comment period ends on November 17th, 2008.

Please contact us with any questions you may have.

Thank you in advance for your help in this effort,

Jacyln Culleton
Administrative Analyst
Mental Health Services Act
Humboldt County Mental Health Branch
720 Wood Street, Eureka, CA 95501
Phone: 707 268-2923
Email: jculleton@co.humboldt.ca.us

Culleton, Jaclyn

From: Culleton, Jaclyn
Sent: Friday, October 17, 2008 11:47 AM
To: Culleton, Jaclyn
Subject: MHSA PEI Public Comment and Hearing
Attachments: PEI Public Comment-Hearing flyer.pdf

Hello,

Please forward to interested parties!

The Mental Health Services Act

- Prevention and Early Intervention Plan
- Assignment Letter
- Community Services and Supports FY 2008-09 Update

Are open for

Public Comment

October 18 - November 17

Public Hearing

November 17

5:30 to 6:30pm

Humboldt County Department of Health and Human Services
Professional Building
507 F Street in Eureka

Documents are available and comments may be placed in the "MHSA Comment Box"

- DHHS Professional Building
507 F Street, Eureka
- DHHS Mental Health Branch
720 Wood Street, Eureka
- DHHS Children Youth and Family Services
1711 3rd Street, Eureka
- Hope Center
2933 H Street, Eureka

- website: <http://co.humboldt.ca.us/HHS/MHB/MHSA/>

To request documents be sent to you or to make a comment please contact us at:

Phone: (707) 441-3770

Toll free: (866) 320-8911

Email: mhsacomments@co.humboldt.ca.us

Address: Department of Health and Human Services, Mental Health Branch
Attn: Jaclyn Culleton
720 Wood Street
Eureka, Ca 95501

Thanks,
~jaclyn

Jaclyn Culleton
Administrative Analyst
Mental Health Services Act
Humboldt County Mental Health
Phone: 707 268-2923
Fax: 707 476-4049



Humboldt County Department of Health and Human Services
Mental Health Services Act

Provides funding to expand and develop innovative and integrated mental health services

What do you think?

Public Comment
October 18 - November 17

Prevention and Early Intervention Plan, Assignment Letter, and the Community Services and Supports Fiscal Year 2008-09 Update.

Documents are available and comments may be placed in the
"MHSA Comment Box"

- Humboldt County DHHS Professional Building:
507 F Street, Eureka
- Humboldt County DHHS Mental Health Branch:
720 Wood Street, Eureka
- Humboldt County DHHS Mental Health Branch
Children Youth and Family Services:
1711 3rd Street, Eureka
- Hope Center: 2933 H Street, Eureka
- website: <http://co.humboldt.ca.us/HHS/MHB/MHSA/>

Public Hearing on November 17

Humboldt County Department of Health and Human Services Professional Building
507 F Street in Eureka from **5:30 to 6:30pm**

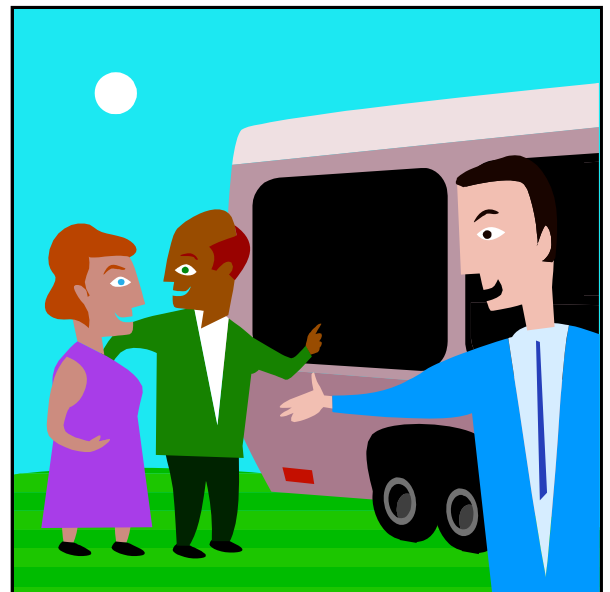
To request documents be sent to you or to make
a comment please contact us at:

Phone: (707) 441-3770

Toll free: (866) 320-8911

Email: mhsacomments@co.humboldt.ca.us

Address: Department of Health and Human
Services, Mental Health Branch
Attn: Jaclyn Culleton
720 Wood Street
Eureka, Ca 95501



Attachment C



Humboldt County Department of Health and Human Services
Mental Health Services Act
Provides funding to expand and develop innovative and integrated mental health services

What do you think?

Public Comment
October 18 - November 17
 Prevention and Early Intervention Plan, Assignment Letter, and the Community Services and Supports Fiscal Year 2008-09 Update.
 Documents are available and comments may be placed in the
"MHSA Comment Box"

- Humboldt County DHHS Professional Building:
507 F Street, Eureka
- Humboldt County DHHS Mental Health Branch:
720 Wood Street, Eureka
- Humboldt County DHHS Mental Health Branch
Children Youth and Family Services:
1711 3rd Street, Eureka
- Hope Center: 2933 H Street, Eureka
- website: <http://co.humboldt.ca.us/HHS/MHB/MHSA/>

Public Hearing on November 17
 Humboldt County Department of Health and Human Services Professional Building
 507 F Street in Eureka from **5:30 to 6:30pm**

To request documents be sent to you or to make a comment please contact us at:

Phone: (707) 441-3770
Toll free: (866) 320-8911
Email: mhsacomments@co.humboldt.ca.us
Address: Department of Health and Human Services, Mental Health Branch
 Attn: Jaclyn Culleton
 720 Wood Street
 Eureka, Ca 95501



Times Standard 11/8/08 page A3